

Datasheet for ABIN499527
anti-CADPS2 antibody (Center)[Go to Product page](#)

2 Images

Overview

Quantity:	0.1 mg
Target:	CADPS2
Binding Specificity:	Center
Reactivity:	Human, Rat, Mouse
Host:	Rabbit
Clonality:	Polyclonal
Conjugate:	This CADPS2 antibody is un-conjugated
Application:	Western Blotting (WB), Immunohistochemistry (Paraffin-embedded Sections) (IHC (p)), Enzyme Immunoassay (EIA)

Product Details

Immunogen:	CAPS2 antibody was raised against a 19 amino acid peptide near the center of the human CAPS2.
Isotype:	IgG
Specificity:	This antibody reacts to CAPS2.
Purification:	Affinity chromatography purified via peptide column

Target Details

Target:	CADPS2
Alternative Name:	CADPS2 / CAPS2 (CADPS2 Products)

Target Details

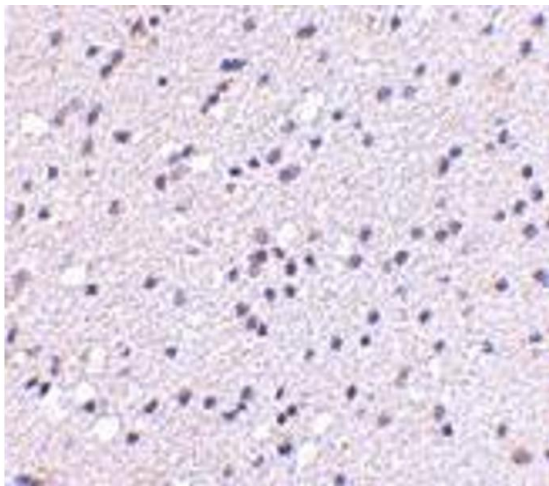
Background:	CAPS2 and the related protein CAPS1 encode novel neural/endocrine-specific cytosolic and peripheral membrane proteins. Both are essential components of the synaptic vesicle priming machinery and are required for the Ca ²⁺ -regulated exocytosis of secretory vesicles, CAPS-deficient neurons contain no or very few fusion competent synaptic vesicles, causing a selective impairment of fast phasic transmitter release. Like CAPS1, numerous isoforms of CAPS2 are known to exist. These isoforms show distinct expression patterns in the brain. For example, CAPS2b showed high expression in the developing cerebellum. Furthermore, one version of CAPS2 mRNA that lacks exon 3 is detected in some autistic patients, suggesting that the differential expression pattern of CAPS2 is involved in neuronal development. This CAPS2 antibody is predicted to be specific to CAPS2 and not recognize CAPS1. Synonyms: Calcium-dependent activator protein for secretion 2, Calcium-dependent secretion activator 2, KIAA1591
Gene ID:	93664
NCBI Accession:	NP_060424
UniProt:	Q86UW7
Pathways:	Synaptic Vesicle Exocytosis

Application Details

Application Notes:	ELISA. Western Blot: CAPS2 antibody can be used for detection of CAPS2 at 0.5 - 1 µg/mL. Immunohistochemistry. Other applications not tested. Optimal dilutions are dependent on conditions and should be determined by the user.
Restrictions:	For Research Use only

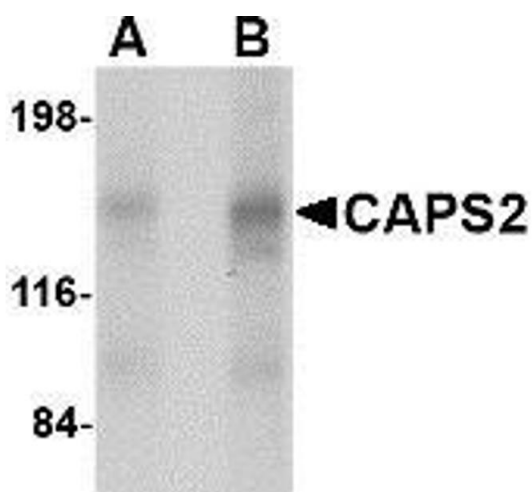
Handling

Buffer:	PBS containing 0.02 % sodium azide.
Preservative:	Sodium azide
Precaution of Use:	This product contains sodium azide: a POISONOUS AND HAZARDOUS SUBSTANCE which should be handled by trained staff only.
Storage:	4 °C
Storage Comment:	Store the antibody undiluted at 2-8 °C.



Immunohistochemistry (Paraffin-embedded Sections)

Image 1. Immunohistochemistry of CAPS2 in human brain with CAPS2 antibody at 5 µg/ml.



Western Blotting

Image 2. Western blot analysis of CAPS2 in human brain tissue lysate with CAPS2 antibody at (A) 0.5 and (B) 1 µg/ml.