



[Go to Product page](#)

Datasheet for ABIN499533  
**anti-CARD10 antibody**

2 Images

### Overview

Quantity:	0.1 mg
Target:	CARD10
Reactivity:	Human, Mouse
Host:	Rabbit
Clonality:	Polyclonal
Conjugate:	This CARD10 antibody is un-conjugated
Application:	Western Blotting (WB), Immunofluorescence (IF), Enzyme Immunoassay (EIA)

### Product Details

Immunogen:	Murine CARD10 / Caspase recruitment domain family 10 / CARMA3 / Bimp1 Peptide
Isotype:	IgG
Specificity:	CARD10 antibody was raised against a synthetic peptide corresponding to 14 amino acids at the C-terminus of human CARD10.
Purification:	Immunoaffinity

### Target Details

Target:	CARD10
Alternative Name:	CARD10 / CARMA3 ( <a href="#">CARD10 Products</a> )
Background:	Apoptosis is related to many diseases and development. Cell death signals are transduced by death domain (DD), death effector domain (DED), and caspase recruitment domain (CARD) containing molecules. CARD containing proteins include some caspases, Apaf-1, CARD4, IAPs,

## Target Details

---

RICK, ARC, RAIDD, Bcl-10, and ASC. A novel CARD-containing protein was recently identified and designated CARD10 (1). This protein belongs to the membrane-associated guanylate kinase-like (MAGUK) family of proteins that can function as molecular scaffolds that assist assembly of signal transduction molecules (2). CARD 10 interacts with Bcl-10, a Bcl protein that promotes apoptosis, caspase-9 maturation and activation of NF-kappaB (1,3). CARD 10 and the related protein CARMA1 also associate with NEMO, the regulatory subunit of the IkappaK complex (4), demonstrating its importance in the regulation of NF-kappaB transcription factor activation. Synonyms: CARD-containing MAGUK protein 3, Caspase recruitment domain-containing protein 10

---

Gene ID: 29775

---

UniProt: [F1BA47](#)

---

Pathways: [S100 Proteins](#)

## Application Details

---

Application Notes: ELISA. Western BLot: CARD10 antibody can be used for detection of CARD10 at 5 - 10 µg/mL. Immunocytochemistry. Other applications not tested. Optimal dilutions are dependent on conditions and should be determined by the user.

---

Restrictions: For Research Use only

## Handling

---

Buffer: PBS containing 0.02 % sodium azide.

---

Preservative: Sodium azide

---

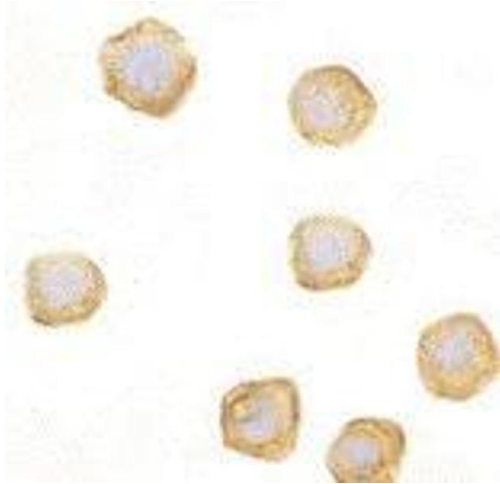
Precaution of Use: This product contains sodium azide: a POISONOUS AND HAZARDOUS SUBSTANCE which should be handled by trained staff only.

---

Storage: 4 °C

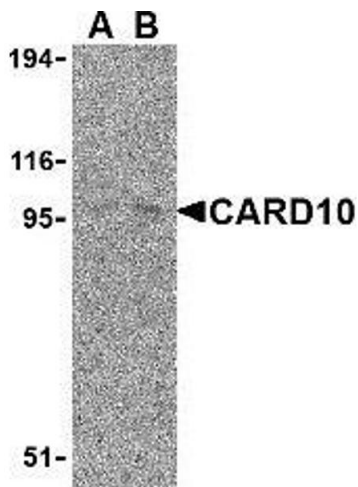
---

Storage Comment: Store the antibody undiluted at 2-8 °C.



### Immunofluorescence

**Image 1.** Immunocytochemistry of CARD10 in EL4 cells with AP30183PU-N CARD10 antibody at 10 µg/ml.



### Western Blotting

**Image 2.** Western blot analysis of CARD10 expression in EL4 cell lysate with AP30183PU-N CARD10 antibody at (A) 5 and (B) 10 µg /ml.