



[Go to Product page](#)

Datasheet for ABIN499535

anti-CARD8 antibody

2 Images

Overview

Quantity:	0.1 mg
Target:	CARD8
Reactivity:	Human
Host:	Rabbit
Clonality:	Polyclonal
Conjugate:	This CARD8 antibody is un-conjugated
Application:	Western Blotting (WB), Immunofluorescence (IF), Enzyme Immunoassay (EIA)

Product Details

Immunogen:	Human CARD8 / Cardinal / TUCAN Peptide
Isotype:	IgG
Specificity:	CARD8 antibody was raised against a synthetic peptide corresponding to amino acids at the C-terminus of human CARD8.
Purification:	Affinity chromatography purified via peptide column

Target Details

Target:	CARD8
Alternative Name:	CARD8 / NDPP1 (CARD8 Products)
Background:	Apoptosis is related to many diseases and development. Cell death signals are transduced by death domain (DD), death effector domain (DED), and caspase recruitment domain (CARD) containing molecules. CARD containing proteins include some caspases, Apaf-1, CARD4, IAPs,

Target Details

RICK, ARC, RAIDD, BCL-10, and ASC. A novel CARD-containing protein was recently identified and designated CARD8. This protein interacts with DRAL, a p53-responsive protein implicated in the induction of apoptosis (1,2), and caspase-1 and its related proteins ICEBERG and pseudo-ICE (3). Although there are conflicting reports on whether CARD8 acts a pro- or anti-apoptotic protein (2,4), it has been suggested that it functions as an adaptor molecule regulating caspase-1 and NF-kappaB activation. Synonyms: Apoptotic protein NDPP-1, CARD-inhibitor of NF-kappa-B-activating ligand, CARDINAL, Caspase recruitment domain-containing protein 8, DACAR, KIAA0955, TUCAN, Tumor up-regulated CARD-containing antagonist of CASP9

Gene ID: 22900

UniProt: [Q9Y2G2](#)

Pathways: [Positive Regulation of Endopeptidase Activity](#)

Application Details

Application Notes: ELISA. Immunocytochemistry. Western Blot: CARD8 antibody can be used for detection of CARD8 at 2 µg/mL. K562 cell lysate can be used as Positive Control and a band at approximately 45 kDa can be detected.
Other applications not tested.
Optimal dilutions are dependent on conditions and should be determined by the user.

Restrictions: For Research Use only

Handling

Concentration: 1.0 mg/mL

Buffer: PBS containing 0.02 % sodium azide.

Preservative: Sodium azide

Precaution of Use: This product contains sodium azide: a POISONOUS AND HAZARDOUS SUBSTANCE which should be handled by trained staff only.

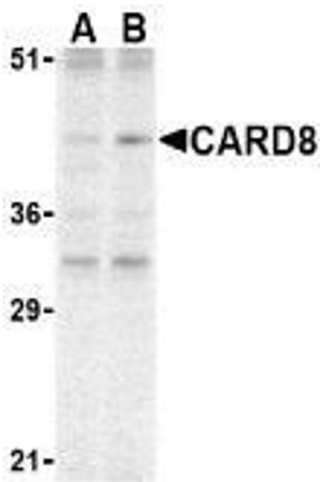
Storage: 4 °C

Storage Comment: Store the antibody undiluted at 2-8 °C.



Immunofluorescence

Image 1. Immunocytochemistry of CARD8 in K562 cells with AP30184PU-N CARD8 antibody at 10 µg/ml.



Western Blotting

Image 2. Western blot analysis of CARD8 expression in K562 cell lysate with AP30184PU-N CARD8 antibody at (A) 2 and (B) 4 µg /ml.