

Datasheet for ABIN499537

anti-CARD9 antibody**2** Images[Go to Product page](#)

Overview

Quantity:	0.1 mg
Target:	CARD9
Reactivity:	Human
Host:	Rabbit
Clonality:	Polyclonal
Conjugate:	This CARD9 antibody is un-conjugated
Application:	Western Blotting (WB), Immunofluorescence (IF), Enzyme Immunoassay (EIA)

Product Details

Immunogen:	Human CARD9 Peptide
Isotype:	IgG
Specificity:	CARD9 antibody was raised against a synthetic peptide corresponding to amino acids 521 to 536 of human CARD9. The sequence is different from that of rat origin by two amino acids.
Purification:	Affinity chromatography purified via peptide column

Target Details

Target:	CARD9
Alternative Name:	CARD9 (CARD9 Products)
Background:	Apoptosis is related to many diseases and development. Cell death signals are transduced by death domain (DD), death effector domain (DED), and caspase recruitment domain (CARD) containing molecules. CARD containing proteins include some caspases, Apaf-1, CARD4, IAPs,

Target Details

RICK, ARC, RAIDD, BCL-10, and ASC. A novel CARD-containing protein was recently identified and designated CARD9, which interacts with the CARD activation domain of BCL-10 (1). CARD9 associates with BCL-10 and forms a complex within cells. CARD9 induces apoptosis and activates NF-kappaB. CARD9 is an upstream activator of BCL-10 and NF-kappaB signaling. Synonyms: Caspase recruitment domain-containing protein 9

Gene ID: 64170

NCBI Accession: [NP_434700](#)

UniProt: [Q9H257](#)

Pathways: [Activation of Innate immune Response](#)

Application Details

Application Notes: ELISA. Western Blot: CARD9 antibody can be used for detection of CARD9 at 0.5 to 1 µg/mL. A band at approximately 59 kDa can be detected. Immunocytochemistry.
Other applications not tested.
Optimal dilutions are dependent on conditions and should be determined by the user.

Restrictions: For Research Use only

Handling

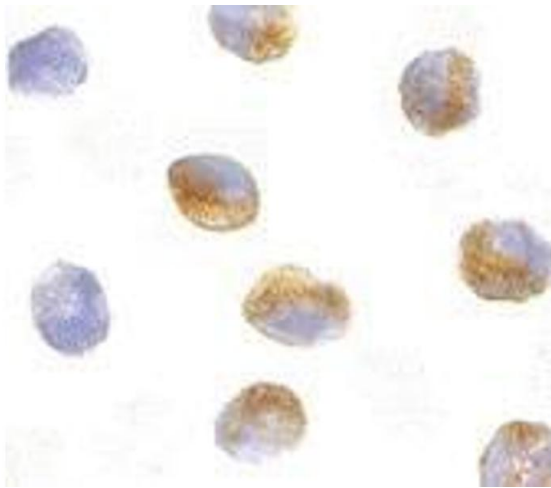
Buffer: PBS containing 0.02 % sodium azide.

Preservative: Sodium azide

Precaution of Use: This product contains sodium azide: a POISONOUS AND HAZARDOUS SUBSTANCE which should be handled by trained staff only.

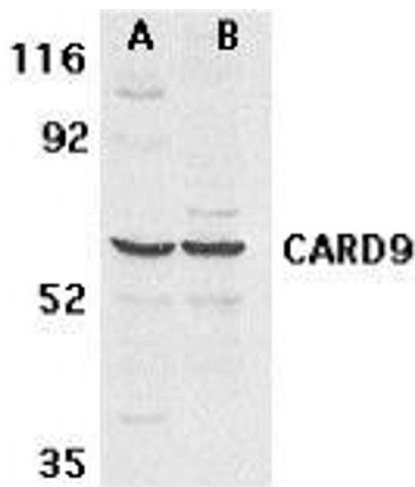
Storage: 4 °C

Storage Comment: Store the antibody undiluted at 2-8 °C.



Immunofluorescence

Image 1. Immunocytochemistry of CARD9 in K562 cells with AP30185PU-N CARD9 antibody at 10 µg/ml.



Western Blotting

Image 2. Western blot analysis of CARD9 expression in human MDA-MB-361 (A) and PC-3 (B) cell lysate with AP30185PU-N CARD9 antibody at 2.5 µg /ml.