

Datasheet for ABIN499539

anti-CARD11 antibody**2** Images[Go to Product page](#)

Overview

Quantity:	0.1 mg
Target:	CARD11
Reactivity:	Human, Mouse
Host:	Rabbit
Clonality:	Polyclonal
Conjugate:	This CARD11 antibody is un-conjugated
Application:	Western Blotting (WB), Immunohistochemistry (Paraffin-embedded Sections) (IHC (p)), Enzyme Immunoassay (EIA)

Product Details

Immunogen:	Human CARMA1 Peptide
Isotype:	IgG
Specificity:	CARMA1 antibody was raised against a synthetic peptide corresponding to amino acids at the C-terminus of human CARMA1.
Purification:	Affinity chromatography purified via peptide column

Target Details

Target:	CARD11
Alternative Name:	CARD11 / CARMA1 (CARD11 Products)
Background:	CARMA proteins belong to the membrane-associated guan-ylate kinase-like (MAGUK) family of proteins that can function as molecular scaffolds that assist assembly of signal transduction

Target Details

molecules (1). CARMA1, CARMA2, and CARMA3 share high degrees of sequence and functional homology, but their tissue-specific distribution suggests that they serve distinct biological functions in different cell types (2-4). Both CARMA1 and CARMA3 associate with NEMO, the regulatory subunit of the I κ B complex, thereby regulating activation of the NF- κ B transcription factor (5). Also, gene inactivation studies showed a complete block in T and B cell immunity as well as an impaired response to LPS, indicating that CARMA1 is a critical regulator in both the adaptive and innate immune systems (6). Synonyms: CARD-containing MAGUK protein 3, Caspase recruitment domain-containing protein 11

Gene ID: 84433

UniProt: [Q9BXL7](#)

Pathways: [TCR Signaling](#), [Fc-epsilon Receptor Signaling Pathway](#), [BCR Signaling](#)

Application Details

Application Notes: ELISA. Western Blot: CARMA1 antibody can be used for detection of CARMA1 at 0.5 to 2 μ g/mL. Aband at approximately 125 kDa can be detected. Immunohistochemistry.
Other applications not tested.
Optimal dilutions are dependent on conditions and should be determined by the user.

Restrictions: For Research Use only

Handling

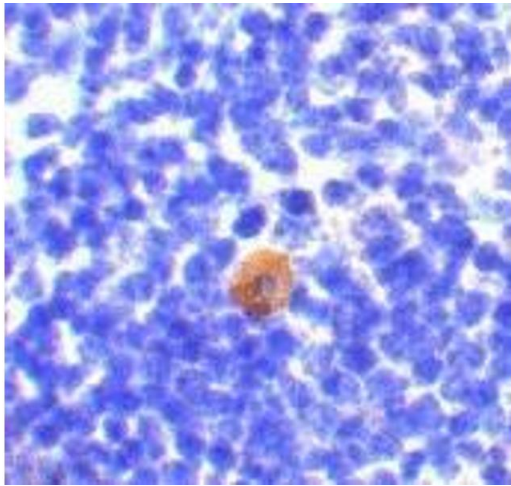
Buffer: PBS containing 0.02 % sodium azide.

Preservative: Sodium azide

Precaution of Use: This product contains sodium azide: a POISONOUS AND HAZARDOUS SUBSTANCE which should be handled by trained staff only.

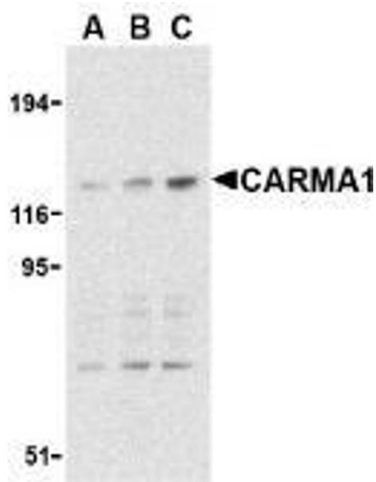
Storage: 4 °C

Storage Comment: Store the antibody undiluted at 2-8 °C.



Immunohistochemistry (Paraffin-embedded Sections)

Image 1. Immunohistochemistry of CARMA1 in mouse thymus with CARMA1 antibody at 10 µg/ml.



Western Blotting

Image 2. Western blot analysis of CARMA1 expression in mouse thymus cell lysate with AP30186PU-N CARMA1 antibody at 0.5 (lane A), 1 (lane B), and 2 µg /ml (lane C), respectively.