

Datasheet for ABIN499593

anti-CCDC69 antibody (N-Term)



[Go to Product page](#)

1 Image

Overview

| | |
|----------------------|---|
| Quantity: | 0.1 mg |
| Target: | CCDC69 |
| Binding Specificity: | N-Term |
| Reactivity: | Human, Mouse, Rat |
| Host: | Chicken |
| Clonality: | Polyclonal |
| Conjugate: | This CCDC69 antibody is un-conjugated |
| Application: | Western Blotting (WB), Enzyme Immunoassay (EIA) |

Product Details

| | |
|---------------|---|
| Immunogen: | CCDC69 antibody was raised against a 16 amino acid peptide near the amino terminus of human CCDC69. |
| Isotype: | IgG |
| Purification: | Affinity chromatography purified via peptide column |

Target Details

| | |
|-------------------|--|
| Target: | CCDC69 |
| Alternative Name: | CCDC69 (CCDC69 Products) |
| Background: | The coiled-coil domain is a common protein motif that is often involved in protein oligomerization and is found in proteins such as transcription factors and intermediate filaments. The CCDC47 gene maps to chromosome 5 at 5q33.1. Little is known about this |

Target Details

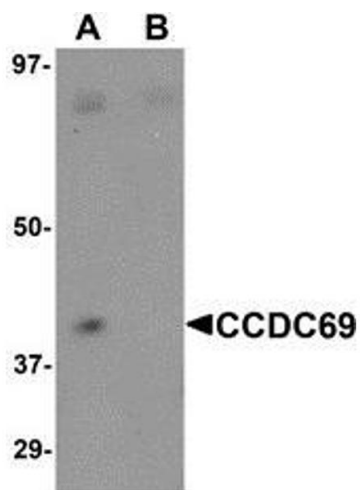
| | |
|-----------------|--|
| | protein.Synonyms: Coiled-coil domain-containing protein 69 |
| Gene ID: | 26112 |
| NCBI Accession: | NP_056436 |
| UniProt: | A6NI79 |

Application Details

| | |
|--------------------|---|
| Application Notes: | ELISA. Western Blot: CCDC69 antibody can be used for detection of CCDC69 at 1 - 2 µg/mL. Other applications not tested. Optimal dilutions are dependent on conditions and should be determined by the user. |
| Restrictions: | For Research Use only |

Handling

| | |
|--------------------|--|
| Concentration: | 1.0 mg/mL |
| Buffer: | PBS containing 0.02 % sodium azide. |
| Preservative: | Sodium azide |
| Precaution of Use: | This product contains sodium azide: a POISONOUS AND HAZARDOUS SUBSTANCE which should be handled by trained staff only. |
| Handling Advice: | Avoid repeated freezing and thawing. |
| Storage: | -20 °C |
| Storage Comment: | Store the antibody (in aliquots) at -20 °C. |



Western Blotting

Image 1. Western blot analysis of CCDC69 in mouse lung tissue lysate with AP30213PU-N CCDC69 antibody at 1 μ g/ml in (A) the absence and (B) the presence of blocking peptide.