

Datasheet for ABIN499597
anti-CCR3 antibody (C-Term)

2 Images



[Go to Product page](#)

Overview

Quantity:	0.1 mg
Target:	CCR3
Binding Specificity:	C-Term
Reactivity:	Human, Mouse, Rat
Host:	Rabbit
Clonality:	Polyclonal
Conjugate:	This CCR3 antibody is un-conjugated
Application:	Western Blotting (WB), Immunohistochemistry (Paraffin-embedded Sections) (IHC (p)), Enzyme Immunoassay (EIA)

Product Details

Immunogen:	Human CCR3 (C-Terminus) Peptide
Isotype:	IgG
Specificity:	CCR3 antibody was raised against a 14 amino acid peptide from near the carboxy terminus of human CCR3.
Purification:	Immunoaffinity

Target Details

Target:	CCR3
Alternative Name:	CD193 / CCR3 (CCR3 Products)

Target Details

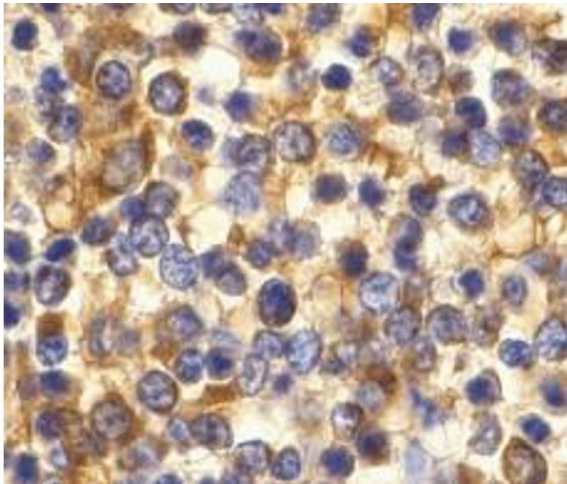
Background:	Human immunodeficiency virus (HIV) and related virus require coreceptors to infect target cells. Some G protein-coupled receptors including CCR5, CXCR4, CCR3, CCR2b, CCR8, GPR15, STRL33, and CX3CR1 in the chemokine receptor family were recently identified as HIV coreceptors. CCR5, CXCR4 and CCR3 are the principal receptors for HIV fusion and entry of target cells. CCR3 facilitates infection by a subset of virus. CCR3 and CCR5 promote efficient infection of microglia, the major target cells in the CNS (3,4). High levels of CCR3 and CXCR4 expression were found on the neurons from both the central and peripheral nervous systems. The CCR3 ligand, eotaxin, and an anti-CCR3 antibody inhibited HIV infection of microglia. These results indicate CCR3 plays an important role in HIV infection of CNS.Synonyms: C-C CKR-3, C-C chemokine receptor type 3, CC-CKR-3, CCR-3, CKR3, CMKBR3, Eosinophil eotaxin receptor
Gene ID:	1232
NCBI Accession:	NP_847899
UniProt:	P51677

Application Details

Application Notes:	ELISA. Western Blot: CCR3 antibody can be used for the detection of CCR3 at 1 - 2 µg/mL. Immunohistochemistry. Other applications not tested. Optimal dilutions are dependent on conditions and should be determined by the user.
Restrictions:	For Research Use only

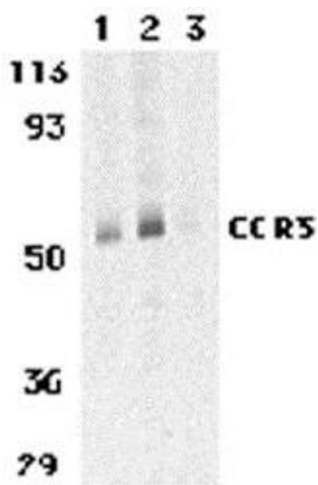
Handling

Buffer:	PBS containing 0.02 % sodium azide.
Preservative:	Sodium azide
Precaution of Use:	This product contains sodium azide: a POISONOUS AND HAZARDOUS SUBSTANCE which should be handled by trained staff only.
Storage:	4 °C
Storage Comment:	Store the antibody undiluted at 2-8 °C.



Immunohistochemistry (Paraffin-embedded Sections)

Image 1. Immunohistochemistry of CCR3 in human spleen tissue with CCR3 antibody at 10 µg/ml.



Western Blotting

Image 2. Western blot analysis of CCR3 in human spleen tissue lysates with AP30215PU-N CCR3 antibody at 1 (lane 1) and 2 µg/ml (lane 2), and 2 µg/ml in the presence of blocking peptide (lane 3).