

Datasheet for ABIN499603
anti-CDCA8 antibody (N-Term)

2 Images

[Go to Product page](#)

Overview

Quantity:	0.1 mg
Target:	CDCA8
Binding Specificity:	N-Term
Reactivity:	Human, Mouse, Rat
Host:	Rabbit
Clonality:	Polyclonal
Conjugate:	This CDCA8 antibody is un-conjugated
Application:	Western Blotting (WB), Immunofluorescence (IF), Enzyme Immunoassay (EIA)

Product Details

Immunogen:	CDCA8 antibody was raised against a 19 amino acid peptide near the amino terminus of the human CDCA8.
Isotype:	IgG
Specificity:	This antibody reacts to CDCA8.
Purification:	Affinity chromatography purified via peptide column

Target Details

Target:	CDCA8
Alternative Name:	CDCA8 / Borealin (CDCA8 Products)
Background:	CDCA8 is a component of a chromosomal passenger complex (CPC) required for stability of

Target Details

the bipolar mitotic spindle. The chromosomal passenger complex, which includes Survivin, CDCA8, INCENP and Aurora-B, is known to play crucial roles during mitosis and cell division. It was found that CDCA8 interacting with Aurora-B, INCENP and Survivin, increases during G2/M phase and then reduces after exit from M phase. CDCA8 is cell cycle regulated, down-regulated in response to p53/Rb-signaling, and up-regulated in many types of cancerous tissues. In Drosophila cells, inactivation of CDCA8 results in polyploidy, delayed mitosis and abnormal tissue development, indicating its critical role for cell proliferation. Recent studies show that CDCA8 is essential for cell proliferation during early embryonic development, and its early embryonic lethality cannot be rescued by the loss of p53. Its aberrant expression is linked to a poor prognosis for gastric cancer. Synonyms: Cell division cycle-associated protein 8, Dasra-B, PESCRG3, Pluripotent embryonic stem cell-related gene 3 protein, hDasra-B

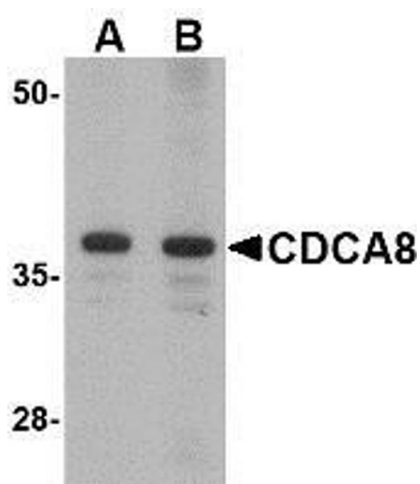
Gene ID:	55143
NCBI Accession:	NP_060571
UniProt:	Q53HL2
Pathways:	Cell Division Cycle, M Phase

Application Details

Application Notes:	ELISA. Western Blot: CDCA8 antibody can be used for detection of CDCA8 at 1 µg/mL. Immunofluorescence. Other applications not tested. Optimal dilutions are dependent on conditions and should be determined by the user.
Restrictions:	For Research Use only

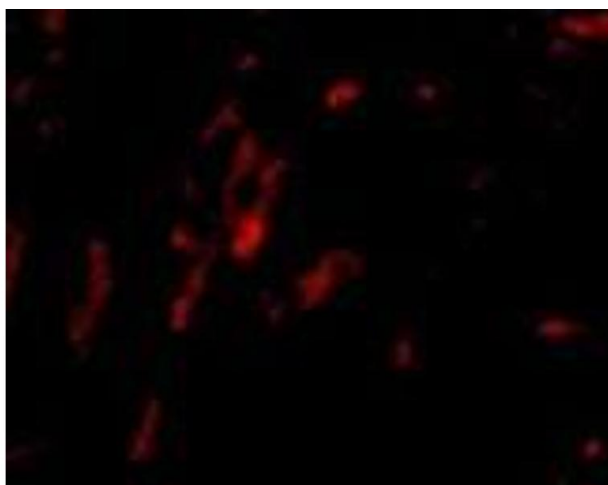
Handling

Buffer:	PBS containing 0.02 % sodium azide.
Preservative:	Sodium azide
Precaution of Use:	This product contains sodium azide: a POISONOUS AND HAZARDOUS SUBSTANCE which should be handled by trained staff only.
Storage:	4 °C
Storage Comment:	Store the antibody undiluted at 2-8 °C.



Western Blotting

Image 1. Western blot analysis of CDCA8 in Rat kidney lysate with AP30218PU-N CDCA8 antibody at (A) 1 and (B) 2 µg/ml.



Immunofluorescence

Image 2. Immunofluorescence of CDCA8 in rat kidney tissue with AP30218PU-N CDCA8 antibody at 20 µg/ml.