

Datasheet for ABIN499615
anti-CENPO antibody (Center)[Go to Product page](#)

1 Image

Overview

Quantity:	0.1 mg
Target:	CENPO
Binding Specificity:	Center
Reactivity:	Human, Mouse, Rat
Host:	Rabbit
Clonality:	Polyclonal
Conjugate:	This CENPO antibody is un-conjugated
Application:	Western Blotting (WB), Enzyme Immunoassay (EIA)

Product Details

Immunogen:	CENPO antibody was raised against a 16 amino acid peptide from near the center of human CENPO.
Isotype:	IgG
Purification:	Affinity chromatography purified via peptide column

Target Details

Target:	CENPO
Alternative Name:	CENP-O (CENPO Products)
Background:	Accurate chromosome segregation during mitosis requires a kinetochore to assemble correctly at the centromere of each chromatid and form a dynamic interface with the microtubules of the mitotic spindle. The kinetochore assembly includes the multisubunit CENP-H/I complex which

Target Details

can be divided into three functional classes based on phenotype analysis. One of these classes is referred to as the CENP-O class of proteins of which CENPO is the exemplar. These proteins form a stable complex with each other and are required for proper kinetochore function and for recovery from mitotic spindle damage. CENPO has also been shown to be an auto-antigen in a small population of anti-centromere antibodies- (ACA-) positive patients with scleroderma. Synonyms: CENPO, Centromere protein O, ICEN36, Interphase centromere complex protein 36

Gene ID: 79172

NCBI Accession: [NP_077298](#)

UniProt: [Q9BU64](#)

Application Details

Application Notes: ELISA. Western Blot: CENPO antibody can be used for detection of CENPO at 1 - 2 µg/mL.
Other applications not tested.
Optimal dilutions are dependent on conditions and should be determined by the user.

Restrictions: For Research Use only

Handling

Concentration: 1.0 mg/mL

Buffer: PBS containing 0.02 % sodium azide.

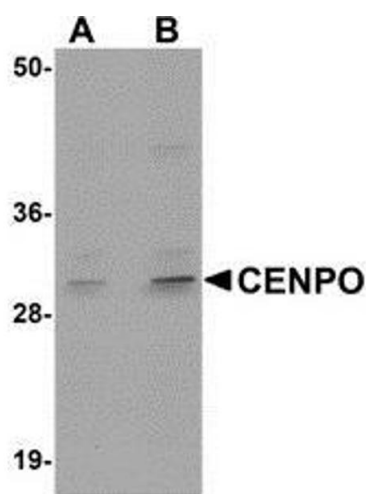
Preservative: Sodium azide

Precaution of Use: This product contains sodium azide: a POISONOUS AND HAZARDOUS SUBSTANCE which should be handled by trained staff only.

Handling Advice: Avoid repeated freezing and thawing.

Storage: -20 °C

Storage Comment: Store the antibody (in aliquots) at -20 °C.



Western Blotting

Image 1. Western blot analysis of CENPO in mouse kidney tissue lysate with AP30224PU-N CENPO antibody at (A) 1 and (B) 2 µg/ml.