

Datasheet for ABIN499643  
**anti-CABS1 antibody (C-Term)**



[Go to Product page](#)

2 Images

## Overview

Quantity:	0.1 mg
Target:	CABS1
Binding Specificity:	C-Term
Reactivity:	Human, Rat
Host:	Rabbit
Clonality:	Polyclonal
Conjugate:	This CABS1 antibody is un-conjugated
Application:	Western Blotting (WB), Enzyme Immunoassay (EIA)

## Product Details

Immunogen:	CLPH antibody was raised against a 15 amino acid peptide from near the carboxy terminus of human CLPH.
Isotype:	IgG
Purification:	Affinity chromatography purified via peptide column

## Target Details

Target:	CABS1
Alternative Name:	CLPH / C4orf35 ( <a href="#">CABS1 Products</a> )
Background:	CLPH (Casein-Like phosphoprotein) is a recently discovered, evolutionarily conserved, testis-specific cytoplasmic protein expressed exclusively in postmeiotic germ cells in rat spermatogenesis. CLPH is a novel casein kinase 2-phosphorylated disordered and calcium-

## Target Details

---

binding protein that displays strong variation in relative expression levels during spermatogenesis. It is frequently associated with the mitochondrial inner membrane during the last steps of spermatid differentiation and is involved in the extremely complex structural rearrangements occurring in haploid germ cells during spermiogenesis. Synonyms: Casein-like phosphoprotein, Testis development protein NYD-SP26

Gene ID: 85438

NCBI Accession: [NP\\_149113](#)

UniProt: [Q96KC9](#)

## Application Details

---

Application Notes: ELISA. Western Blot: CLIP170 antibody can be used for detection of CLIP170 at 0.5 - 1 µg/mL. Immunofluorescence. Other applications not tested. Optimal dilutions are dependent on conditions and should be determined by the user.

Restrictions: For Research Use only

## Handling

---

Concentration: 1.0 mg/mL

Buffer: PBS containing 0.02 % sodium azide.

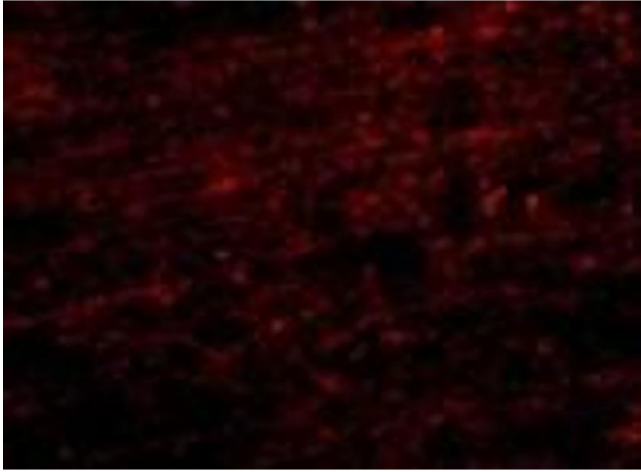
Preservative: Sodium azide

Precaution of Use: This product contains sodium azide: a POISONOUS AND HAZARDOUS SUBSTANCE which should be handled by trained staff only.

Handling Advice: Avoid repeated freezing and thawing.

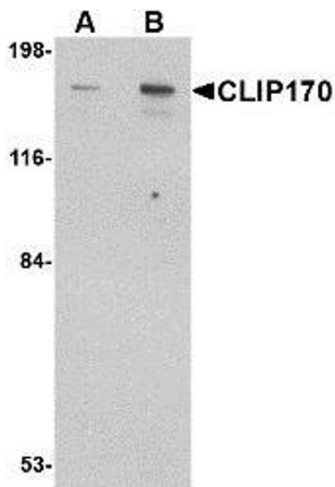
Storage: -20 °C

Storage Comment: Store the antibody (in aliquots) at -20 °C.



### Immunofluorescence

**Image 1.** Immunofluorescence of CLIP170 in human brain tissue with AP30238PU-N CLIP170 antibody at 20  $\mu\text{g/ml}$ .



### Western Blotting

**Image 2.** Western blot analysis of CLIP170 in rat brain tissue lysate with AP30238PU-N CLIP170 antibody at (A) 0.5 and (B) 1  $\mu\text{g/ml}$ .