

Datasheet for ABIN499650
anti-CRMP1 antibody (C-Term)[Go to Product page](#)

2 Images

Overview

Quantity:	0.1 mg
Target:	CRMP1
Binding Specificity:	C-Term
Reactivity:	Human, Mouse, Rat
Host:	Rabbit
Clonality:	Polyclonal
Conjugate:	This CRMP1 antibody is un-conjugated
Application:	Western Blotting (WB), Immunohistochemistry (Paraffin-embedded Sections) (IHC (p)), Enzyme Immunoassay (EIA)

Product Details

Immunogen:	Virus CRMP1 / Collapsin response mediator protein 1 / DRP-1 / dihydropyrimidinase-related protein 1 (C-Terminus) Peptide
Isotype:	IgG
Specificity:	CRMP1 antibody was raised against a 15 amino acid peptide from near the carboxy terminus of human CRMP1.
Purification:	Affinity chromatography purified via peptide column

Target Details

Target:	CRMP1
Alternative Name:	CRMP1 / DPYSL1 (CRMP1 Products)

Target Details

Background: Collapsin-response mediator proteins (CRMPs) are highly expressed in the developing brain where they play major roles in axonal outgrowth, neurite differentiation, and apoptosis (1). Their continued expression in areas of high synaptic remodeling such as the cerebellum, hippocampus, and the olfactory system suggests that these proteins may also be involved in adult brain plasticity (2). CRMP-1 was initially identified as a dihydro-pyrimidinase expressed exclusively in brain (3), later studies have shown that it is involved with neurotrophin (NT) 3-induced neurite formation and outgrowth (4). CRMP-1 localization switches from axonal to somatodendritic when neurons reach functional maturity, suggesting that it is involved in early neuronal differentiation as well as in later processes related to the survival or death of the newly generated neurons (5).
Synonyms: Collapsin response mediator protein 1, DRP-1, Dihydropyrimidinase-related protein 1, ULIP3, Unc-33-like phosphoprotein 3

Gene ID: 1400

UniProt: [Q14194](#)

Application Details

Application Notes: ELISA. Western Blot: CRMP1 antibody can be used for the detection of CRMP1 at 0.5 - 1 µg/mL. 3T3 cell lysate can be used as positive control. Immunohistochemistry.
Other applications not tested.
Optimal dilutions are dependent on conditions and should be determined by the user.

Restrictions: For Research Use only

Handling

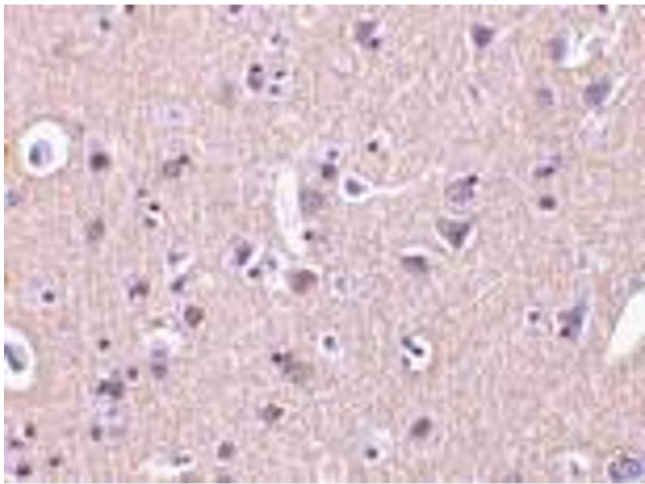
Buffer: PBS containing 0.02 % sodium azide.

Preservative: Sodium azide

Precaution of Use: This product contains sodium azide: a POISONOUS AND HAZARDOUS SUBSTANCE which should be handled by trained staff only.

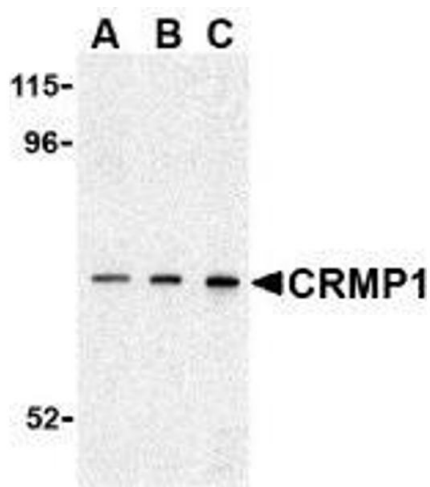
Storage: 4 °C

Storage Comment: Store the antibody undiluted at 2-8 °C.



Immunohistochemistry (Paraffin-embedded Sections)

Image 1. Immunohistochemistry of CRMP in human brain tissue with CRMP antibody at 2 µg/ml.



Western Blotting

Image 2. Western blot analysis of CRMP1 in 3T3 cell lysate with AP30242PU-N CRMP1 antibody at (A) 0.5, (B) 1 and (C) 2 µg/ml.