



[Go to Product page](#)

Datasheet for ABIN499677

## anti-CTRP6 antibody (C-Term)

### 2 Images

#### Overview

Quantity:	0.1 mg
Target:	CTRP6 (C1QTNF6)
Binding Specificity:	C-Term
Reactivity:	Human, Mouse
Host:	Rabbit
Clonality:	Polyclonal
Application:	Western Blotting (WB), Immunofluorescence (IF), Enzyme Immunoassay (EIA)

#### Product Details

Immunogen:	CTRP6 antibody was raised against a 15 amino acid peptide from near the carboxy-terminus of human CTRP6.
Isotype:	IgG
Purification:	Affinity Purified

#### Target Details

Target:	CTRP6 (C1QTNF6)
Alternative Name:	C1QTNF6 ( <a href="#">C1QTNF6 Products</a> )
Background:	Adipose tissue of an organism plays a major role in regulating physiologic and pathologic processes such as metabolism and immunity by producing and secreting a variety of bioactive molecules termed adipokines (reviewed in 1). One highly conserved family of adipokines is adiponectin/ACRP30 and its structural and functional paralogs, the C1q/tumor necrosis factor-

## Target Details

---

?-related proteins (CTRPs) 1-7 (2). Unlike adiponectin, which is expressed exclusively by differentiated adipocytes, the CTRPs are expressed in a wide variety of tissues (3). These proteins are thought to act mainly on liver and muscle tissue to control glucose and lipid metabolism. An analysis of the crystal structure of adiponectin revealed a structural and evolutionary link between TNF and C1q-containing proteins, suggesting that these proteins arose from a common ancestral innate immunity gene (4). CTRP6 contains at least 4 glycosylation motifs, suggesting that CTRP6 may be highly post-translationally modified (3). Synonyms: CTRP6, Complement C1q tumor necrosis factor-related protein 6

---

Gene ID: 114904

---

UniProt: [Q9BXI9](#)

## Application Details

---

Application Notes: E, WB, IF,  
Other applications not tested.  
Optimal dilutions are dependent on conditions and should be determined by the user. Add.  
Information: Blocking peptide available: blocking peptide (ABIN499676)

---

Restrictions: For Research Use only

## Handling

---

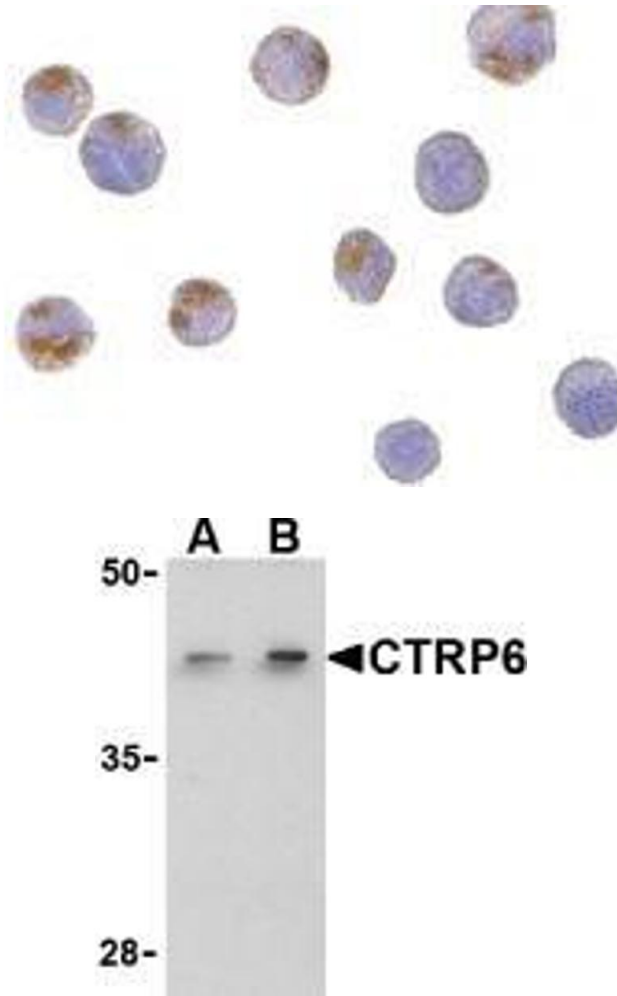
Buffer: PBS containing 0.02 % sodium azide.

---

Preservative: Sodium azide

---

Precaution of Use: This product contains sodium azide: a POISONOUS AND HAZARDOUS SUBSTANCE which should be handled by trained staff only.



#### Immunofluorescence

**Image 1.** Immunocytochemistry of CTRP6 in HeLa cells with AP30256PU-N CTRP6 antibody at 10  $\mu$ g/ml.

#### Western Blotting

**Image 2.** Western blot analysis of CTRP6 in HeLa cell lysate with AP30256PU-N CTRP6 antibody at (A) 1 and (B) 2  $\mu$ g/ml.