

Datasheet for ABIN499683  
**anti-CTRP7 antibody (N-Term)**[Go to Product page](#)

## 2 Images

## Overview

Quantity:	0.1 mg
Target:	CTRP7 (C1QTNF7)
Binding Specificity:	N-Term
Reactivity:	Human, Mouse, Rat
Host:	Rabbit
Clonality:	Polyclonal
Conjugate:	This CTRP7 antibody is un-conjugated
Application:	Western Blotting (WB), Immunofluorescence (IF), Enzyme Immunoassay (EIA)

## Product Details

Immunogen:	Human CTRP7 (N-Terminus) Peptide
Isotype:	IgG
Specificity:	CTRP7 antibody was raised against a 15 amino acid peptide from near the amino terminus of human CTRP7.
Purification:	Affinity chromatography purified via peptide column

## Target Details

Target:	CTRP7 (C1QTNF7)
Alternative Name:	C1QTNF7 ( <a href="#">C1QTNF7 Products</a> )
Background:	Adipose tissue of an organism plays a major role in regulating physiologic and pathologic

## Target Details

processes such as metabolism and immunity by producing and secreting a variety of bioactive molecules termed adipokines (reviewed in 1). One highly conserved family of adipokines is adiponectin/ACRP30 and its structural and functional paralogs, the C1q/tumor necrosis factor-related proteins (CTRPs) 1-7 (2). Unlike adiponectin, which is expressed exclusively by differentiated adipocytes, the CTRPs are expressed in a wide variety of tissues (3). These proteins are thought to act mainly on liver and muscle tissue to control glucose and lipid metabolism. An analysis of the crystal structure of adiponectin revealed a structural and evolutionary link between TNF and C1q-containing proteins, suggesting that these proteins arose from a common ancestral innate immunity gene (4). Like the other members of the adiponectin and CTRP protein family, the mature CTRP7 is secreted and can be found in the organism. Synonyms: CTRP7, Complement C1q tumor necrosis factor-related protein 7, ZACRP7

Gene ID: 114905

UniProt: [Q9BXJ2](#)

## Application Details

Application Notes: ELISA. Western Blot: CTRP7 antibody can be used for the detection of CTRP7 at 0.5 µg/mL. 3T3 cell lysate can be used as positive control. These proteins often migrate in SDS-PAGE at positions other than their predicted size. Immunohistochemistry.

Other applications not tested.

Optimal dilutions are dependent on conditions and should be determined by the user.

Restrictions: For Research Use only

## Handling

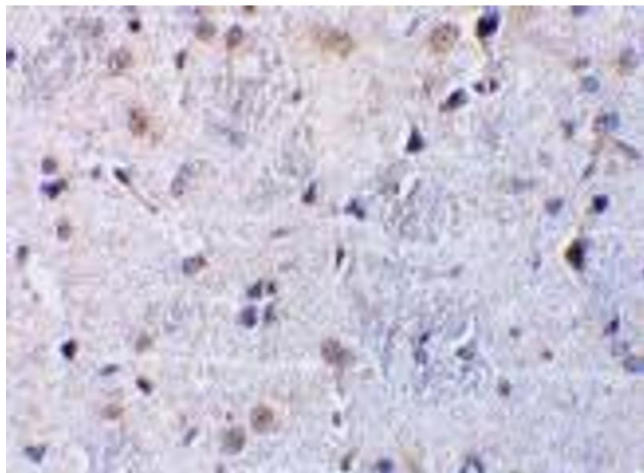
Buffer: PBS containing 0.02 % sodium azide.

Preservative: Sodium azide

Precaution of Use: This product contains sodium azide: a POISONOUS AND HAZARDOUS SUBSTANCE which should be handled by trained staff only.

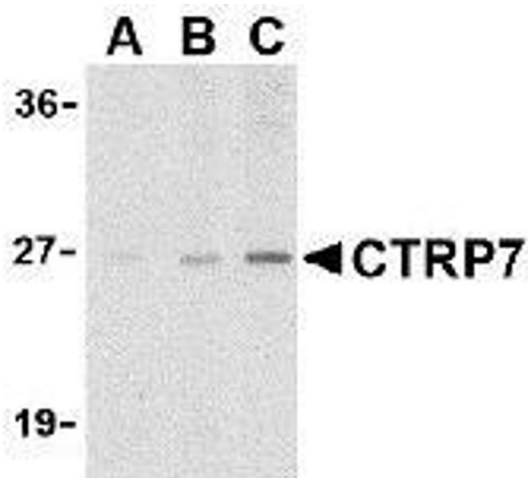
Storage: 4 °C

Storage Comment: Store the antibody undiluted at 2-8 °C.



#### Immunohistochemistry (Paraffin-embedded Sections)

**Image 1.** Immunohistochemical staining of rat brain tissue using AP30259PU-N CTRP7 antibody at 10 µg/ml.



#### Western Blotting

**Image 2.** Western blot analysis of CTRP7 in 3T3 cell lysate with AP30259PU-N CTRP7 antibody at (A) 1, (B) 2, and (C) 4 µg/ml.