

Datasheet for ABIN499686  
**anti-CUEDC1 antibody (C-Term)**[Go to Product page](#)

## 2 Images

## Overview

Quantity:	0.1 mg
Target:	CUEDC1
Binding Specificity:	C-Term
Reactivity:	Human, Mouse, Rat
Host:	Rabbit
Clonality:	Polyclonal
Conjugate:	This CUEDC1 antibody is un-conjugated
Application:	Western Blotting (WB), Immunohistochemistry (Paraffin-embedded Sections) (IHC (p)), Enzyme Immunoassay (EIA)

## Product Details

Immunogen:	CUEDC1 antibody was raised against a 16 amino acid peptide near the carboxy terminus of human CUEDC1.
Isotype:	IgG
Specificity:	This antibody reacts to CUEDC1.
Purification:	Affinity chromatography purified via peptide column

## Target Details

Target:	CUEDC1
Alternative Name:	CUEDC1 ( <a href="#">CUEDC1 Products</a> )

## Target Details

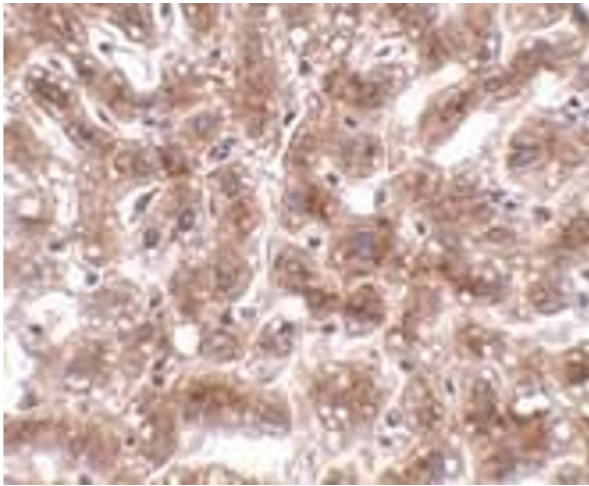
Background:	The CUE (coupling of ubiquitin conjugation to endoplasmic reticulum degradation) domain is an evolutionarily conserved, ~40 amino acid monoubiquitin-binding domain that mediates intramolecular monoubiquitylation. CUE domains are present in eukaryotic proteins that are involved in ubiquitination and protein trafficking pathways and may be required for ubiquitination of the proteins in which they are found. CUEDC1 (CUE domain-containing protein 1) is a 386 amino acid protein that contains one CUE domain, suggesting a possible role in protein trafficking and degradation pathways. Two isoforms of CUEDC1 exist due to alternative splicing events. Defects in the gene encoding CUEDC1 may be associated with early stage cervical cancer, implicating CUEDC1 as a potential tumor marker. CUEDC1 antibody will not cross-react with CUEDC2.Synonyms: CUE domain-containing protein 1
Gene ID:	404093
UniProt:	<a href="#">Q9NWM3</a>

## Application Details

Application Notes:	ELISA. Western Blot: CUEDC1 antibody can be used for detection of CUEDC1 at 0.5 - 1 µg/mL. Immunohistochemistry. Other applications not tested. Optimal dilutions are dependent on conditions and should be determined by the user.
Restrictions:	For Research Use only

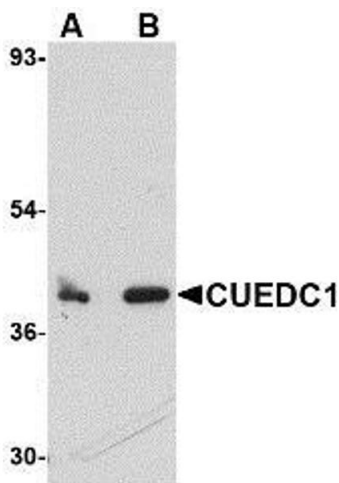
## Handling

Buffer:	PBS containing 0.02 % sodium azide.
Preservative:	Sodium azide
Precaution of Use:	This product contains sodium azide: a POISONOUS AND HAZARDOUS SUBSTANCE which should be handled by trained staff only.
Storage:	4 °C
Storage Comment:	Store the antibody undiluted at 2-8 °C.



**Immunohistochemistry (Paraffin-embedded Sections)**

**Image 1.** Immunohistochemistry of CUEDC1 in human liver tissue with CUEDC1 antibody at 2 µg/ml.



**Western Blotting**

**Image 2.** Western blot analysis of CUEDC1 in rat liver tissue lysate with AP30261PU-N CUEDC1 antibody at (A) 0.5 and (B) 1 µg/ml.