



[Go to Product page](#)

Datasheet for ABIN499688

anti-CUEDC2 antibody (C-Term)

2 Images

Overview

Quantity:	0.1 mg
Target:	CUEDC2
Binding Specificity:	C-Term
Reactivity:	Human, Mouse, Rat
Host:	Rabbit
Clonality:	Polyclonal
Conjugate:	This CUEDC2 antibody is un-conjugated
Application:	Western Blotting (WB), Immunofluorescence (IF), Enzyme Immunoassay (EIA)

Product Details

Immunogen:	CUEDC2 antibody was raised against a 19 amino acid peptide from near the carboxy terminus of human CUEDC2.
Isotype:	IgG
Specificity:	This antibody reacts to CUEDC2.
Purification:	Affinity chromatography purified via peptide column

Target Details

Target:	CUEDC2
Alternative Name:	CUEDC2 (CUEDC2 Products)
Background:	The CUE (coupling of ubiquitin conjugation to endoplasmic reticulum degradation) domain is an

Target Details

evolutionarily conserved, ~40 amino acid monoubiquitin-binding domain that mediates intramolecular monoubiquitylation. CUE domains are present in eukaryotic proteins that are involved in ubiquitination and protein trafficking pathways and may be required for ubiquitination of the proteins in which they are found. CUEDC2 (CUE domain-containing protein 2) was found through a yeast two-hybrid screening as a protein that interacts with the progesterone receptor (PR) and promotes progesterone-induced PR degradation by the ubiquitin-proteasome pathway. CUEDC2 also decreases the sumoylation of PR. CUEDC2 has also been found to interact with IKK-a and IKK-b and decrease the activation of NF-kB by decreasing the activation of IKK. CUEDC2 antibody will not cross-react with CUEDC1. Synonyms: C10orf66, CUE domain-containing protein 2, HOYS6

Gene ID: 79004

NCBI Accession: [NP_076945](#)

UniProt: [Q9H467](#)

Application Details

Application Notes: ELISA. Western Blot: CUEDC2 antibody can be used for detection of CUEDC2 at 1 - 2 µg/mL. Immunocytochemistry. Other applications not tested. Optimal dilutions are dependent on conditions and should be determined by the user.

Restrictions: For Research Use only

Handling

Buffer: PBS containing 0.02 % sodium azide.

Preservative: Sodium azide

Precaution of Use: This product contains sodium azide: a POISONOUS AND HAZARDOUS SUBSTANCE which should be handled by trained staff only.

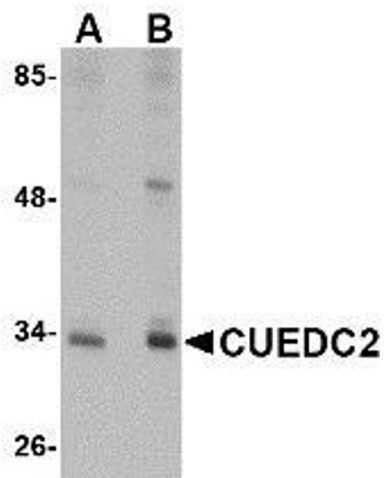
Storage: 4 °C

Storage Comment: Store the antibody undiluted at 2-8 °C.



Immunofluorescence

Image 1. Immunocytochemistry of CUEDC2 in HeLa cells with AP30262PU-N CUEDC2 antibody at 5 µg/ml.



Western Blotting

Image 2. Western blot analysis of CUEDC2 in HeLa cell lysate with AP30262PU-N CUEDC2 antibody at (A) 1 and (B) 2 µg/ml.