

Datasheet for ABIN499692

**anti-CX3CR1 antibody (N-Term)**

2 Images

1 Publication

[Go to Product page](#)

## Overview

Quantity:	0.1 mg
Target:	CX3CR1
Binding Specificity:	N-Term
Reactivity:	Human, Mouse, Rat
Host:	Rabbit
Clonality:	Polyclonal
Conjugate:	This CX3CR1 antibody is un-conjugated
Application:	Western Blotting (WB), Flow Cytometry (FACS), Immunohistochemistry (Paraffin-embedded Sections) (IHC (p)), Enzyme Immunoassay (EIA)

## Product Details

Immunogen:	Human CX3CR1 (N-Terminus) Peptide
Isotype:	IgG
Specificity:	CX3CR1 antibody was raised against a peptide corresponding to amino acids 2 to 21 of human CX3CR1. The sequence differs from those of mouse and rat CX3CR1 by four amino acids (3,4).
Purification:	Affinity chromatography purified via peptide column

## Target Details

Target:	CX3CR1
Alternative Name:	CX3CR1 / GPR13 ( <a href="#">CX3CR1 Products</a> )

## Target Details

Background:	<p>CX3CR1 is one of the chemokine receptors that are required as coreceptors for HIV infection. The genes encoding human, murine, and rat CX3CR1 were cloned and designated V28 and CMKBRL1, CX3CR1, and RBS11, respectively, (1-4). The encoded seven transmembrane protein was recently identified as the receptor for a novel transmembrane molecule, fractalkine, and renamed CX3CR1 (5). Recently, CX3CR1 was found to serve as a coreceptor for HIV-1 and HIV-2 envelope fusion and virus infection, which can be inhibited by fractokine (6). CX3CR1 mediates leukocyte migration and adhesion (5). CX3CR1 is expressed in a variety of human tissues and cell lines (2).Synonyms: Beta chemokine receptor-like 1, C-X3-C CKR-1, CMK-BRL-1, CMKBRL1, CX3C chemokine receptor 1, Fractalkine receptor, G-protein coupled receptor 13, V28</p>
Gene ID:	1524
NCBI Accession:	<a href="#">NP_001328</a>
UniProt:	<a href="#">P49238</a>
Pathways:	<a href="#">Cellular Response to Molecule of Bacterial Origin</a>

## Application Details

Application Notes:	<p>ELISA. Western Blot: CX3CR1 antibody can be used for detection of CX3CR1 at 1/500 to 1/2000dilution. An approximately 50 kDa band can be detected. Immunohistochemistry. FACS. Other applications not tested.</p> <p>Optimal dilutions are dependent on conditions and should be determined by the user.</p>
Restrictions:	For Research Use only

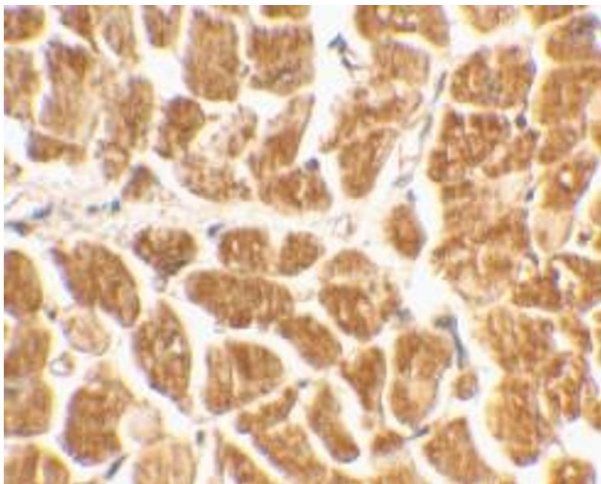
## Handling

Buffer:	PBS containing 0.02 % sodium azide.
Preservative:	Sodium azide
Precaution of Use:	This product contains sodium azide: a POISONOUS AND HAZARDOUS SUBSTANCE which should be handled by trained staff only.
Storage:	4 °C
Storage Comment:	Store the antibody undiluted at 2-8 °C.

Publications

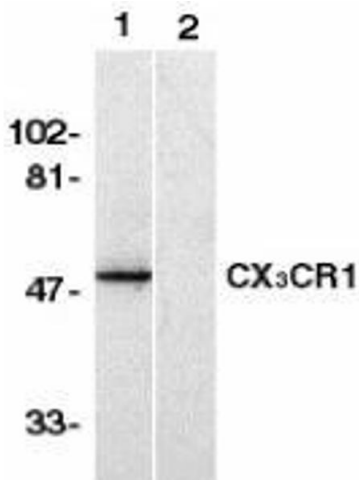
Product cited in: Wei, Cao, Yu, Liu, Wang: "Overexpression of CX3CR1 is associated with cellular metastasis, proliferation and survival in gastric cancer." in: **Oncology reports**, Vol. 33, Issue 2, pp. 615-24, (2015) ([PubMed](#)).

Images



Immunohistochemistry (Paraffin-embedded Sections)

**Image 1.** Immunohistochemical staining of human heart tissue using AP30264PU-N CX3CR1 antibody at 2 µg/ml.



Western Blotting

**Image 2.** Western blot analysis of CX3CR1 in human spleen lysate with AP30264PU-N CX3CR1 antibody in the absence (lane 1) or presence of blocking peptide (lane 2).