



[Go to Product page](#)

Datasheet for ABIN499694

## anti-CX3CR1 antibody (Extracellular Loop)

### 2 Images

#### Overview

Quantity:	0.1 mg
Target:	CX3CR1
Binding Specificity:	Extracellular Loop
Reactivity:	Human
Host:	Rabbit
Clonality:	Polyclonal
Conjugate:	This CX3CR1 antibody is un-conjugated
Application:	Western Blotting (WB), Immunohistochemistry (Paraffin-embedded Sections) (IHC (p)), Enzyme Immunoassay (EIA)

#### Product Details

Immunogen:	Human CX3CR1 (Extracellular Loop) Peptide
Isotype:	IgG
Specificity:	CX3CR1 antibody was raised against a peptide corresponding to amino acids in an extracellular loop of human CX3CR1. The sequence is identical to that of rat CX3CR1 and differs from that of mouse CX3CR1 by one amino acid (3,4).
Purification:	Affinity chromatography purified via peptide column

#### Target Details

Target:	CX3CR1
Alternative Name:	CX3CR1 / GPR13 ( <a href="#">CX3CR1 Products</a> )

## Target Details

---

Background:	<p>CX3CR1 is one of the chemokine receptors that are required as coreceptors for HIV infection. The genes encoding human, mouse, and rat CX3CR1 were cloned and designated V28 and CMKBRL1, CX3CR1, and RBS11, respectively, (1-4). The encoded seven transmembrane protein was recently identified as the receptor for a novel transmembrane molecule, fractalkine, and renamed CX3CR1 (5). Recently, CX3CR1 was found to serve as a coreceptor for HIV-1 and HIV-2 envelope fusion and virus infection, which can be inhibited by fractokine (6). CX3CR1 mediates leukocyte migration and adhesion (5). CX3CR1 is expressed in a variety of human tissues and cell lines (2).Synonyms: Beta chemokine receptor-like 1, C-X3-C CKR-1, CMK-BRL-1, CMKBRL1, CX3C chemokine receptor 1, Fractalkine receptor, G-protein coupled receptor 13, V28</p>
Gene ID:	1524
UniProt:	<a href="#">P49238</a>
Pathways:	<a href="#">Cellular Response to Molecule of Bacterial Origin</a>

## Application Details

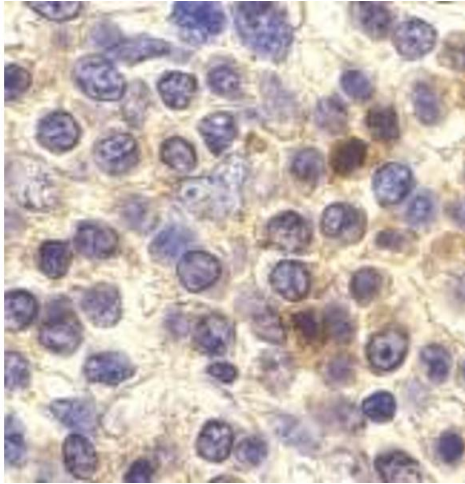
---

Application Notes:	<p>ELISA. Western Blot: CX3CR1 antibody can be used for detection of CX3CR1 at 1/500 dilution. THP-1 cell lysate can be used as positive control and an approximately 50 kDa band can be detected. Immunohistochemistry.</p> <p>Other applications not tested.</p> <p>Optimal dilutions are dependent on conditions and should be determined by the user.</p>
Restrictions:	For Research Use only

## Handling

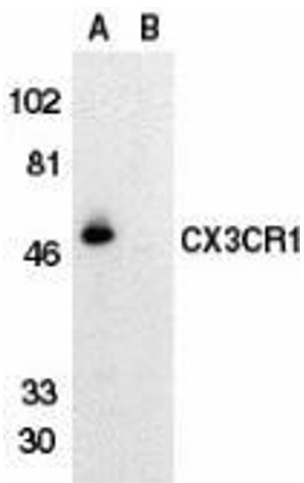
---

Buffer:	PBS containing 0.02 % sodium azide.
Preservative:	Sodium azide
Precaution of Use:	This product contains sodium azide: a POISONOUS AND HAZARDOUS SUBSTANCE which should be handled by trained staff only.
Storage:	4 °C
Storage Comment:	Store the antibody undiluted at 2-8 °C.



#### Immunohistochemistry (Paraffin-embedded Sections)

**Image 1.** Immunohistochemistry of CX3CR1 in human spleen cells with CX3CR1 antibody at 10 µg/ml.



#### Western Blotting

**Image 2.** Western blot analysis of CX3CR1 in THP-1 cell lysate in the absence (lane A) or presence (lane B) of blocking peptide with AP30265PU-N CX3CR1 antibody at 1/500 dilution.