



[Go to Product page](#)

Datasheet for ABIN499716

anti-DCLK1 antibody (N-Term)

2 Images

Overview

Quantity:	0.1 mg
Target:	DCLK1
Binding Specificity:	N-Term
Reactivity:	Human, Mouse, Rat
Host:	Rabbit
Clonality:	Polyclonal
Conjugate:	This DCLK1 antibody is un-conjugated
Application:	Western Blotting (WB), Enzyme Immunoassay (EIA)

Product Details

Immunogen:	DCLK1 antibody was raised against a 14 amino acid peptide near the amino terminus of human DCLK1.
Isotype:	IgG
Purification:	Affinity chromatography purified via peptide column

Target Details

Target:	DCLK1
Alternative Name:	Doublecortin-Like Kinase 1 (DCLK1 Products)
Background:	DCLK1 is one of three doublecortin-like kinases similar to the Ca ²⁺ /calmodulin-dependent protein kinase (CaMK) family. DCLK1 mRNA, like that of the homologous DCLK2 and DCLK3, is highly expressed in adult brain, but only DCLK1 and DCLK2 transcripts are present in human

Target Details

fetal brain and the developing mouse embryo, suggesting that DCLK1 and DCLK2 may play roles in cortical development. The DCLK proteins are homologous to Doublecortin (DCX), a gene that is mutated in X-linked human lissencephaly. In mouse models where the DCX gene has been disrupted, DCLK1 expression increases slightly and appears to compensate for the loss of DCX, as mice mutant for both DCX and DCLK1 show a severe phenotype including perinatal lethality, disorganized neocortical layering, and profound hippocampal cytoarchitectural disorganization. Unlike DCLK1, DCLK2 expression does not change in DCX-null mice. Synonyms: CLICK1, DCAMKL1, DCDC3A, DCKL1, DCLK, KIAA0369, Serine/threonine-protein kinase DCLK1

Gene ID: 9201

NCBI Accession: [NP_004725](#)

UniProt: [O15075](#)

Application Details

Application Notes: ELISA. Western Blot: 0.5 - 1 µg/mL. Immunohistochemistry.
Other applications not tested.
Optimal dilutions are dependent on conditions and should be determined by the user.

Restrictions: For Research Use only

Handling

Concentration: 1.0 mg/mL

Buffer: PBS containing 0.02 % sodium azide.

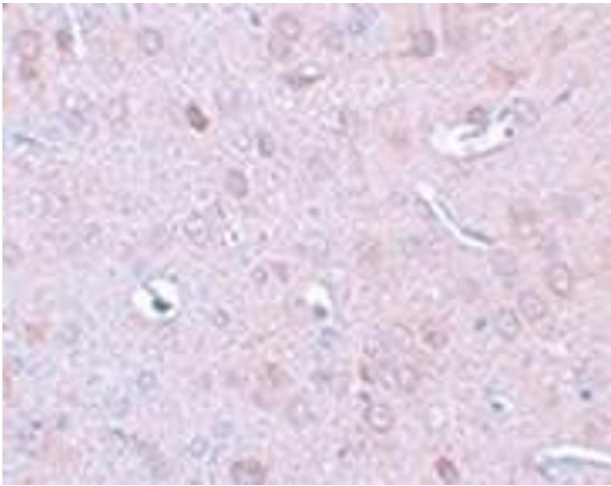
Preservative: Sodium azide

Precaution of Use: This product contains sodium azide: a POISONOUS AND HAZARDOUS SUBSTANCE which should be handled by trained staff only.

Handling Advice: Avoid repeated freezing and thawing.

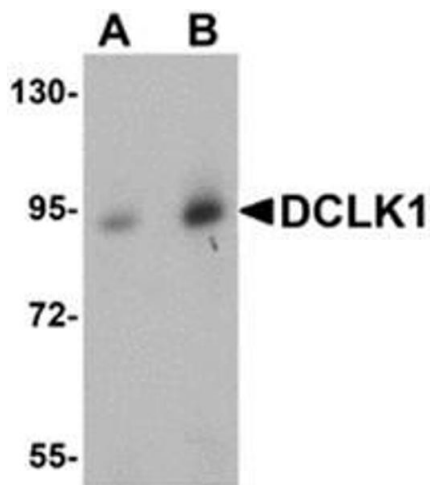
Storage: -20 °C

Storage Comment: Store the antibody (in aliquots) at -20 °C.



Immunohistochemistry (Paraffin-embedded Sections)

Image 1. Immunohistochemistry of DLCK1 in rat brain tissue with DLCK1 antibody at 2.5 µg/ml.



Western Blotting

Image 2. Western blot analysis of DCLK1 in human brain tissue lysate with AP30276PU-N DCLK1 antibody at (A) 0.5 and (B) 1 µg/ml.