

Datasheet for ABIN499718
anti-DCLK2 antibody (C-Term)[Go to Product page](#)

2 Images

Overview

Quantity:	0.1 mg
Target:	DCLK2
Binding Specificity:	C-Term
Reactivity:	Human, Mouse, Rat
Host:	Rabbit
Clonality:	Polyclonal
Conjugate:	This DCLK2 antibody is un-conjugated
Application:	Western Blotting (WB), Enzyme Immunoassay (EIA)

Product Details

Immunogen:	DCLK2 antibody was raised against a 14 amino acid peptide near the carboxy terminus of human DCLK2.
Isotype:	IgG
Purification:	Affinity chromatography purified via peptide column

Target Details

Target:	DCLK2
Alternative Name:	Doublecortin-Like Kinase 2 (DCLK2 Products)
Background:	DCLK2 is one of three doublecortin-like kinases similar to the Ca ²⁺ /calmodulin-dependent protein kinase (CaMK) family. DCLK2 mRNA, like that of the homologous DCLK1 and DCLK3, is highly expressed in adult brain, but only DCLK1 and DCLK2 transcripts are present in human

Target Details

fetal brain and the developing mouse embryo, suggesting that DCLK1 and DCLK2 may play roles in cortical development. The DCLK proteins are homologous to Doublecortin (DCX), a protein that is mutated in X-linked human lissencephaly. In mouse models where the DCX gene has been disrupted, DCLK1 expression increases slightly and appears to compensate for the loss of DCX, as mice mutant for both DCX and DCLK1 show a severe phenotype including perinatal lethality, disorganized neocortical layering, and profound hippocampal cytoarchitectural disorganization. Unlike DCLK1, DCLK2 expression does not change in DCX-null mice. Synonyms: CLICK2, DCAMKL2, DCDC3B, DCK2, DCLK2, DKFZp761I032, Serine/threonine-protein kinase DCLK2

Gene ID: 166614

NCBI Accession: [NP_001035350](#)

UniProt: [Q8N568](#)

Application Details

Application Notes: ELISA. Western Blot: 1 - 2 µg/mL. Immunohistochemistry.
Other applications not tested.
Optimal dilutions are dependent on conditions and should be determined by the user.

Restrictions: For Research Use only

Handling

Concentration: 1.0 mg/mL

Buffer: PBS containing 0.02 % sodium azide.

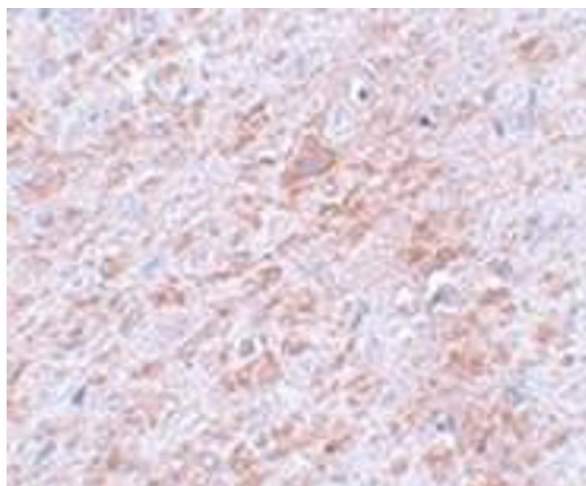
Preservative: Sodium azide

Precaution of Use: This product contains sodium azide: a POISONOUS AND HAZARDOUS SUBSTANCE which should be handled by trained staff only.

Handling Advice: Avoid repeated freezing and thawing.

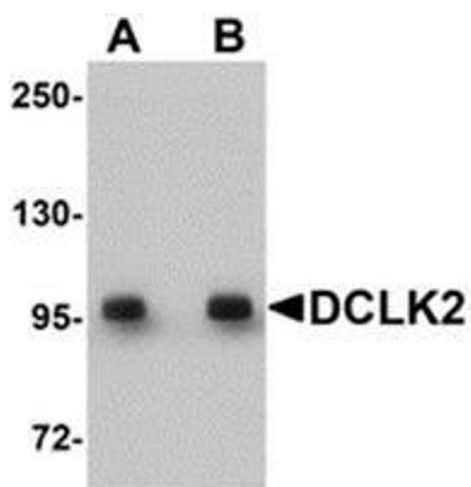
Storage: -20 °C

Storage Comment: Store the antibody (in aliquots) at -20 °C.



Immunohistochemistry (Paraffin-embedded Sections)

Image 1. Immunohistochemistry of DLCK2 in rat brain tissue with DLCK2 antibody at 5 µg/ml.



Western Blotting

Image 2. Western blot analysis of DCLK2 in rat brain tissue lysate with AP30277PU-N DCLK2 antibody at (A) 1 and (B) 2 µg/ml.