



[Go to Product page](#)

Datasheet for ABIN499720

## anti-DCLK3 antibody (N-Term)

### 2 Images

#### Overview

Quantity:	0.1 mg
Target:	DCLK3
Binding Specificity:	N-Term
Reactivity:	Human, Mouse
Host:	Rabbit
Clonality:	Polyclonal
Application:	Western Blotting (WB), Enzyme Immunoassay (EIA)

#### Product Details

Immunogen:	DCLK3 antibody was raised against a 14 amino acid peptide near the amino terminus of human DCLK3.
Isotype:	IgG
Purification:	Affinity chromatography purified via peptide column

#### Target Details

Target:	DCLK3
Alternative Name:	Doublecortin-Like Kinase 3 ( <a href="#">DCLK3 Products</a> )
Background:	DCLK3 is one of three doublecortin-like kinases similar to the Ca <sup>2+</sup> /calmodulin-dependent protein kinase (CaMK) family. DCLK3 mRNA, like that of the homologous DCLK1 and DCLK3, is highly expressed in adult brain, but only DCLK3 transcripts are present in liver and kidney, suggesting that DCLK3 may play other roles than in cortical development. The DCLK proteins

## Target Details

---

are homologous to Doublecortin (DCX), a protein that is mutated in X-linked human lissencephaly. In mouse models where the DCX gene has been disrupted, DCLK1 expression increases slightly and appears to compensate for the loss of DCX, as mice mutant for both DCX and DCLK1 show a severe phenotype including perinatal lethality, disorganized neocortical layering, and profound hippocampal cytoarchitectural disorganization. Synonyms: DCAMKL3, DCDC3C, DCK3, DCLK3, KIAA1765, Serine/threonine-protein kinase DCLK3

Gene ID: 85443

NCBI Accession: [NP\\_208382](#)

UniProt: [Q9C098](#)

## Application Details

---

Application Notes: ELISA. Western Blot: 1 - 2 µg/mL. Immunofluorescence.  
Other applications not tested.  
Optimal dilutions are dependent on conditions and should be determined by the user.

Restrictions: For Research Use only

## Handling

---

Concentration: 1.0 mg/mL

Buffer: PBS containing 0.02 % sodium azide.

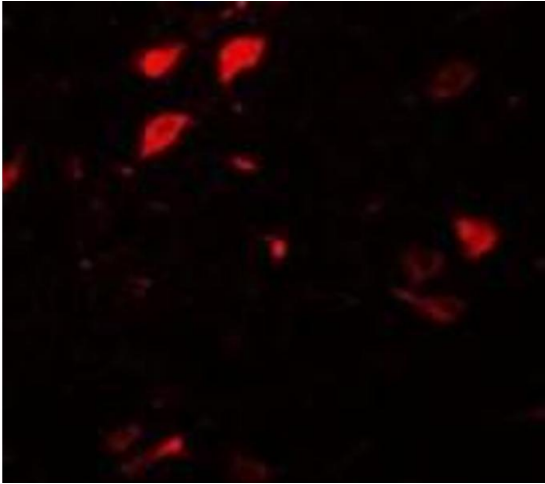
Preservative: Sodium azide

Precaution of Use: This product contains sodium azide: a POISONOUS AND HAZARDOUS SUBSTANCE which should be handled by trained staff only.

Handling Advice: Avoid repeated freezing and thawing.

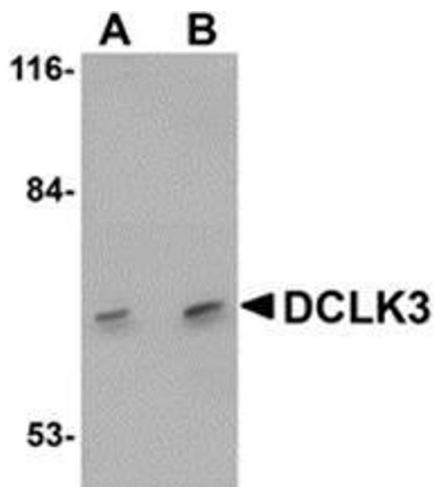
Storage: -20 °C

Storage Comment: Store the antibody (in aliquots) at -20 °C.



### Immunofluorescence

**Image 1.** Immunofluorescence of DLCK3 in human brain tissue with AP30278PU-N DLCK3 antibody at 20  $\mu\text{g/ml}$ .



### Western Blotting

**Image 2.** Western blot analysis of DCLK3 in K562 cell lysate with AP30278PU-N DCLK3 antibody at (A) 1 and (B) 2  $\mu\text{g/ml}$ .