

Datasheet for ABIN499748  
**anti-DISC1 antibody (Center)**



[Go to Product page](#)

2 Images

## Overview

Quantity:	0.1 mg
Target:	DISC1
Binding Specificity:	Center
Reactivity:	Human, Mouse
Host:	Rabbit
Clonality:	Polyclonal
Conjugate:	This DISC1 antibody is un-conjugated
Application:	Western Blotting (WB), Immunofluorescence (IF), Enzyme Immunoassay (EIA)

## Product Details

Immunogen:	DISC1 antibody was raised against a 18 amino acid peptide from near the center of human DISC1.
Isotype:	IgG
Specificity:	This antibody reacts to DISC1.
Purification:	Affinity chromatography purified via peptide column

## Target Details

Target:	DISC1
Alternative Name:	DISC1 ( <a href="#">DISC1 Products</a> )
Background:	Disrupted in schizophrenia 1 (DISC1) is a candidate gene for susceptibility to schizophrenia. It

## Target Details

---

was discovered through chromosomal analysis of a large Scottish family whose members exhibited schizophrenia and related psychiatric disorders. Through yeast two-hybrid screening, it was discovered that DISC1 interacts with many members of the centrosome and cytoskeletal system including MAP1A and Nudel. More recently, DISC1 has been found to regulate the transport of a complex containing Nudel, the lissencephaly-1 (LIS1) protein, and 14-3-3e from neuronal cell bodies to the axons by the action of the microtubule-dependent directed motor protein kinesin-1, also known as KIF5A. Decreased expression of DISC1 in neurons caused an accelerated rate of neuronal integration, resulting in aberrant morphological development, suggesting that DISC1 plays a role in dendritic development and synapse formation. DISC1 has at least four known isoforms. Synonyms: DISC-1, Disrupted in schizophrenia 1 protein, KIAA0457

Gene ID:	27185
NCBI Accession:	<a href="#">NP_061132</a>
UniProt:	<a href="#">Q9NRI5</a>
Pathways:	<a href="#">Regulation of Cell Size</a>

## Application Details

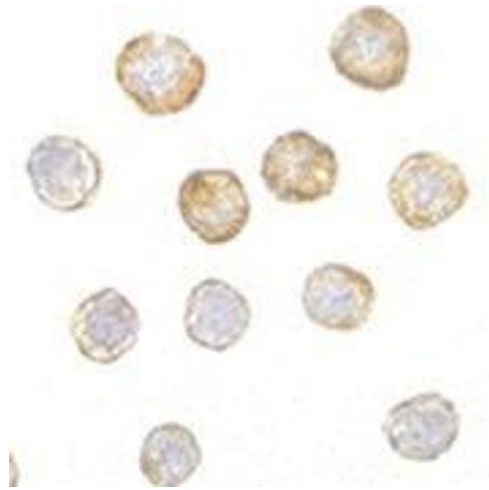
---

Application Notes:	ELISA. Western Blot: 1 - 2 µg/mL. Immunocytochemistry. Other applications not tested. Optimal dilutions are dependent on conditions and should be determined by the user.
Restrictions:	For Research Use only

## Handling

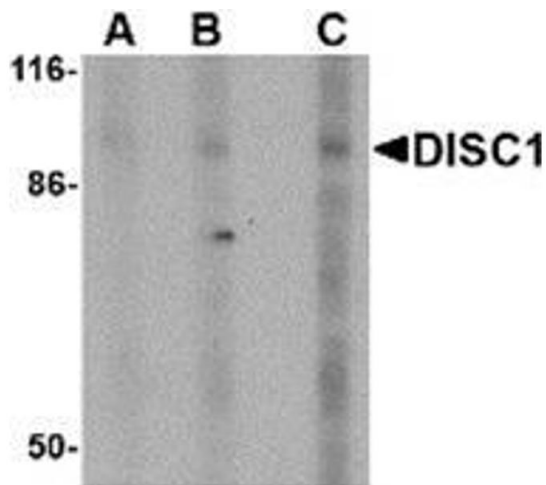
---

Buffer:	PBS containing 0.02 % sodium azide.
Preservative:	Sodium azide
Precaution of Use:	This product contains sodium azide: a POISONOUS AND HAZARDOUS SUBSTANCE which should be handled by trained staff only.
Storage:	4 °C
Storage Comment:	Store the antibody undiluted at 2-8 °C.



#### Immunofluorescence

**Image 1.** Immunocytochemistry of DISC1 in HeLa cells with AP30292PU-N DISC1 antibody at 5 µg/ml.



#### Western Blotting

**Image 2.** Western blot analysis of DISC1 in SK-N-SH cell lysate with AP30292PU-N DISC1 antibody at (A) 0.5, (B) 1 and (C) 2 µg/ml.