

Datasheet for ABIN4997693
anti-BTN2A1 antibody (AA 101-200)[Go to Product page](#)

3 Images

Overview

Quantity:	100 µL
Target:	BTN2A1
Binding Specificity:	AA 101-200
Reactivity:	Human
Host:	Rabbit
Clonality:	Polyclonal
Conjugate:	This BTN2A1 antibody is un-conjugated
Application:	ELISA, Immunofluorescence (Cultured Cells) (IF (cc)), Immunofluorescence (Paraffin-embedded Sections) (IF (p)), Immunohistochemistry (Frozen Sections) (IHC (fro)), Immunohistochemistry (Paraffin-embedded Sections) (IHC (p)), Immunocytochemistry (ICC)

Product Details

Immunogen:	KLH conjugated synthetic peptide derived from human BTN2A1
Isotype:	IgG
Cross-Reactivity:	Human
Purification:	Purified by Protein A.

Target Details

Target:	BTN2A1
Alternative Name:	BTN2A1 (BTN2A1 Products)

Target Details

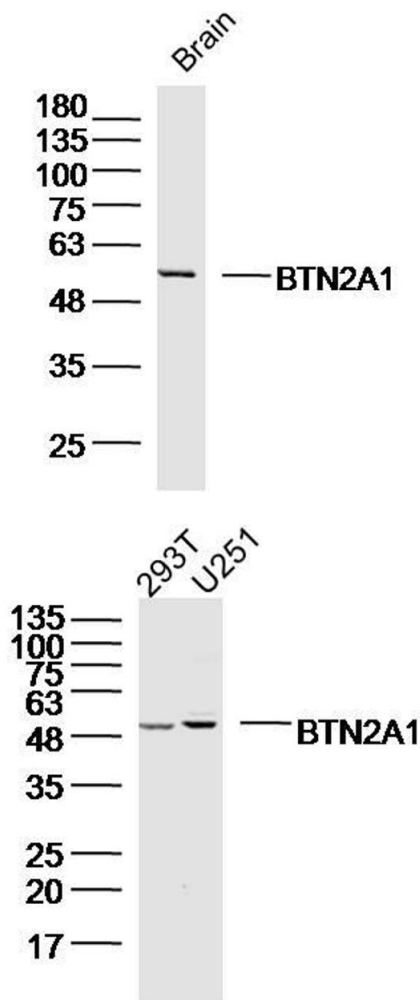
Background:	<p>Synonyms: Butyrophilin subfamily 2 member A1, BTN2A1, BT2.1, BTF1</p> <p>Background: This gene encodes a member of the immunoglobulin superfamily. The gene is located in a cluster of butyrophilin-like genes in the juxta-telomeric region of the major histocompatibility complex on chromosome 6. A pseudogene of this gene has been identified in this cluster. The encoded protein is an integral plasma membrane protein involved in lipid, fatty-acid, and sterol metabolism. Alterations in this gene may be associated with several disease states including metabolic syndrome. Multiple alternatively spliced transcript variants encoding different isoforms have been found for this gene. [provided by RefSeq, Jul 2013]</p>
Gene ID:	11120
UniProt:	Q7KYR7
Pathways:	Activated T Cell Proliferation

Application Details

Application Notes:	<p>ELISA 1:500-1000</p> <p>IHC-P 1:200-400</p> <p>IHC-F 1:100-500</p> <p>IF(IHC-P) 1:50-200</p> <p>IF(IHC-F) 1:50-200</p> <p>IF(ICC) 1:50-200</p> <p>ICC 1:100-500</p>
Restrictions:	For Research Use only

Handling

Format:	Liquid
Concentration:	1 µg/µL
Buffer:	0.01M TBS(pH 7.4) with 1 % BSA, 0.02 % Proclin300 and 50 % Glycerol.
Preservative:	ProClin
Precaution of Use:	This product contains ProClin: a POISONOUS AND HAZARDOUS SUBSTANCE, which should be handled by trained staff only.
Storage:	4 °C,-20 °C
Storage Comment:	Shipped at 4°C. Store at -20°C for one year. Avoid repeated freeze/thaw cycles.

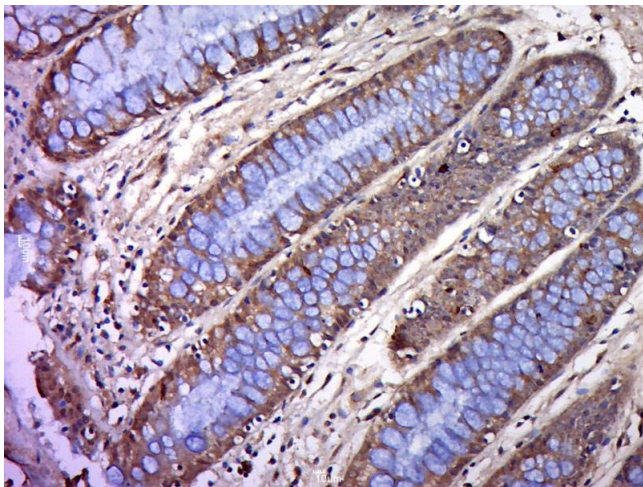


Western Blotting

Image 1. Mouse brain cell lysates probed with BTN2A1 Polyclonal Antibody, Unconjugated (bs-20473R) at 1:300 overnight at 4°C. Followed by a conjugated secondary antibody at 1:20000 for 90 min at 37°C.

Western Blotting

Image 2. Lane 1: 293T; Lane 2: U251 cell lysates probed with BTN2A1 Polyclonal Antibody, Unconjugated (bs-20473R) at 1:300 overnight at 4°C. Followed by a conjugated secondary antibody at 1:20000 for 90 min at 37°C.



Immunohistochemistry (Paraffin-embedded Sections)

Image 3. Formalin-fixed and paraffin embedded human colon cancer labeled with BTN2A1 Polyclonal Antibody, Unconjugated (bs-20473R) at 1:200, followed by conjugation to the secondary antibody and DAB staining