

Datasheet for ABIN499776  
**anti-EBI3 antibody (C-Term)**



[Go to Product page](#)

2 Images

## Overview

Quantity:	0.1 mg
Target:	EBI3 (IL-27b)
Binding Specificity:	C-Term
Reactivity:	Human, Mouse
Host:	Rabbit
Clonality:	Polyclonal
Conjugate:	This EBI3 antibody is un-conjugated
Application:	Western Blotting (WB), Immunohistochemistry (Paraffin-embedded Sections) (IHC (p)), Enzyme Immunoassay (EIA)

## Product Details

Immunogen:	EBI3 antibody was raised against a 16 amino acid peptide from near the carboxy terminus of human EBI3.
Isotype:	IgG
Specificity:	This antibody reacts to EBI3.
Purification:	Affinity chromatography purified via peptide column

## Target Details

Target:	EBI3 (IL-27b)
Alternative Name:	EBI3 / IL27B ( <a href="#">IL-27b Products</a> )

## Target Details

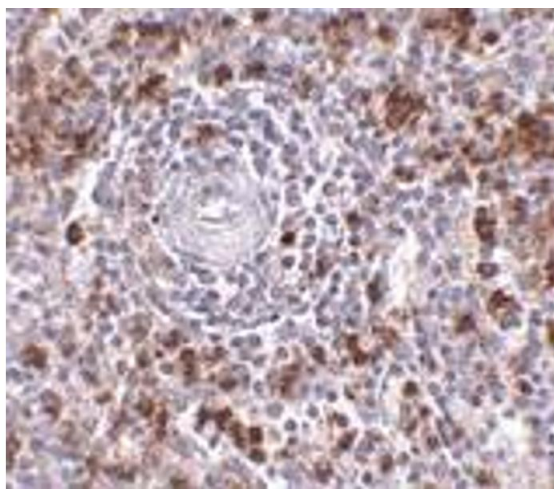
Target Type:	Viral Protein
Background:	<p>EBI3 is a subunit in two distinct heterodimeric cytokines: interleukin-27 (IL-27) and IL-35 (1-3). Like interleukin-23 (IL-23), IL-27 is a recently discovered member of the IL-6/IL-12 family of proinflammatory and immunoregulatory cytokines. It exists as a heterodimer composed of the p40-related protein EBI3 and an IL-12 p35-related protein termed p28. IL-27 is produced after activation by antigen-presenting cells and induces proliferation of naive but not memory CD4+ T-cells. It acts by binding to its receptor WSX-1 (also known as TCCR) and gp130 which results in the activation of a Jak/STAT signaling cascade, suggesting the IL-27 is involved in the regulation of immune processes. It has been suggested that IL-27 can also be used as a therapeutic agent against cancer as it can also induce tumor-specific anti-tumor activity mediated through CD8+ T-cells, IFN-g, and T-bet. IL-35 is composed of EBI3 and the p35 subunit of IL-12 and has been reported to have therapeutic effects against collagen-induced arthritis by expanding the population of regulatory T cells and suppressing Th17 cells. At least two isoform of EBI3 are known to exist. Synonyms: EBV-induced gene 3 protein, Epstein-Barr virus-induced gene 3 protein, IL-27 subunit beta, IL-27B, Interleukin-27 subunit beta</p>
Gene ID:	10148
NCBI Accession:	<a href="#">NP_005746</a>
UniProt:	<a href="#">Q14213</a>

## Application Details

Application Notes:	<p>ELISA. Western Blot: 1 - 2 µg/mL. Immunohistochemistry.</p> <p>Other applications not tested.</p> <p>Optimal dilutions are dependent on conditions and should be determined by the user.</p>
Restrictions:	For Research Use only

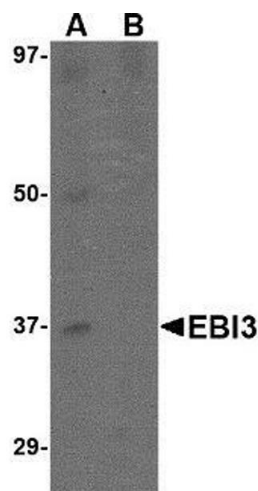
## Handling

Buffer:	PBS containing 0.02 % sodium azide.
Preservative:	Sodium azide
Precaution of Use:	This product contains sodium azide: a POISONOUS AND HAZARDOUS SUBSTANCE which should be handled by trained staff only.
Storage:	4 °C
Storage Comment:	Store the antibody undiluted at 2-8 °C.



Immunohistochemistry (Paraffin-embedded Sections)

**Image 1.** Immunohistochemistry of EBI3 in human spleen tissue with EBI3 antibody at 2.5 µg/ml.



Western Blotting

**Image 2.** Western blot analysis of EBI3 in K562 lysate with AP30306PU-N EBI3 antibody at 1 µg/ml in (A) the absence and (B) the presence of blocking peptide.