

Datasheet for ABIN499786  
**anti-ELOVL6 antibody (N-Term)**[Go to Product page](#)

## 2 Images

## Overview

Quantity:	0.1 mg
Target:	ELOVL6
Binding Specificity:	N-Term
Reactivity:	Human, Mouse, Rat
Host:	Rabbit
Clonality:	Polyclonal
Conjugate:	This ELOVL6 antibody is un-conjugated
Application:	Western Blotting (WB), Immunohistochemistry (Paraffin-embedded Sections) (IHC (p)), Enzyme Immunoassay (EIA)

## Product Details

Immunogen:	ELOVL6 antibody was raised against a 16 amino acid peptide near the amino terminus of the human ELOVL6.
Isotype:	IgG
Specificity:	This antibody reacts to ELOVL6.
Purification:	Affinity Purified

## Target Details

Target:	ELOVL6
Alternative Name:	ELOVL6 ( <a href="#">ELOVL6 Products</a> )

## Target Details

**Background:** Lipogenesis is a key event in the energy storage system and is controlled by the transcription factor sterol regulatory element-binding protein (SREBP)-1. Elongation of very long chain fatty acids protein 6 (ELOVL6) is a member of fatty acyl-CoA elongase gene family that converts palmitic to stearic acid and it has been shown to be a target of SREBP-1, playing an important role in de novo synthesis of long-chain saturated and monosaturated fatty acids in conjunction with fatty acid synthase and stearoyl-CoA desaturase. ELOVL6 was predicted to be important for tissue fatty acid composition. Recent studies suggest that inhibition of this elongase could be a new therapeutic approach for ameliorating insulin resistance, diabetes and cardiovascular risks, even in the presence of a continuing state of obesity. Synonyms: Elongation of very long chain fatty acids protein 6, FACE, Fatty acyl-CoA elongase, LCE, Long-chain fatty-acyl elongase, hELO2

**Gene ID:** 79071

**NCBI Accession:** [NP\\_076995](#)

**UniProt:** [Q9H5J4](#)

## Application Details

**Application Notes:** ELISA. Western blot: 1 - 2 µg/mL. Immunohistochemistry.  
Other applications not tested.  
Optimal dilutions are dependent on conditions and should be determined by the user.

**Restrictions:** For Research Use only

## Handling

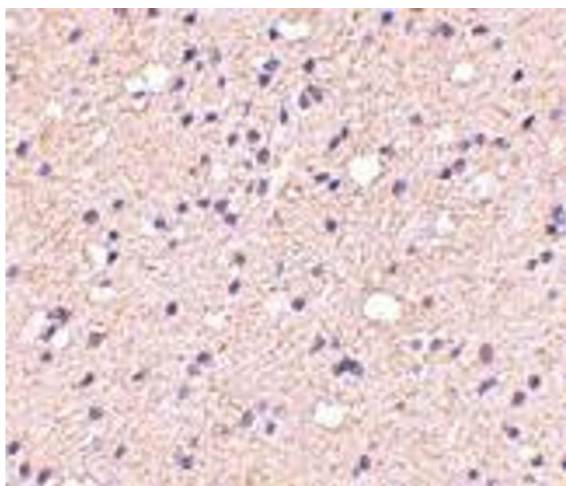
**Buffer:** PBS containing 0.02 % sodium azide.

**Preservative:** Sodium azide

**Precaution of Use:** This product contains sodium azide: a POISONOUS AND HAZARDOUS SUBSTANCE which should be handled by trained staff only.

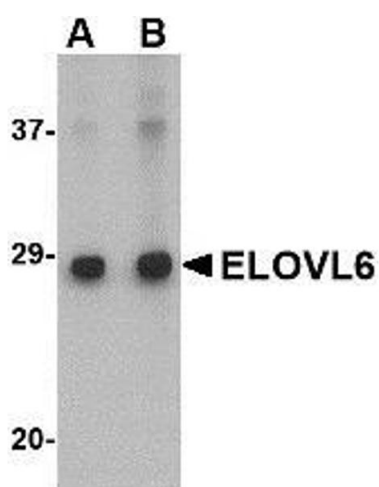
**Storage:** 4 °C

**Storage Comment:** Store the antibody undiluted at 2-8 °C.



#### Immunohistochemistry (Paraffin-embedded Sections)

**Image 1.** Immunohistochemistry of ELOVL6 in human brain with ELOVL6 antibody at 5 µg/ml.



#### Western Blotting

**Image 2.** Western blot analysis of ELOVL6 in Human brain tissue lysate with ELOVL6 antibody at (A) 1 and (B) 2 µg/ml.