

Datasheet for ABIN499788  
**anti-ELOVL7 antibody (N-Term)**[Go to Product page](#)

## 1 Image

## Overview

Quantity:	0.1 mg
Target:	ELOVL7
Binding Specificity:	N-Term
Reactivity:	Human, Mouse
Host:	Rabbit
Clonality:	Polyclonal
Conjugate:	This ELOVL7 antibody is un-conjugated
Application:	Western Blotting (WB), Immunohistochemistry (Paraffin-embedded Sections) (IHC (p)), Enzyme Immunoassay (EIA)

## Product Details

Immunogen:	ELOVL7 antibody was raised against a 15 amino acid peptide near the amino terminus of human ELOVL7.
Isotype:	IgG
Purification:	Affinity chromatography purified via peptide column

## Target Details

Target:	ELOVL7
Alternative Name:	ELOVL7 ( <a href="#">ELOVL7 Products</a> )
Background:	Lipogenesis is a key event in the energy storage system and is controlled by the transcription factor sterol regulatory element-binding protein (SREBP)-1. Elongation of very long chain fatty

## Target Details

acids protein 7 (ELOVL7) is a member of fatty acyl-CoA elongase gene family that elongates saturated very-long-chain fatty acids (SVLFA, C20:0-) and has been suggested to be involved in prostate cancer growth through saturated long-chain fatty acid metabolism. The metabolic pathways of long-chain fatty acids play an important role in the maintenance of membrane lipid composition and the generation of cell signaling precursor molecules such as eicosanoids and sphingosine-1 phosphate. Overexpression of ELOVL7 results in lipid accumulation in differentiated adipocytes, its expression is regulated by the microRNA miR-219. Synonyms: 3-keto acyl-CoA synthase ELOVL7, Elongation of very long chain fatty acids protein 7

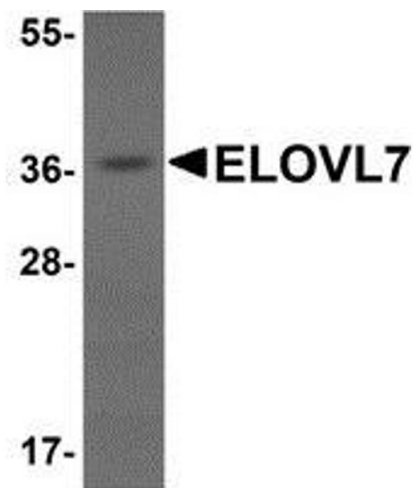
Gene ID:	79993
NCBI Accession:	<a href="#">NP_001098028</a>
UniProt:	<a href="#">A1L3X0</a>

## Application Details

Application Notes:	ELISA. Western blot: 1 - 2 µg/mL. Other applications not tested. Optimal dilutions are dependent on conditions and should be determined by the user.
Restrictions:	For Research Use only

## Handling

Concentration:	1.0 mg/mL
Buffer:	PBS containing 0.02 % sodium azide.
Preservative:	Sodium azide
Precaution of Use:	This product contains sodium azide: a POISONOUS AND HAZARDOUS SUBSTANCE which should be handled by trained staff only.
Handling Advice:	Avoid repeated freezing and thawing.
Storage:	-20 °C
Storage Comment:	Store the antibody (in aliquots) at -20 °C.



Western Blotting

**Image 1.** Western blot analysis of ELOVL7 in human liver tissue lysate with AP30312PU-N ELOVL7 antibody at 1  $\mu$ g/ml.