

Datasheet for ABIN499810
anti-TMC8 antibody (Center)

2 Images

[Go to Product page](#)

Overview

Quantity:	0.1 mg
Target:	TMC8
Binding Specificity:	Center
Reactivity:	Human, Mouse, Rat
Host:	Rabbit
Clonality:	Polyclonal
Conjugate:	This TMC8 antibody is un-conjugated
Application:	Western Blotting (WB), Immunohistochemistry (Paraffin-embedded Sections) (IHC (p)), Enzyme Immunoassay (EIA)

Product Details

Immunogen:	EVER2 antibody was raised against a 14 amino acid peptide from near the center of human EVER2.
Isotype:	IgG
Specificity:	This antibody reacts to EVER2.
Purification:	Affinity chromatography purified via peptide column

Target Details

Target:	TMC8
Alternative Name:	TMC8 (TMC8 Products)

Target Details

Background: Epidermodysplasia verruciformis (EV) is an autosomal recessive genodermatosis associated with a high risk of skin cancers resulting from a high susceptibility to infection by specific human papillomaviruses. Mutations in two homologous genes EVER1 and EVER2 cause the majority of EV cases. These two proteins form a complex and interact with the zinc transporter ZnT-1 in the endoplasmic reticulum. Cells lacking EVER2 accumulated higher levels of zinc in the nucleolus and nucleus compare to those cells with an intact EVER2 gene, indicating that one role of EVER2 is to regulate the intracellular distribution of zinc. At least three isoforms of EVER2 are known to exist, this antibody will only recognize the larger isoform. EVER2 has no cross-reactivity to EVER1. Synonyms: EVER2, EVIN2, Epidermodysplasia verruciformis protein 2, Transmembrane channel-like protein 8

Gene ID: 147138

UniProt: [Q8IU68](#)

Application Details

Application Notes: ELISA. Western Blot: 1 - 2 µg/mL. Immunohistochemistry.
Other applications not tested.
Optimal dilutions are dependent on conditions and should be determined by the user.

Restrictions: For Research Use only

Handling

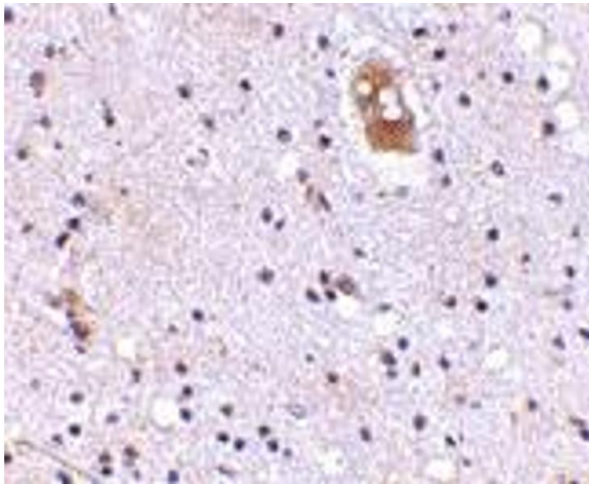
Buffer: PBS containing 0.02 % sodium azide.

Preservative: Sodium azide

Precaution of Use: This product contains sodium azide: a POISONOUS AND HAZARDOUS SUBSTANCE which should be handled by trained staff only.

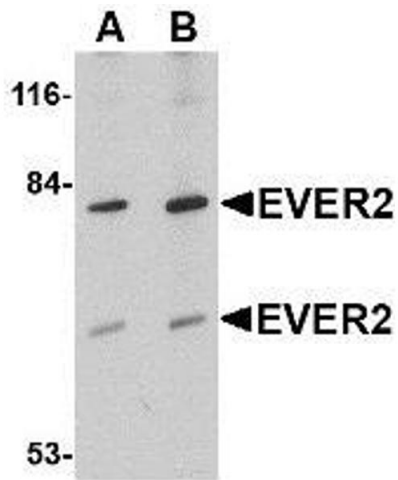
Storage: 4 °C

Storage Comment: Store the antibody undiluted at 2-8 °C.



Immunohistochemistry (Paraffin-embedded Sections)

Image 1. Immunohistochemistry of EVER2 in human brain with EVER2 antibody at 5 µg/ml.



Western Blotting

Image 2. Western blot analysis of EVER2 in Jurkat cell lysate with AP30323PU-N EVER2 antibody at (A) 1 and (B) 2 µg/ml.