

Datasheet for ABIN499814
anti-FEM1B antibody (C-Term)[Go to Product page](#)

2 Images

Overview

Quantity:	0.1 mg
Target:	FEM1B
Binding Specificity:	C-Term
Reactivity:	Human, Rat, Mouse
Host:	Rabbit
Clonality:	Polyclonal
Conjugate:	This FEM1B antibody is un-conjugated
Application:	Western Blotting (WB), Immunohistochemistry (Paraffin-embedded Sections) (IHC (p)), Enzyme Immunoassay (EIA)

Product Details

Immunogen:	Human F1A alpha Peptide
Isotype:	IgG
Specificity:	F1A alpha antibody was raised against a peptide corresponding to amino acids 609 to 622 of human F1A alpha. This sequence is identical to the corresponding sequence of mouse FEM1b .
Purification:	Affinity chromatography purified via peptide column

Target Details

Target:	FEM1B
Alternative Name:	FEM1B (FEM1B Products)

Target Details

Background: Fas and tumor necrosis factor receptor 1 (TNFR1) are two prototype members in the death receptor family. A novel protein that associates with the intracellular domains of Fas and TNFR1 was recently identified and designated F1Aalpha and FEM1b (1,2). F1Aalpha/FEM1beta is the homologue of *C. elegans* sex determining protein FEM-1 (1,2). FEM-1/F1Aalpha is cleaved by CED-3 and caspase (3). FEM-1/F1Aalpha associates with CED-4 and its mammalian homologue Apaf-1 (3). Overexpression of F1Aalpha induces apoptosis. F1Aalpha is therefore a novel member of the death receptor associated protein that mediates apoptosis. F1Aalpha is expressed in a variety of human and mouse tissues (1,2) Synonyms: F1A-alpha, F1AA, FEM1-beta, Fem-1-like death receptor-binding protein alpha, KIAA0396, Protein fem-1 homolog B

Gene ID: 10116

UniProt: [Q9UK73](#)

Application Details

Application Notes: ELISA. Western Blot: 0.5 to 1 µg/mL. An approximately 70 kDa band can be detected.
Immunohistochemistry.
Other applications not tested.
Optimal dilutions are dependent on conditions and should be determined by the user.

Restrictions: For Research Use only

Handling

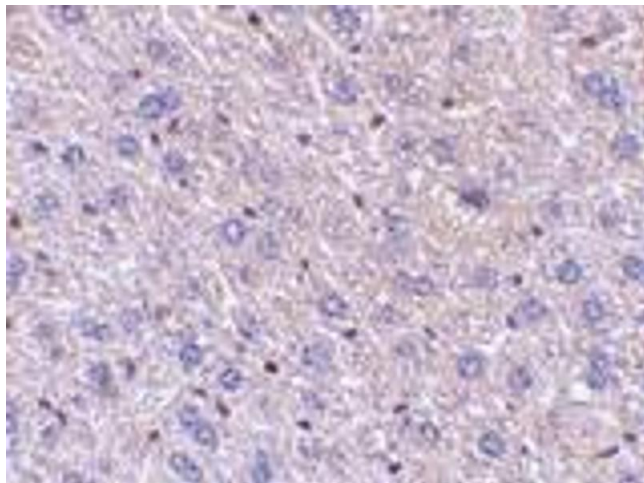
Buffer: PBS containing 0.02 % sodium azide.

Preservative: Sodium azide

Precaution of Use: This product contains sodium azide: a POISONOUS AND HAZARDOUS SUBSTANCE which should be handled by trained staff only.

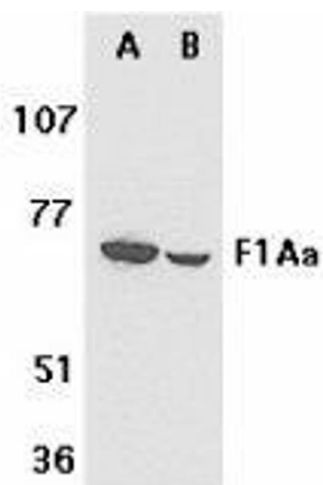
Storage: 4 °C

Storage Comment: Store the antibody undiluted at 2-8 °C.



Immunohistochemistry (Paraffin-embedded Sections)

Image 1. Immunohistochemistry of F1Aα in mouse liver tissue with F1Aα antibody at 5 µg/ml.



Western Blotting

Image 2. Western blot analysis of F1A alpha in mouse (A) and rat (B) liver tissue lysates with AP30325PU-N F1A alpha antibody at 1 µg/ml.