

Datasheet for ABIN499818  
**anti-FAF1 antibody (C-Term)**

## 2 Images

[Go to Product page](#)

## Overview

Quantity:	0.1 mg
Target:	FAF1
Binding Specificity:	C-Term
Reactivity:	Human, Mouse, Rat
Host:	Rabbit
Clonality:	Polyclonal
Conjugate:	This FAF1 antibody is un-conjugated
Application:	Western Blotting (WB), Immunohistochemistry (Paraffin-embedded Sections) (IHC (p)), Enzyme Immunoassay (EIA)

## Product Details

Immunogen:	FAF1 antibody was raised against a 19 amino acid peptide from near the carboxy terminus of human FAF1.
Isotype:	IgG
Specificity:	This antibody reacts to FAF1.
Purification:	Affinity chromatography purified via peptide column

## Target Details

Target:	FAF1
Alternative Name:	FAF1 ( <a href="#">FAF1 Products</a> )

## Target Details

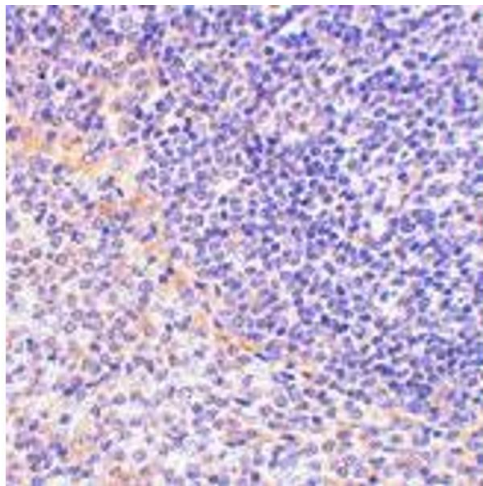
Background:	<p>Fas-associated protein 1 (FAF1) was initially identified as a Fas-binding pro-apoptotic protein that is component of the death-inducing signaling complex in Fas-mediated apoptosis (1). FAF1 can also induce apoptosis in the absence of extrinsic death signals when overexpressed although it does not contain typical death motifs such as the death domain, death effector domain, and caspase recruitment domain (1,2). Overexpression of FAF1 also decreases the basal level of NF-kappaB activity in transfected 293 cells, inhibits NF-kappaB activity induced by TNF-alpha, IL-1beta and lipopolysaccharide, and prevents NF-kappaB translocation to the nucleus (3), suggesting that another role of FAF1 is to negatively regulate the activity of NF-kappaB. FAF1 can also interact with the inflammatory signaling PYRIN-containing Apaf-1-like proteins (PYPAFs, also called NALPs) such as PYPAF1, PYPAF2 (NALP2), and PYPAF7, suggesting FAF1 may also be involved in the inflammation pathway (4). Multiple differentially spliced isoforms of FAF1 are known to exist. Synonyms: CGI-03, FAS-associated factor 1, UBX domain-containing protein 12, UBX domain-containing protein 3A, UBXD12, UBXN3A</p>
Gene ID:	11124
NCBI Accession:	<a href="#">NP_008982</a>
UniProt:	<a href="#">Q9UNN5</a>
Pathways:	<a href="#">Maintenance of Protein Location</a>

## Application Details

Application Notes:	<p>ELISA. Western Blot: 1 - 2 µg/mL. Immunohistochemistry.</p> <p>Other applications not tested.</p> <p>Optimal dilutions are dependent on conditions and should be determined by the user.</p>
Restrictions:	For Research Use only

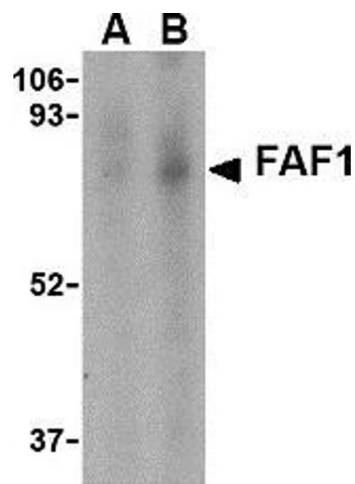
## Handling

Buffer:	PBS containing 0.02 % sodium azide.
Preservative:	Sodium azide
Precaution of Use:	This product contains sodium azide: a POISONOUS AND HAZARDOUS SUBSTANCE which should be handled by trained staff only.
Storage:	4 °C
Storage Comment:	Store the antibody undiluted at 2-8 °C.



Immunohistochemistry (Paraffin-embedded Sections)

**Image 1.** Immunohistochemistry of FAF1 in rat spleen tissue with FAF1 antibody at 2.5 µg/ml.



Western Blotting

**Image 2.** Western blot analysis of FAF1 in Jurkat cell lysate with AP30327PU-N FAF1 antibody at (A) 1 and (B) 2 µg/ml.