



[Go to Product page](#)

Datasheet for ABIN499840  
**anti-FKBP15 antibody (N-Term)**

2 Images

Overview

Quantity:	0.1 mg
Target:	FKBP15
Binding Specificity:	N-Term
Reactivity:	Human, Mouse, Rat
Host:	Rabbit
Clonality:	Polyclonal
Conjugate:	This FKBP15 antibody is un-conjugated
Application:	Western Blotting (WB), Immunohistochemistry (Paraffin-embedded Sections) (IHC (p)), Enzyme Immunoassay (EIA)

Product Details

Immunogen:	FKBP15 antibody was raised against a 15 amino acid peptide from near the amino terminus of human FKBP15.
Isotype:	IgG
Specificity:	This antibody reacts to FKBP15.
Purification:	Affinity chromatography purified via peptide column

Target Details

Target:	FKBP15
Alternative Name:	FKBP15 ( <a href="#">FKBP15 Products</a> )

## Target Details

---

**Background:** FKBP15, also known as FKBP133, is a member of the FK506-binding protein family, a group of proteins initially identified as immunophilins, targets for the immunosuppressant drugs FK506 and Rapamycin. FKBP15 is expressed in the developing nervous system and contains a domain similar to Wiskott-Aldrich syndrome protein homology region 1 (WH1) in addition to the FK506-binding protein motif. FKBP15 is distributed along the axonal shafts and partially co-localizes with F-actin in the growth cones of dorsal root ganglion neurons, overexpression of FKBP15 resulted in the number of filopodia in transfected neurons, suggesting that FKBP15 modulates growth cone behavior. FKBP15 has also been shown to associate with both microtubules and the actin filament systems and disruption of its expression by RNAi resulted in delayed transport of early endosomes in HeLa cells indicating that FKBP15 is also involved in the transport of early endosomes. At least three isoforms of FKBP15 are known to exist. Synonyms: 133 kDa FK506-binding protein, FK506-binding protein 15, FKBP133, KIAA0674, WAFL, WASP and FKBP-like

---

**Gene ID:** 23307

---

**NCBI Accession:** [NP\\_056073](#)

---

**UniProt:** [Q5T1M5](#)

---

**Pathways:** [SARS-CoV-2 Protein Interactome](#)

## Application Details

---

**Application Notes:** ELISA. Western Blot: 1 - 2 µg/mL. Immunohistochemistry.  
Other applications not tested.  
Optimal dilutions are dependent on conditions and should be determined by the user.

---

**Restrictions:** For Research Use only

## Handling

---

**Buffer:** PBS containing 0.02 % sodium azide.

---

**Preservative:** Sodium azide

---

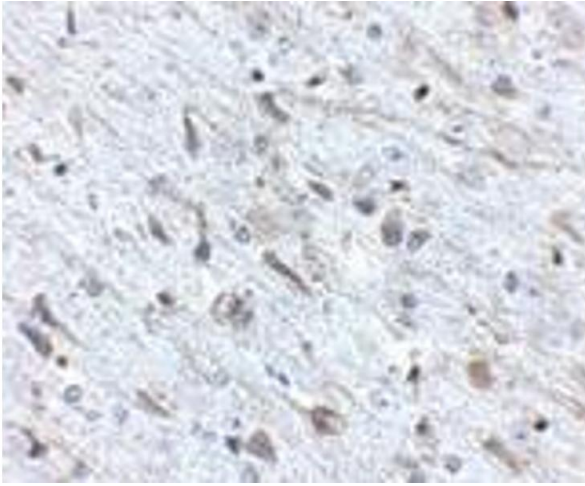
**Precaution of Use:** This product contains sodium azide: a POISONOUS AND HAZARDOUS SUBSTANCE which should be handled by trained staff only.

---

**Storage:** 4 °C

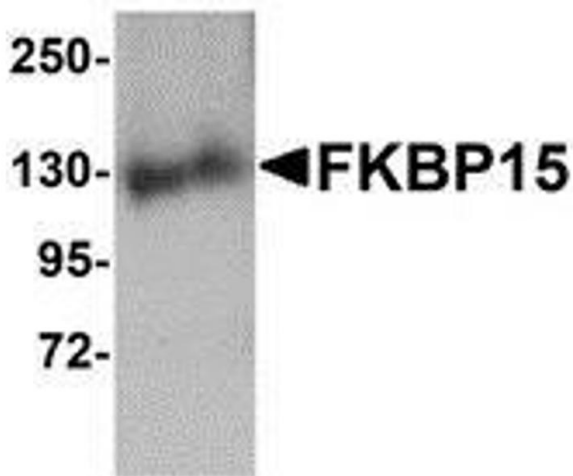
---

**Storage Comment:** Store the antibody undiluted at 2-8 °C.



#### Immunohistochemistry (Paraffin-embedded Sections)

**Image 1.** Immunohistochemistry of FKBP15 in mouse brain tissue with FKBP15 antibody at 2.5 µg/ml.



#### Western Blotting

**Image 2.** Western blot analysis of FKBP15 in 3T3 cell lysate with AP30338PU-N FKBP15 antibody at 1 µg/ml.