

Datasheet for ABIN499883

anti-GFRA1 antibody (Intermediate Domain)[Go to Product page](#)**2** Images

Overview

Quantity:	0.1 mg
Target:	GFRA1
Binding Specificity:	Intermediate Domain
Reactivity:	Human, Mouse, Rat
Host:	Rabbit
Clonality:	Polyclonal
Conjugate:	This GFRA1 antibody is un-conjugated
Application:	Western Blotting (WB), Immunohistochemistry (Paraffin-embedded Sections) (IHC (p)), Enzyme Immunoassay (EIA)

Product Details

Immunogen:	Human GFR alpha 1 (Intermediate Domain) Peptide
Isotype:	IgG
Specificity:	GFR alpha 1 antibody was raised against a peptide corresponding to amino acids 369 to 382 of human GFR alpha 1.
Purification:	DEAE Chromatography

Target Details

Target:	GFRA1
Alternative Name:	GFRA1 / GDNFR-alpha (GFRA1 Products)

Target Details

Background: Glial cell line-derived neurotrophic factor (GDNF) is a potent survival factor for central and peripheral neurons and is essential for the development of kidneys and the enteric nerves system. Physiological responses to GDNF require the presence of a novel glycosylphosphatidylinositol linked protein GDNFR α , which is a cell surface receptor for GDNF. The cDNAs encoding GDNFR α from human, rat, chicken and mouse have been cloned recently. GDNFR α was also termed Ret ligand 1 (RETL1) or TGF-beta-related neurotrophic factor receptor 1 (TrnR1) and nominated as GFR α -1 recently. GFR α -1 binds GDNF specifically and mediates activation of the Ret protein tyrosine kinase (PTK). Thus, GDNF, GFR α and the Ret PTK form a complex to transduce GDNF signal and to mediate GDNF function. Synonyms: GDNF family receptor alpha-1, GDNF receptor alpha, GDNFR α , GFR-alpha-1, RET ligand 1, RETL1, TGF-beta-related neurotrophic factor receptor 1, TRNR1

Gene ID: 2674

UniProt: [P56159](#)

Application Details

Application Notes: ELISA. Western Blot. Immunohistochemistry.
Other applications not tested.
Optimal dilutions are dependent on conditions and should be determined by the user.

Restrictions: For Research Use only

Handling

Concentration: 1.0 mg/mL

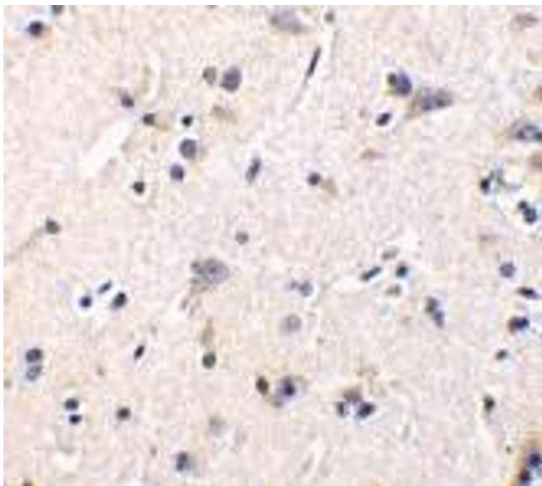
Buffer: PBS containing 0.02 % sodium azide.

Preservative: Sodium azide

Precaution of Use: This product contains sodium azide: a POISONOUS AND HAZARDOUS SUBSTANCE which should be handled by trained staff only.

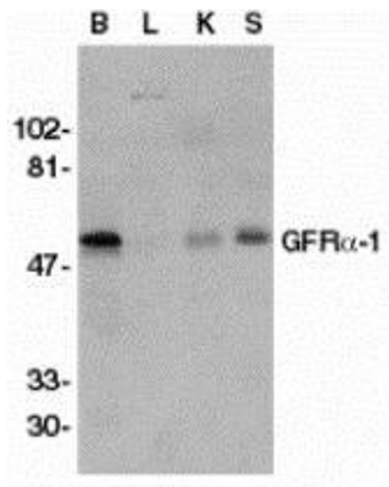
Storage: 4 °C

Storage Comment: Store the antibody undiluted at 2-8 °C.



Immunohistochemistry (Paraffin-embedded Sections)

Image 1. Immunohistochemistry of GFR alpha 1 in human brain tissue with GFR alpha 1 antibody at 1 µg/ml.



Western Blotting

Image 2. Western blot analysis of GFR alpha 1 in crude membrane fractions of human brain (B), liver (L), kidney (K), and spleen (S), respectively, with AP30361PU-N GFR alpha 1 antibody at 1/500 dilution.