



Datasheet for ABIN499885  
**anti-GFRA2 antibody (Middle Region)**



[Go to Product page](#)

2 Images

Overview

Quantity:	0.1 mg
Target:	GFRA2
Binding Specificity:	Middle Region
Reactivity:	Human, Mouse, Rat
Host:	Rabbit
Clonality:	Polyclonal
Conjugate:	This GFRA2 antibody is un-conjugated
Application:	Western Blotting (WB), Immunofluorescence (IF), Enzyme Immunoassay (EIA)

Product Details

Immunogen:	Human GFR alpha 2 Peptide
Isotype:	IgG
Specificity:	GFR alpha 2 antibody was raised against a peptide corresponding to amino acids 377 to 391 of human GFR alpha 2.
Purification:	DEAE

Target Details

Target:	GFRA2
Alternative Name:	GFRA2 / GDNFR-beta ( <a href="#">GFRA2 Products</a> )
Background:	Members of the glial cell line-derived neurotrophic factor (GDNF) family, including GDNF and

## Target Details

---

neurturin (NTN), play key roles in the control of vertebrate neuron survival and differentiation. Physiological responses to NTN require the presence of a novel glycosylphosphatidylinositol linked protein NTN $\alpha$ , which is a cell surface receptor for NTN. The cDNAs encoding NTN $\alpha$  from human, rat, chicken, and mouse have been cloned recently. NTN $\alpha$  was also termed GDNFR $\beta$ , Ret ligand 2 (RETL2) or TGF $\beta$ -related neurotrophic factor receptor 2 (TrnR2) and nominated as GFR $\alpha$ -2 recently. GFR $\alpha$ -2 binds NTN and mediates activation of RET receptor tyrosine kinase by both NTN and GDNF. Thus, NTN, GFR $\alpha$ -2, and the Ret PTK form a complex to transduce NTN signal and to mediate NTN function. Synonyms: GDNF family receptor  $\alpha$ -2, GDNF receptor  $\beta$ , GDNFR $\beta$ , GFR- $\alpha$ -2, Neurturin receptor  $\alpha$ , RET ligand 2, RETL2, TGF- $\beta$ -related neurotrophic factor receptor 2, TRNR2

---

Gene ID: 2675

---

UniProt: [O00451](#)

## Application Details

---

Application Notes: ELISA. Western Blot: 1/1000 to 1/2000. A 52 kDa band should be detected.  
Immunocytochemistry.  
Other applications not tested.  
Optimal dilutions are dependent on conditions and should be determined by the user.

---

Restrictions: For Research Use only

## Handling

---

Concentration: 0.5 mg/mL

---

Buffer: PBS containing 0.02 % sodium azide.

---

Preservative: Sodium azide

---

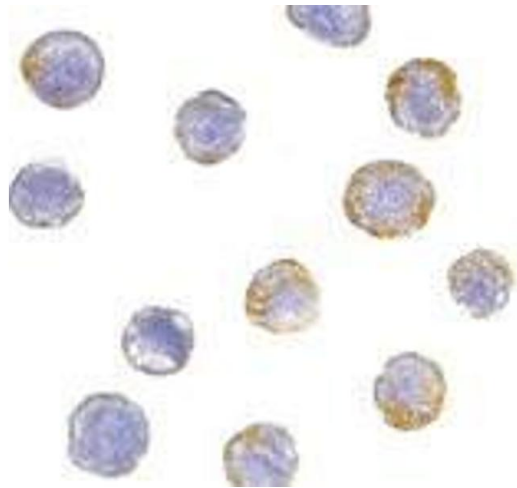
Precaution of Use: This product contains sodium azide: a POISONOUS AND HAZARDOUS SUBSTANCE which should be handled by trained staff only.

---

Storage: 4 °C

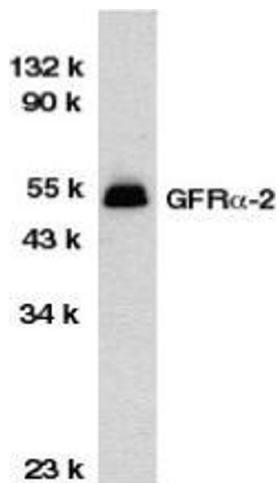
---

Storage Comment: Store the antibody undiluted at 2-8 °C.



### Immunofluorescence

**Image 1.** Immunocytochemistry of GFR alpha 2 in HeLa cells with AP30362PU-N GFR alpha 2 antibody at 5 µg/ml.



### Western Blotting

**Image 2.** Western blot analysis of GFR alpha 2 in HeLa total cell lysate with AP30362PU-N GFR alpha 2 antibody at 1/1000 dilution.