

Datasheet for ABIN499898

**anti-GNPDA2 antibody (C-Term)****2** Images[Go to Product page](#)

## Overview

Quantity:	0.1 mg
Target:	GNPDA2
Binding Specificity:	C-Term
Reactivity:	Human, Mouse
Host:	Rabbit
Clonality:	Polyclonal
Conjugate:	This GNPDA2 antibody is un-conjugated
Application:	Western Blotting (WB), Immunofluorescence (IF), Enzyme Immunoassay (EIA)

## Product Details

Immunogen:	GNPDA2 antibody was raised against an 8 amino acid peptide near the carboxy terminus of human GNPDA2.
Isotype:	IgG
Specificity:	This antibody reacts to GNPDA2.
Purification:	Affinity chromatography purified via peptide column

## Target Details

Target:	GNPDA2
Alternative Name:	GNPDA2 ( <a href="#">GNPDA2 Products</a> )
Background:	Glucosamine-6-phosphate deaminase (GNPDA) is an allosteric enzyme that catalyzes the

## Target Details

reversible conversion of D-glucosamine-6-phosphate into D-fructose-6-phosphate and ammonium. GNPDA2 is the second mammalian glucosamine-6-phosphate deaminase discovered, and is closer in structure and activity to the E. coli enzyme than GNPDA1. GNPDA1 possesses greater affinity for ammonium than either GNPDA2 or the E. coli enzyme suggesting that the forward reaction of D-glucosamine-6-phosphate into D-fructose-6-phosphate and ammonium is catalyzed at a slower rate than GNPDA2. GNPDA2 antibody is predicted to not cross-react with GNPDA1. Synonyms: GlcN6P deaminase 2, Glucosamine-6-phosphate deaminase 2, Glucosamine-6-phosphate isomerase 2, Glucosamine-6-phosphate isomerase SB52, SB52

Gene ID: 132789

NCBI Accession: [NP\\_612208](#)

UniProt: [Q8TDQ7](#)

## Application Details

Application Notes: ELISA. Western Blot: 1 - 2 µg/mL. Immunocytochemistry.  
Other applications not tested.  
Optimal dilutions are dependent on conditions and should be determined by the user.

Restrictions: For Research Use only

## Handling

Buffer: PBS containing 0.02 % sodium azide.

Preservative: Sodium azide

Precaution of Use: This product contains sodium azide: a POISONOUS AND HAZARDOUS SUBSTANCE which should be handled by trained staff only.

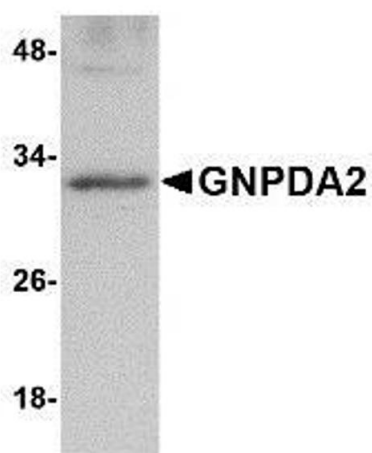
Storage: 4 °C

Storage Comment: Store the antibody undiluted at 2-8 °C.



#### Immunofluorescence

**Image 1.** Immunocytochemistry of GNPDA2 in 293 cells with AP30369PU-N GNPDA2 antibody at 4 µg/ml.



#### Western Blotting

**Image 2.** Western blot analysis of GNPDA2 in human kidney lysate with AP30369PU-N GNPDA2 antibody at 1 µg/ml.