

Datasheet for ABIN499902
anti-GOLM1 antibody (Center)



[Go to Product page](#)

2 Images

Overview

Quantity:	0.1 mg
Target:	GOLM1
Binding Specificity:	Center
Reactivity:	Human, Mouse, Rat
Host:	Rabbit
Clonality:	Polyclonal
Conjugate:	This GOLM1 antibody is un-conjugated
Application:	Western Blotting (WB), Immunohistochemistry (Paraffin-embedded Sections) (IHC (p)), Enzyme Immunoassay (EIA)

Product Details

Immunogen:	GOLPH2 antibody was raised against an 18 amino acid peptide from near the center of human GOLPH2.
Isotype:	IgG
Purification:	Affinity chromatography purified via peptide column

Target Details

Target:	GOLM1
Alternative Name:	Golgi Membrane Protein 1 / GOLM1 (GOLM1 Products)
Background:	GOLPH2, also known as GOLM1, is a Golgi phosphoprotein that has a short cytoplasmic N-terminal domain, a membrane spanning region, and a longer C-terminal domain. It was initially

Target Details

identified as a possible marker for Alzheimer's disease, although later studies have demonstrated that the GOLPH2 gene does not contribute to risk of this disease. GOLPH2 expression has been reported higher in prostate cancer tissues compared to normal prostate tissue, suggesting that GOLPH2 can be used as an additional positive marker for tissue-based diagnosis of prostate cancer. It has been suggested that GOLPH2 expression in hepatocellular carcinomas (HCCs) and serum may also serve as tumor markers for HCCs. Synonyms: C9orf155, GOLPH2, Golgi marker, Golgi membrane protein GP73, Golgi phosphoprotein 2, PSEC0242

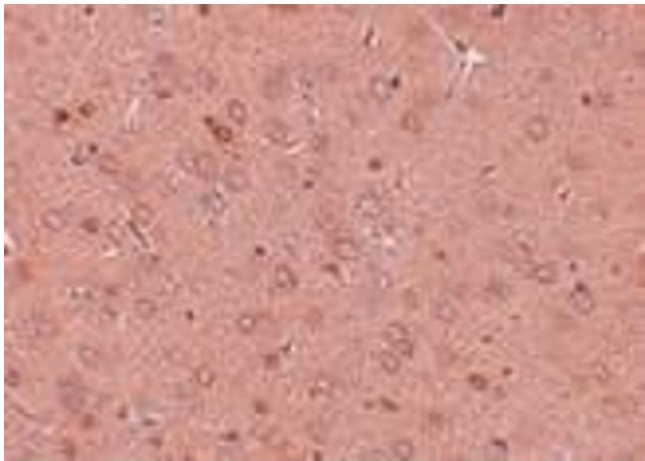
Gene ID:	51280
NCBI Accession:	NP_057632
UniProt:	Q8NBJ4

Application Details

Application Notes:	ELISA. Western Blot: 0.25 - 0.5 µg/mL. Immunohistochemistry. Other applications not tested. Optimal dilutions are dependent on conditions and should be determined by the user.
Restrictions:	For Research Use only

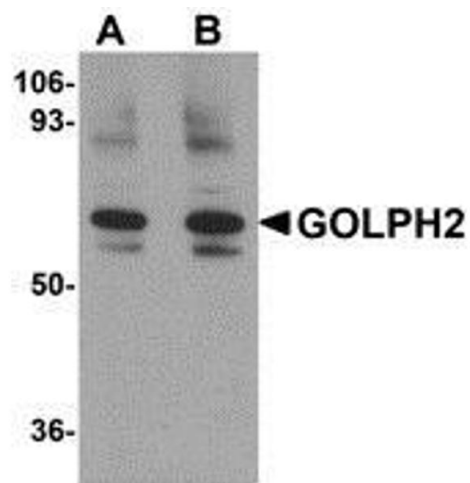
Handling

Concentration:	1.0 mg/mL
Buffer:	PBS containing 0.02 % sodium azide.
Preservative:	Sodium azide
Precaution of Use:	This product contains sodium azide: a POISONOUS AND HAZARDOUS SUBSTANCE which should be handled by trained staff only.
Handling Advice:	Avoid repeated freezing and thawing.
Storage:	-20 °C
Storage Comment:	Store the antibody (in aliquots) at -20 °C.



Immunohistochemistry (Paraffin-embedded Sections)

Image 1. Immunohistochemistry of GOLPH2 in rat brain tissue with GOLPH2 antibody at 2.5 µg/ml.



Western Blotting

Image 2. Western blot analysis of GOLPH2 in rat brain tissue lysate with AP30371PU-N GOLPH2 antibody at (A) 0.25 and (B) 0.5 µg/ml.