

Datasheet for ABIN499916
anti-GP6 antibody (C-Term)

2 Images

[Go to Product page](#)

Overview

Quantity:	0.1 mg
Target:	GP6
Binding Specificity:	C-Term
Reactivity:	Human, Mouse, Rat
Host:	Rabbit
Clonality:	Polyclonal
Conjugate:	This GP6 antibody is un-conjugated
Application:	Western Blotting (WB), Immunohistochemistry (Paraffin-embedded Sections) (IHC (p)), Immunofluorescence (IF), Enzyme Immunoassay (EIA)

Product Details

Immunogen:	GPVI antibody was raised against a 15 amino acid peptide near the carboxy terminus of the human GPVI.
Isotype:	IgG
Specificity:	This antibody reacts to GPVI.
Purification:	Affinity chromatography purified via peptide column

Target Details

Target:	GP6
Alternative Name:	Platelet Glycoprotein VI (GP6 Products)

Target Details

Background:	Glycoprotein VI (GP6) is a 58kD platelet membrane glycoprotein that plays a crucial role in the collagen-induced activation and aggregation of platelets. It is uniquely expressed by cells of the megakaryocytic/platelet lineage, and is a member of the immunoglobulin gene superfamily, closely related to Fc receptor gamma chain (FcR) and natural killer receptors. Glycoprotein VI plays a key role in platelet procoagulant activity and subsequent thrombin and fibrin formation. This procoagulant function may contribute to arterial and venous thrombus formation. The signaling pathway involves the FcR, the Src kinases (likely Fyn/Lyn), the adapter protein LAT and leads to the activation of phospholipase C gamma2. GPVI deficiency can result in bleeding disorders. Further study should reveal the extent of GPVI involvement in thrombotic disease and allow the development of alternative anti-thrombotic compounds.Synonyms: GP6, GPVI, Glycoprotein 6
-------------	---

Gene ID:	51206
----------	-------

NCBI Accession:	NP_057447
-----------------	---------------------------

UniProt:	Q9HCN6
----------	------------------------

Application Details

Application Notes:	ELISA. Western Blot: 1 µg/mL. Immunohistochemistry. Other applications not tested. Optimal dilutions are dependent on conditions and should be determined by the user.
--------------------	--

Restrictions:	For Research Use only
---------------	-----------------------

Handling

Concentration:	1 mg/mL
----------------	---------

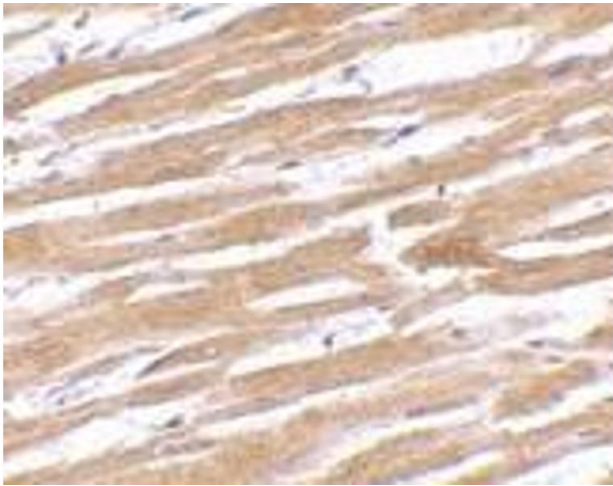
Buffer:	PBS containing 0.02 % sodium azide.
---------	-------------------------------------

Preservative:	Sodium azide
---------------	--------------

Precaution of Use:	This product contains sodium azide: a POISONOUS AND HAZARDOUS SUBSTANCE which should be handled by trained staff only.
--------------------	--

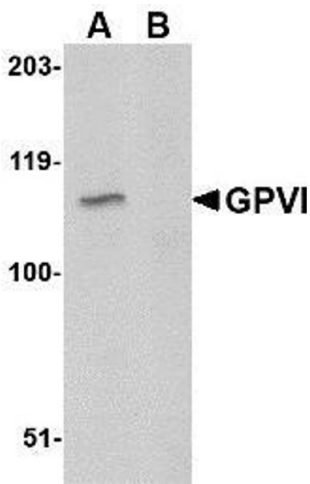
Storage:	4 °C
----------	------

Storage Comment:	Store the antibody undiluted at 2-8 °C.
------------------	---



Immunohistochemistry (Paraffin-embedded Sections)

Image 1. Immunohistochemistry of GPVI in human heart tissue with GPVI antibody at 10 µg/ml.



Western Blotting

Image 2. Western blot analysis of GPVI in A20 lysate with AP30378PU-N GPVI antibody at 1µg/ml in either the absence or (B) the presence of blocking peptide.