

Datasheet for ABIN499934
anti-GRTP1 antibody (N-Term)[Go to Product page](#)

2 Images

Overview

Quantity:	0.1 mg
Target:	GRTP1
Binding Specificity:	N-Term
Reactivity:	Human, Mouse, Rat
Host:	Rabbit
Clonality:	Polyclonal
Conjugate:	This GRTP1 antibody is un-conjugated
Application:	Western Blotting (WB), Immunofluorescence (IF), Enzyme Immunoassay (EIA)

Product Details

Immunogen:	GRTP1 antibody was raised against a 18 amino acid peptide from near the amino terminus of human GRTP1.
Isotype:	IgG
Purification:	Affinity chromatography purified via peptide column

Target Details

Target:	GRTP1
Alternative Name:	GRTP1 / TBC1D6 (GRTP1 Products)
Background:	Growth hormone regulated TBC protein 1 (GRTP1) was identified through microarray analysis as a gene whose expression is regulated by growth hormone (GH). It contains the TBC signature motif of GTPase activator proteins of Rab-like small GTPases. GRTP1 mRNA is

Target Details

expressed at highest levels in testes, and is also present in kidney, lung, liver, and intestine. Administration of GH to mice resulted in an increase in GRTP1 mRNA in testes, but a decrease of GRTP1 mRNA in kidney and liver. GRTP1 was identified as an HIV dependency factor (HDF), suggesting that GRTP1 may be an important drug target in HIV treatment. At least three isoforms of GRTP1 are known to exist, this antibody should recognize all isoforms. Synonyms: Growth hormone-regulated TBC protein 1, TBC1 domain family member 6

Gene ID: 79774

UniProt: [Q5TC63](#)

Application Details

Application Notes: ELISA. Western Blot: 1 - 2 µg/mL. Immunocytochemistry.
Other applications not tested.
Optimal dilutions are dependent on conditions and should be determined by the user.

Restrictions: For Research Use only

Handling

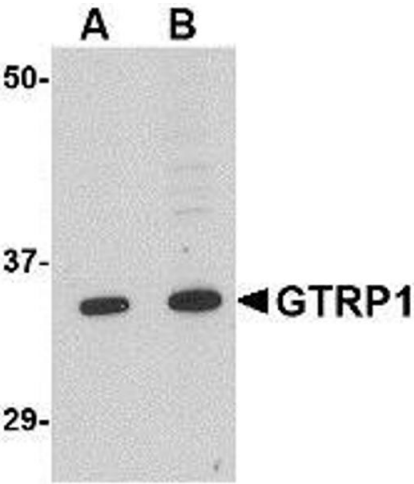
Buffer: PBS containing 0.02 % sodium azide.

Preservative: Sodium azide

Precaution of Use: This product contains sodium azide: a POISONOUS AND HAZARDOUS SUBSTANCE which should be handled by trained staff only.

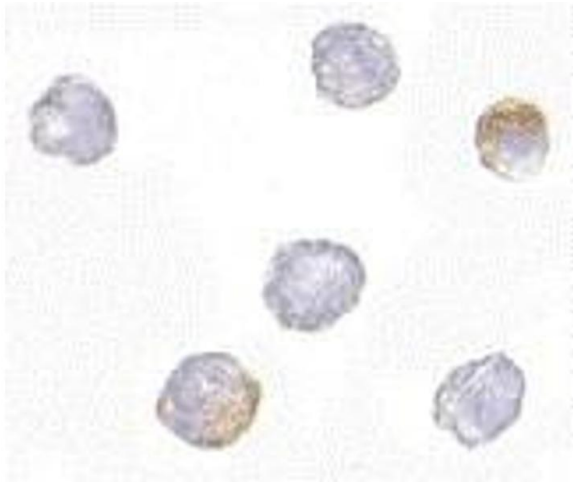
Storage: 4 °C

Storage Comment: Store the antibody undiluted at 2-8 °C.



Western Blotting

Image 1. Western blot analysis of GRTP1 in K562 cell lysate with AP30387PU-N GRTP1 antibody at (A) 1 and (B) 2 μ g/ml.



Immunofluorescence

Image 2. Immunocytochemistry of GRTP1 in K562 cells with AP30387PU-N GRTP1 antibody at 2.5 μ g/ml.