



[Go to Product page](#)

Datasheet for ABIN499954  
**anti-INSM2 antibody (C-Term)**

1 Image

Overview

Quantity:	0.1 mg
Target:	INSM2
Binding Specificity:	C-Term
Reactivity:	Human, Mouse, Rat
Host:	Rabbit
Clonality:	Polyclonal
Conjugate:	This INSM2 antibody is un-conjugated
Application:	Western Blotting (WB), Enzyme Immunoassay (EIA)

Product Details

Immunogen:	IA-6 antibody was raised against a 14 amino acid peptide from near the carboxy terminus of human IA-6.
Isotype:	IgG
Specificity:	This antibody reacts to IA-6.
Purification:	Affinity chromatography purified via peptide column

Target Details

Target:	INSM2
Alternative Name:	INSM2 / IA6 ( <a href="#">INSM2 Products</a> )
Background:	IA-6, also known as insulinoma-associated 2 or INSM2, is related to IA-1 (INSM1), a zinc-finger

## Target Details

---

factor that is expressed in the developing nervous system. While the exact function of IA-6 is not known, other related insulinoma-associated proteins such as IA-2 are major autoantigens in type 1 diabetes. The homology exhibited by IA-6 to IA-1 has led to speculation that IA-6 may also play a role in the regulation of gene transcription. Synonyms: Insulinoma-associated protein 2, Zinc finger protein IA-6

---

Gene ID: 84684

---

UniProt: [Q96T92](#)

## Application Details

---

Application Notes: ELISA. Western Blot: 1 - 2 µg/mL.  
Other applications not tested.  
Optimal dilutions are dependent on conditions and should be determined by the user.

---

Restrictions: For Research Use only

## Handling

---

Buffer: PBS containing 0.02 % sodium azide.

---

Preservative: Sodium azide

---

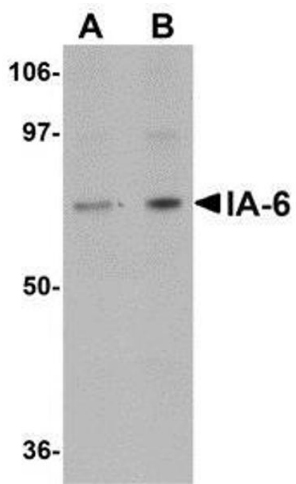
Precaution of Use: This product contains sodium azide: a POISONOUS AND HAZARDOUS SUBSTANCE which should be handled by trained staff only.

---

Storage: 4 °C

---

Storage Comment: Store the antibody undiluted at 2-8 °C.



### Western Blotting

**Image 1.** Western blot analysis of IA-6 in rat thymus tissue lysate with AP30397PU-N IA-6 antibody at (A) 1 and (B) 2  $\mu$ g/ml.