

Datasheet for ABIN500076
anti-KDM3B antibody (Center)[Go to Product page](#)

2 Images

Overview

Quantity:	0.1 mg
Target:	KDM3B
Binding Specificity:	Center
Reactivity:	Human, Mouse, Rat
Host:	Rabbit
Clonality:	Polyclonal
Conjugate:	This KDM3B antibody is un-conjugated
Application:	Western Blotting (WB), Immunohistochemistry (Paraffin-embedded Sections) (IHC (p)), Enzyme Immunoassay (EIA)

Product Details

Immunogen:	JMJD1B antibody was raised against a 20 amino acid peptide from near the center of human JMJD1B.
Isotype:	IgG
Specificity:	This antibody detects JMJD1B. It will not cross-react with JMJD1A or JMJD1C.
Cross-Reactivity (Details):	Species reactivity (tested): Human, mouse, rat
Purification:	Peptide affinity chromatography

Target Details

Target:	KDM3B
---------	-------

Target Details

Alternative Name:	JMJD1B / KDM3B (KDM3B Products)
Background:	<p>The jumonji domain containing 1B protein (JMJD1B) was originally discovered as a candidate for the myeloid leukemia tumor suppressor gene. Besides CD34+ cells and acute myeloid leukemia (AML) cell lines, JMJD1B mRNA is highly expressed in liver, heart, kidney, skeletal muscle, and placenta tissues. The JMJD1B gene is localized to a region of chromosome 5q31, which is frequently deleted in myeloid leukemias and myelodysplasias and expression of JMJD1B in a del(5q) cell line results in suppression of clonogenic growth suggesting that JMJD1B may function as a tumor suppressor. In contrast, JMJD1B gene copy number and mRNA expression level was increased in several non-small cell lung cancers indicating that the role of JMJD1B in cancer formation and progression is more complex than originally postulated. At least three isoforms of JMJD1B are known to exist. Synonyms: 5qNCA, C5orf7, JHDM2B, JmjC domain-containing histone demethylation protein 2B, Jumonji domain-containing protein 1B, KIAA1082, Lysine-specific demethylase 3B, Nuclear protein 5qNCA</p>
Gene ID:	51780
NCBI Accession:	NP_057688
UniProt:	Q7LBC6
Pathways:	Warburg Effect

Application Details

Application Notes:	<p>ELISA. Western blot: 1 - 2 µg/mL. Immunohistochemistry on paraffin sections.</p> <p>Other applications not tested.</p> <p>Optimal dilutions are dependent on conditions and should be determined by the user.</p>
Restrictions:	For Research Use only

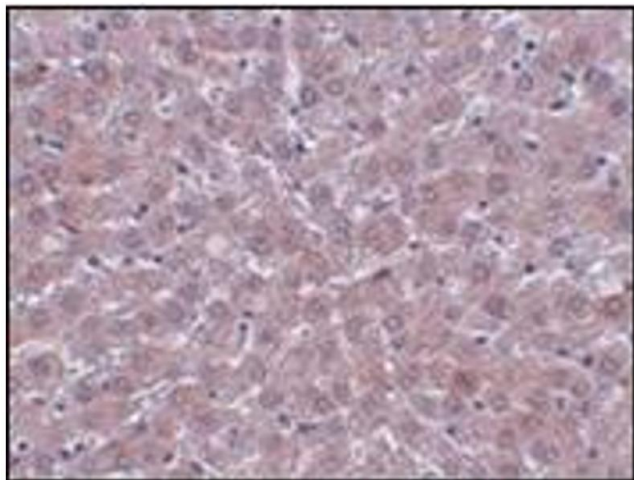
Handling

Buffer:	PBS containing 0.02 % sodium azide
Preservative:	Sodium azide
Precaution of Use:	This product contains sodium azide: a POISONOUS AND HAZARDOUS SUBSTANCE which should be handled by trained staff only.
Handling Advice:	Avoid repeated freezing and thawing.
Storage:	4 °C/-20 °C

Handling

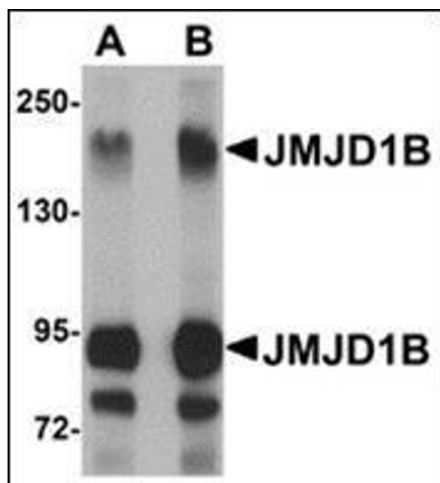
Storage Comment: Store at 2 - 8 °C for up to one month or (in aliquots) at -20 °C for longer.

Images



Immunohistochemistry (Paraffin-embedded Sections)

Image 1. Immunohistochemistry of JMJD1B in rat liver tissue with this product at 2.5 µg/ml.



Western Blotting

Image 2. Western blot analysis of JMJD1B in rat liver tissue lysate with this product at (A) 1 and (B) 2 µg/ml.