

Datasheet for ABIN500080  
**anti-KDM4A antibody (Center)**[Go to Product page](#)

## 2 Images

## Overview

Quantity:	0.1 mg
Target:	KDM4A
Binding Specificity:	Center
Reactivity:	Human, Mouse, Rat
Host:	Rabbit
Clonality:	Polyclonal
Application:	Western Blotting (WB), Immunohistochemistry (Paraffin-embedded Sections) (IHC (p)), Enzyme Immunoassay (EIA)

## Product Details

Immunogen:	JMJD2A antibody was raised against a 14 amino acid peptide from near the center of human JMJD2A.
Isotype:	IgG
Specificity:	This antibody detects JMJD2A.
Cross-Reactivity (Details):	Species reactivity (tested): Human, mouse, rat
Purification:	Peptide affinity chromatography

## Target Details

Target:	KDM4A
Alternative Name:	JMJD2A / KDM4A ( <a href="#">KDM4A Products</a> )

## Target Details

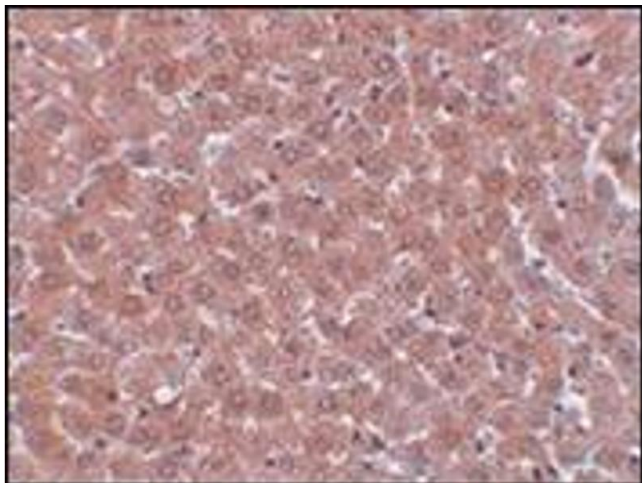
Background:	Members of the Jumonji domain 2 (JMJD2) family contain a JmjN domain, a JmjC domain, a JD2H domain, two TUDOR domains, and two PHD-type zinc fingers. The first member of this group, JMJD2A, is widely expressed in human tissues and cell lines and functions as a trimethylation-specific demethylase, converting specific trimethylated histone residues to the dimethylated form, and as a transcriptional repressor. JMJD2A can also form a complex with the androgen receptor (AR), a transcription factor that is pivotal for the development of prostate cancer. Overexpression of JMJD2A stimulates AR function and this stimulation is dependent on JMJD2A catalytic activity, suggesting that JMJD2A might be a critical protein with roles in cell proliferation and oncogenesis.Synonyms: JHDM3A, JMJD2, JmjC domain-containing histone demethylation protein 3A, Jumonji domain-containing protein 2A, KIAA0677, Lysine-specific demethylase 4A
Gene ID:	9682
UniProt:	<a href="#">O75164</a>
Pathways:	<a href="#">Warburg Effect</a>

## Application Details

Application Notes:	ELISA. Western blot: 1 - 2 µg/mL. Immunohistochemistry on paraffin sections. Other applications not tested. Optimal dilutions are dependent on conditions and should be determined by the user.
Restrictions:	For Research Use only

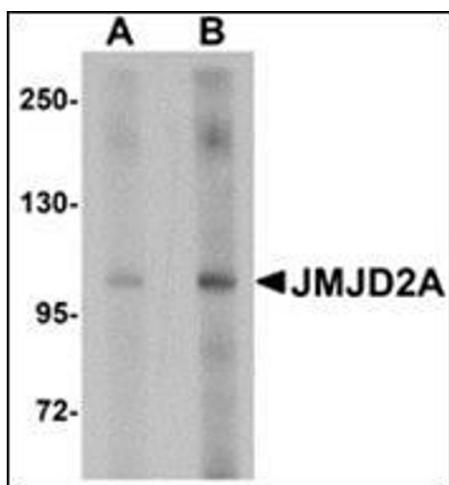
## Handling

Buffer:	PBS containing 0.02 % sodium azide
Preservative:	Sodium azide
Precaution of Use:	This product contains sodium azide: a POISONOUS AND HAZARDOUS SUBSTANCE which should be handled by trained staff only.
Handling Advice:	Avoid repeated freezing and thawing.
Storage:	4 °C/-20 °C
Storage Comment:	Store at 2 - 8 °C for up to one month or (in aliquots) at -20 °C for longer.



#### Immunohistochemistry (Paraffin-embedded Sections)

**Image 1.** Immunohistochemistry of JMJD2A in rat liver tissue with this product at 5 µg/ml.



#### Western Blotting

**Image 2.** Western blot analysis of JMJD2A in rat liver tissue lysate with this product at (A) 1 and (B) 2 µg/ml.