

Datasheet for ABIN500088
anti-JMJD6 antibody (N-Term)[Go to Product page](#)

2 Images

Overview

Quantity:	0.1 mg
Target:	JMJD6
Binding Specificity:	N-Term
Reactivity:	Human, Mouse, Rat
Host:	Rabbit
Clonality:	Polyclonal
Conjugate:	This JMJD6 antibody is un-conjugated
Application:	Western Blotting (WB), Immunohistochemistry (Paraffin-embedded Sections) (IHC (p)), Enzyme Immunoassay (EIA)

Product Details

Immunogen:	JMJD6 antibody was raised against a 15 amino acid peptide from near the amino terminus of human JMJD6.
Isotype:	IgG
Specificity:	This antibody detects JMJD6.
Cross-Reactivity (Details):	Species reactivity (tested): Human, mouse, rat
Purification:	Peptide affinity chromatography

Target Details

Target:	JMJD6
---------	-------

Target Details

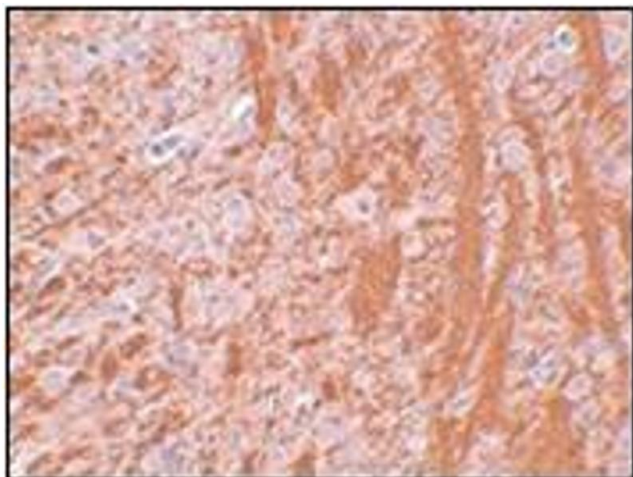
Alternative Name:	JMJD6 / PTDSR (JMJD6 Products)
Background:	<p>The jumonji domain-containing protein (JMJD) family is defined by the presence of the JmjC domain that is observed in several diverse species. JMJD6 was initially identified as a membrane protein that participates in phagocytosis but recent studies have shown that it has other functions when it is expressed in the cytosol and nucleus. JMJD6 is thought to play important roles in regulation of development and differentiation as knockdown experiments in mice resulted in neonatal lethality with severe defects in the morphology of numerous organs. JMJD6 also can catalyze the lysyl-hydroxylation of U2AF65, a protein involved with RNA splicing, suggesting that some of the functions attributed to JMJD6 may be due to its regulatory activity of RNA splicing.</p> <p>Synonyms: Histone arginine demethylase JMJD6, JmjC domain-containing protein 6, Jumonji domain-containing protein 6, KIAA0585, Phosphatidylserine receptor</p>
Gene ID:	23210
UniProt:	Q6NYC1

Application Details

Application Notes:	<p>ELISA. Western blot: 1 - 2 µg/mL. Immunohistochemistry on paraffin sections.</p> <p>Other applications not tested.</p> <p>Optimal dilutions are dependent on conditions and should be determined by the user.</p>
Restrictions:	For Research Use only

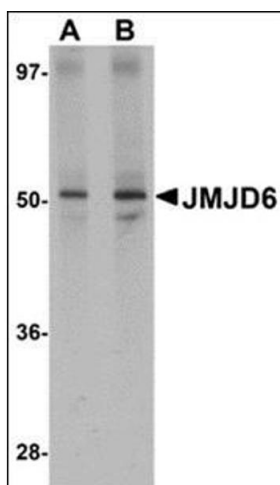
Handling

Buffer:	PBS containing 0.02 % sodium azide
Preservative:	Sodium azide
Precaution of Use:	This product contains sodium azide: a POISONOUS AND HAZARDOUS SUBSTANCE which should be handled by trained staff only.
Handling Advice:	Avoid repeated freezing and thawing.
Storage:	4 °C/-20 °C
Storage Comment:	Store at 2 - 8 °C for up to one month or (in aliquots) at -20 °C for longer.



Immunohistochemistry (Paraffin-embedded Sections)

Image 1. Immunohistochemistry of JMJD6 in rat brain tissue with this product at 2.5 µg/ml.



Western Blotting

Image 2. Western blot analysis of JMJD6 in human brain tissue lysate with this product at (A) 1 and (B) 2 µg/ml.