



[Go to Product page](#)

Datasheet for ABIN500104

## anti-Junctophilin 4 antibody (C-Term)

### 2 Images

#### Overview

Quantity:	0.1 mg
Target:	Junctophilin 4 (JPH4)
Binding Specificity:	C-Term
Reactivity:	Human, Mouse, Rat
Host:	Rabbit
Clonality:	Polyclonal
Conjugate:	This Junctophilin 4 antibody is un-conjugated
Application:	Western Blotting (WB), Immunohistochemistry (Paraffin-embedded Sections) (IHC (p)), Enzyme Immunoassay (EIA)

#### Product Details

Immunogen:	JPH4 antibody was raised against a 16 amino acid peptide near the carboxy terminus of human JPH4.
Isotype:	IgG
Specificity:	This antibody detects JPH4 at C-term.
Cross-Reactivity (Details):	Species reactivity (tested):Human, mouse, rat
Purification:	Peptide affinity chromatography

#### Target Details

Target:	Junctophilin 4 (JPH4)
---------	-----------------------

## Target Details

---

Alternative Name:	Junctophilin-4 / JPH4 ( <a href="#">JPH4 Products</a> )
Background:	Junctional complexes between the plasma membrane (PM) and endoplasmic/sarcoplasmic reticulum (ER/SR) are a common feature of all excitable cell types and mediate cross talk between cell surface and intracellular ion channels. Junctophilins (JPs) are important components of the junctional complexes. JPs are composed of a carboxy-terminal hydrophobic segment spanning the ER/SR membrane and a remaining cytoplasmic domain that shows specific affinity for the PM. Four JPs have been identified as tissue-specific subtypes derived from different genes: JPH1 is expressed in skeletal muscle, JPH2 is detected throughout all muscle cell types, and JPH3 and JPH4 are predominantly expressed in the brain. In the CNS, both JPH3 and JPH4 are expressed throughout neural sites and contribute to the subsurface cistern formation in neurons. Mice lacking both JPH3 and JPH4 subtypes exhibit serious symptoms such as impaired learning and memory and are accompanied by abnormal nervous functions. Synonyms: JP4, JPHL1, KIAA1831
Gene ID:	84502
UniProt:	<a href="#">Q96JJ6</a>

## Application Details

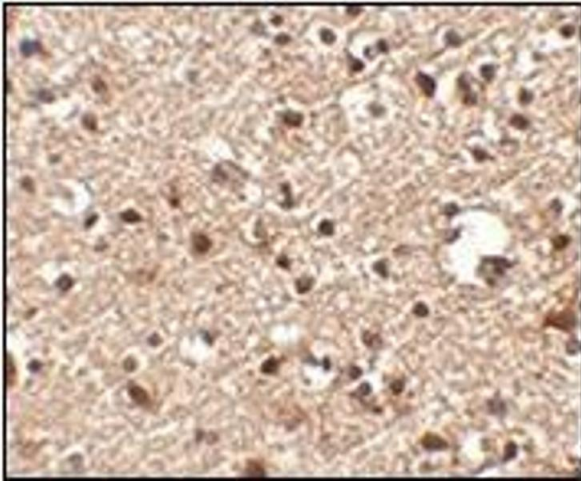
---

Application Notes:	ELISA. Western blot: 1 - 2 µg/mL. Immunohistochemistry on paraffin sections. Other applications not tested. Optimal dilutions are dependent on conditions and should be determined by the user.
Restrictions:	For Research Use only

## Handling

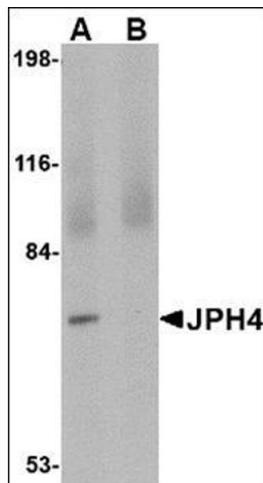
---

Buffer:	PBS containing 0.02 % sodium azide
Preservative:	Sodium azide
Precaution of Use:	This product contains sodium azide: a POISONOUS AND HAZARDOUS SUBSTANCE which should be handled by trained staff only.
Handling Advice:	Avoid repeated freezing and thawing.
Storage:	4 °C/-20 °C
Storage Comment:	Store at 2 - 8 °C for up to one month or (in aliquots) at -20 °C for longer.



### Immunohistochemistry (Paraffin-embedded Sections)

**Image 1.** Immunohistochemistry of JPH4 in human brain tissue with this product at 2.5 µg/ml.



### Western Blotting

**Image 2.** Western blot analysis of JPH4 in 293 cell lysate with this product at 1 µg/ml in (A) the absence and (B) the presence of blocking peptide.