



[Go to Product page](#)

Datasheet for ABIN500116
anti-KCTD15 antibody (C-Term)

2 Images

Overview

Quantity:	0.1 mg
Target:	KCTD15
Binding Specificity:	C-Term
Reactivity:	Human, Mouse, Rat
Host:	Rabbit
Clonality:	Polyclonal
Conjugate:	This KCTD15 antibody is un-conjugated
Application:	Western Blotting (WB), Immunohistochemistry (Paraffin-embedded Sections) (IHC (p)), Enzyme Immunoassay (EIA)

Product Details

Immunogen:	KCTD15 antibody was raised against a 16 amino acid peptide near the carboxy terminus of human KCTD15.
Isotype:	IgG
Specificity:	This antibody detects KCTD15.
Cross-Reactivity (Details):	Species reactivity (tested):Human, mouse, rat
Purification:	Peptide affinity chromatography

Target Details

Target:	KCTD15
---------	--------

Target Details

Alternative Name: [KCTD15 \(KCTD15 Products\)](#)

Background: Childhood and adult obesity in the United States and to a lesser extent the rest of the world has increased dramatically over the past decade. Both environmental and genetic factors are involved in the onset and progression of weight gain. Recently, the potassium channel KCTD15 was identified as a genetic loci associated with higher than normal body mass index (BMI) in humans along with genes such as GNPDA2, MTCH2, FTO, and TMEM18. Further studies on single nucleotide polymorphisms (SNPs) in non-diabetic and diabetic patients showed that FTO was most strongly associated with obesity while MTCH2 and GNPDA2 were still significantly associated with higher than normal BMI levels. At least two isoforms of KCTD15 are known to exist. Synonyms: BTB/POZ domain-containing protein KCTD15, KCTD-15, KCTD15

Gene ID: 79047

UniProt: [Q96S11](#)

Application Details

Application Notes: ELISA. Western blot: 0.5 - 1 µg/mL. Immunohistochemistry on paraffin sections.
Other applications not tested.
Optimal dilutions are dependent on conditions and should be determined by the user.

Restrictions: For Research Use only

Handling

Buffer: PBS containing 0.02 % sodium azide

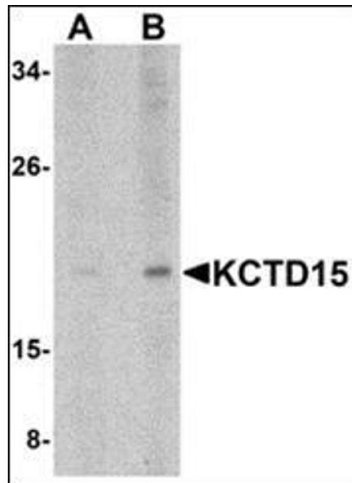
Preservative: Sodium azide

Precaution of Use: This product contains sodium azide: a POISONOUS AND HAZARDOUS SUBSTANCE which should be handled by trained staff only.

Handling Advice: Avoid repeated freezing and thawing.

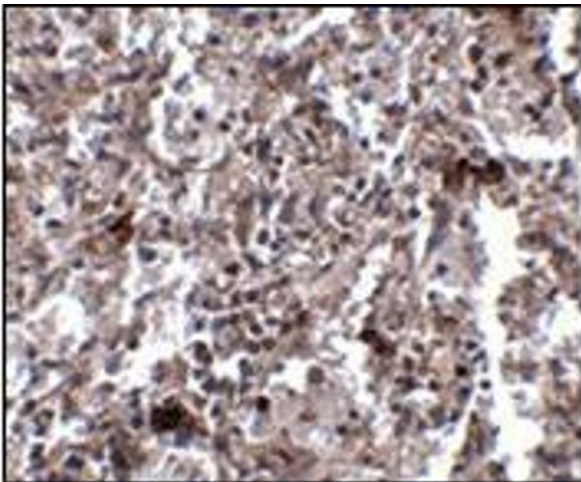
Storage: 4 °C/-20 °C

Storage Comment: Store at 2 - 8 °C for up to one month or (in aliquots) at -20 °C for longer.



Western Blotting

Image 1. Western blot analysis of KCTD15 in human spleen tissue lysate with this product at (A) 0.5 and (B) 1 µg/ml.



Immunohistochemistry (Paraffin-embedded Sections)

Image 2. Immunohistochemistry of KCTD15 in human spleen tissue with this product at 2.5 µg/ml.