

Datasheet for ABIN500118
anti-KIF5A antibody (C-Term)[Go to Product page](#)

2 Images

Overview

Quantity:	0.1 mg
Target:	KIF5A
Binding Specificity:	C-Term
Reactivity:	Human, Mouse, Rat
Host:	Rabbit
Clonality:	Polyclonal
Conjugate:	This KIF5A antibody is un-conjugated
Application:	Western Blotting (WB), Immunofluorescence (IF), Enzyme Immunoassay (EIA)

Product Details

Immunogen:	KIF5 antibody was raised against a 20 amino acid peptide from near the carboxy terminus of human KIF5.
Isotype:	IgG
Specificity:	This antibody detects KIF5A at C-term.
Cross-Reactivity (Details):	Species reactivity (tested): Human, mouse, rat
Purification:	Peptide affinity chromatography

Target Details

Target:	KIF5A
Alternative Name:	KIF5A (KIF5A Products)

Target Details

Background: The kinesin superfamily proteins (KIFs) are microtubule-dependent motors that slide along microtubules and transport cellular organelles and mRNA to different parts of the cell. In neurons, KIF5 performs this role in an anterograde fashion from the neuronal cell body to axonal or dendritic terminals. KIF5 was initially differentiated from the ubiquitously expressed kinesin as being highly enriched in subsets of neurons and selectively concentrated in the cell body. KIF5 has at least three known isoforms, this antibody recognizes all three. Mutations in one of the isoforms of KIF5 (KIF5A) are thought to be involved in hereditary spastic paraplegias. Synonyms: KIF5A, Kinesin heavy chain isoform 5A, Kinesin heavy chain neuron-specific 1, NKHC, NKHC1, Neuronal kinesin heavy chain

Gene ID: 3798

UniProt: [Q12840](#)

Application Details

Application Notes: ELISA. Western blot. Immunocytochemistry.
Other applications not tested.
Optimal dilutions are dependent on conditions and should be determined by the user.

Restrictions: For Research Use only

Handling

Buffer: PBS containing 0.02 % sodium azide

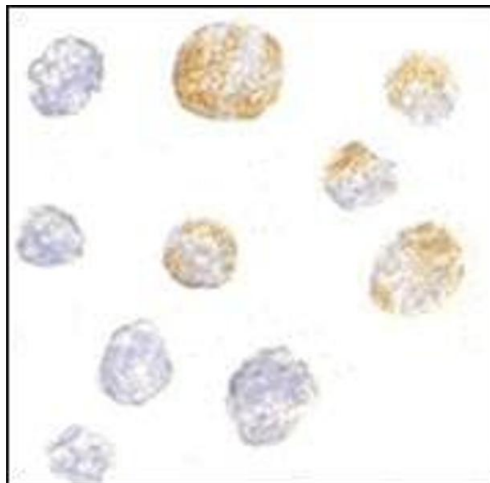
Preservative: Sodium azide

Precaution of Use: This product contains sodium azide: a POISONOUS AND HAZARDOUS SUBSTANCE which should be handled by trained staff only.

Handling Advice: Avoid repeated freezing and thawing.

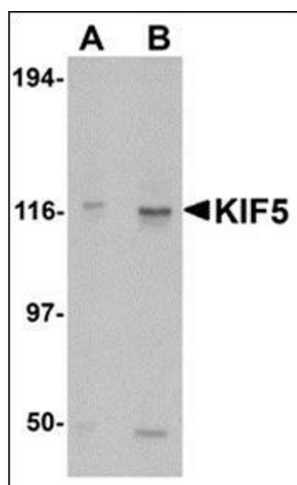
Storage: 4 °C/-20 °C

Storage Comment: Store at 2 - 8 °C for up to one month or (in aliquots) at -20 °C for longer.



Immunofluorescence

Image 1. Immunocytochemistry of KIF5 in K562 cells with this product at 5 µg/ml.



Western Blotting

Image 2. Western blot analysis of KIF5 in K562 cell lysate with this product at (A) 0.5 and (B) 1 µg/ml.