

Datasheet for ABIN500126  
**anti-KLHL1 antibody (N-Term)**

## 2 Images

[Go to Product page](#)

## Overview

Quantity:	0.1 mg
Target:	KLHL1
Binding Specificity:	N-Term
Reactivity:	Human, Rat
Host:	Rabbit
Clonality:	Polyclonal
Conjugate:	This KLHL1 antibody is un-conjugated
Application:	Western Blotting (WB), Immunohistochemistry (Paraffin-embedded Sections) (IHC (p)), Enzyme Immunoassay (EIA)

## Product Details

Immunogen:	KLHL1 antibody was raised against a 14 amino acid peptide from near the amino-terminus of human KLHL1.
Isotype:	IgG
Specificity:	This antibody detects Kelch-like 1 protein.
Cross-Reactivity (Details):	Species reactivity (tested): Human, rat
Purification:	Peptide affinity chromatography

## Target Details

Target:	KLHL1
---------	-------

## Target Details

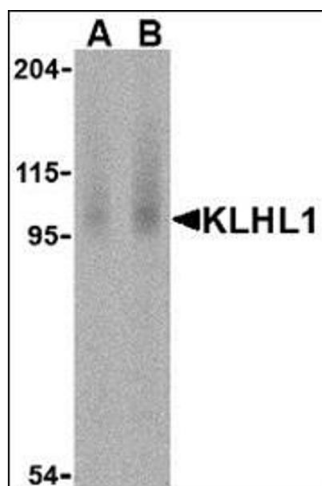
Abstract:	<a href="#">KLHL1 Products</a>
Background:	The mammalian Kelch-like 1 (KLHL1) was initially discovered as a homolog to the Drosophila Kelch gene that is highly expressed in several brain tissues (1,2). The predicted protein domain structure of KLHL1 is characteristic of a number of proteins that bind actin, form dimers, and often act as actin-organizing proteins (3). Based on the presence of anti-sense RNA that spans the transcription and translation start sites as well as the first splice site of KLHL1 in brain tissue of individuals suffering from the neurodegenerative disorder spinocerebellar ataxia type 8 (SCA8), it has been suggested that KLHL1 is involved this disease and that regulation of KLHL1 protein may be affected by antisense RNA expression (1).Synonyms: KIAA1490, KLHL1
Gene ID:	57626
UniProt:	<a href="#">Q9NR64</a>

## Application Details

Application Notes:	ELISA. Western blot: 2 - 4 µg/mL. Human brain cell lysate can be used as positive control. Immunohistochemistry on paraffin sections. Other applications not tested. Optimal dilutions are dependent on conditions and should be determined by the user.
Restrictions:	For Research Use only

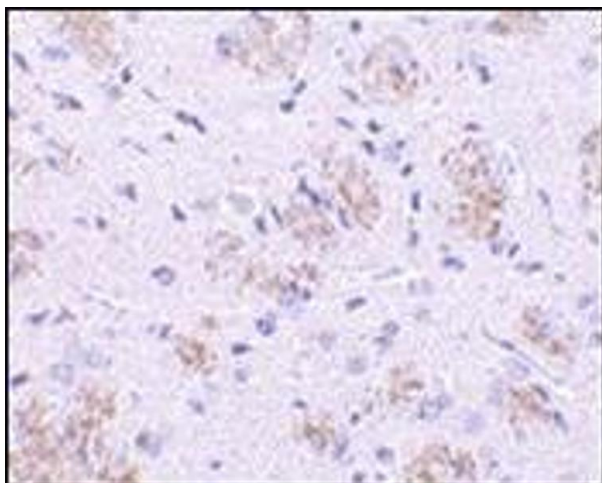
## Handling

Buffer:	PBS containing 0.02 % sodium azide
Preservative:	Sodium azide
Precaution of Use:	This product contains sodium azide: a POISONOUS AND HAZARDOUS SUBSTANCE which should be handled by trained staff only.
Handling Advice:	Avoid repeated freezing and thawing.
Storage:	4 °C/-20 °C
Storage Comment:	Store at 2 - 8 °C for up to one month or (in aliquots) at -20 °C for longer.



#### Western Blotting

**Image 1.** Western blot analysis of KLHL1 in human brain cell lysate with this product at (A) 2 and (B) 4  $\mu\text{g}/\text{ml}$ .



#### Immunohistochemistry (Paraffin-embedded Sections)

**Image 2.** Immunohistochemistry of KLHL1 in rat brain tissue with this product at 10  $\mu\text{g}/\text{ml}$ .