

Datasheet for ABIN500128
anti-KLHL15 antibody (C-Term)[Go to Product page](#)

2 Images

Overview

| | |
|----------------------|--|
| Quantity: | 0.1 mg |
| Target: | KLHL15 |
| Binding Specificity: | C-Term |
| Reactivity: | Human, Mouse, Rat |
| Host: | Rabbit |
| Clonality: | Polyclonal |
| Conjugate: | This KLHL15 antibody is un-conjugated |
| Application: | Western Blotting (WB), Immunofluorescence (IF), Enzyme Immunoassay (EIA) |

Product Details

| | |
|-----------------------------|---|
| Immunogen: | KLHL15 antibody was raised against a 15 amino acid peptide near the carboxy terminus of human KLHL15. |
| Isotype: | IgG |
| Specificity: | This antibody detects KLHL15. |
| Cross-Reactivity (Details): | Species reactivity (tested): Human, mouse, rat |
| Purification: | Peptide affinity chromatography |

Target Details

| | |
|-------------------|--|
| Target: | KLHL15 |
| Alternative Name: | KLHL15 (KLHL15 Products) |

Target Details

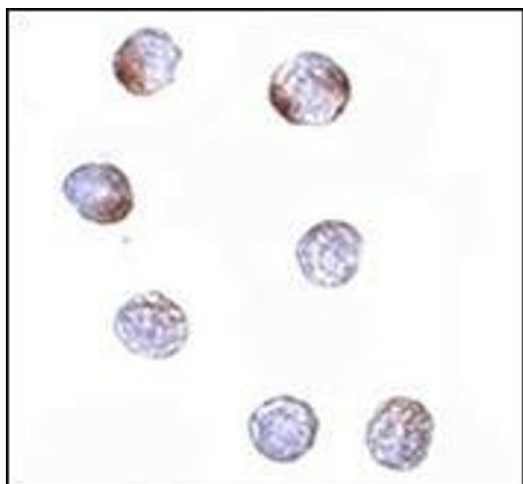
| | |
|-----------------|---|
| Background: | KLHL15 is a member of a growing superfamily of kelch repeat-containing proteins. The kelch motif was discovered in the sequence of the Drosophila kelch ORF1 protein and forms a conserved beta-propeller tertiary structure. These kelch-like proteins have been implicated in embryogenesis and carcinogenesis through cytoskeleton organization. KLHL15 mRNA is widely expressed in many tissues and is thought to be involved in protein ubiquitination and cytoskeleton organization.Synonyms: KIAA1677, Kelch-like protein 15 |
| Gene ID: | 80311 |
| NCBI Accession: | NP_085127 |
| UniProt: | Q96M94 |

Application Details

| | |
|--------------------|---|
| Application Notes: | ELISA. Western blot: 1 - 2 µg/mL. Immunocytochemistry. Other applications not tested. Optimal dilutions are dependent on conditions and should be determined by the user. |
| Restrictions: | For Research Use only |

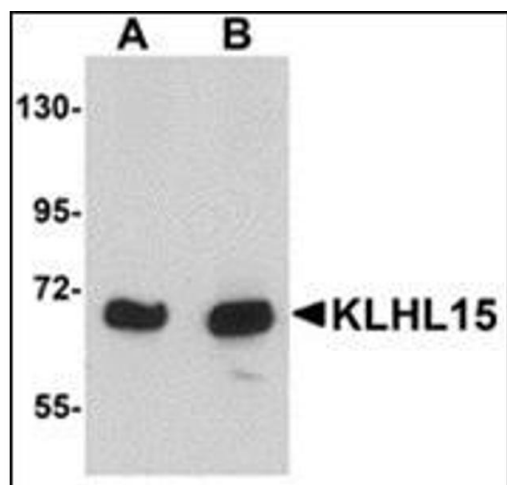
Handling

| | |
|--------------------|--|
| Buffer: | PBS containing 0.02 % sodium azide |
| Preservative: | Sodium azide |
| Precaution of Use: | This product contains sodium azide: a POISONOUS AND HAZARDOUS SUBSTANCE which should be handled by trained staff only. |
| Handling Advice: | Avoid repeated freezing and thawing. |
| Storage: | 4 °C/-20 °C |
| Storage Comment: | Store at 2 - 8 °C for up to one month or (in aliquots) at -20 °C for longer. |



Immunofluorescence

Image 1. Immunocytochemistry of KLHL15 in HeLa cells with this product at 5 µg/ml.



Western Blotting

Image 2. Western blot analysis of KLHL15 in HeLa cell lysate with this product at (A) 1 and (B) 2 µg/ml.