

Datasheet for ABIN500132  
**anti-Klra3 antibody (C-Term)**[Go to Product page](#)

## 1 Image

## Overview

Quantity:	0.1 mg
Target:	Klra3
Binding Specificity:	C-Term
Reactivity:	Mouse, Rat
Host:	Rabbit
Clonality:	Polyclonal
Conjugate:	This Klra3 antibody is un-conjugated
Application:	Western Blotting (WB), Enzyme Immunoassay (EIA)

## Product Details

Immunogen:	KLRA3 antibody was raised against a 14 amino acid peptide near the carboxy terminus of mouse KLRA3.
Isotype:	IgG
Specificity:	This antibody detects KLRA3. It may cross-react with other LY49 receptors.
Cross-Reactivity (Details):	Species reactivity (tested): Human, mouse.
Purification:	Peptide affinity chromatography

## Target Details

Target:	Klra3
Alternative Name:	KLRA3 ( <a href="#">Klra3 Products</a> )

## Target Details

**Background:** KLRA3 (also known as Ly49C) is a member of the LY49 family of receptors in Natural Killer (NK) cells that bind to major histocompatibility complex (MHC) class 1. These proteins are classified as either activating or inhibitory receptors based on whether they possess an immunoreceptor tyrosine-based inhibitory motif (ITIM) in their cytoplasmic region (for inhibitory receptors), or an immunoreceptor tyrosine-based activation motif (ITAM) that transmits activating signals resulting in phosphorylation of several substrates. KLRA3 is thought to be an inhibitory receptor, recognizing peptide-receptive H-2Kb. Synonyms: 5E6, Killer cell lectin-like receptor 3, Ly-49c, Ly49C, Lymphocyte antigen 49c, T-cell surface glycoprotein Ly-49C

**Gene ID:** 16640

**NCBI Accession:** [NP\\_034781](#)

**UniProt:** [Q64329](#)

## Application Details

**Application Notes:** ELISA. Western blot.  
Other applications not tested.  
Optimal dilutions are dependent on conditions and should be determined by the user.

**Restrictions:** For Research Use only

## Handling

**Buffer:** PBS containing 0.02 % sodium azide

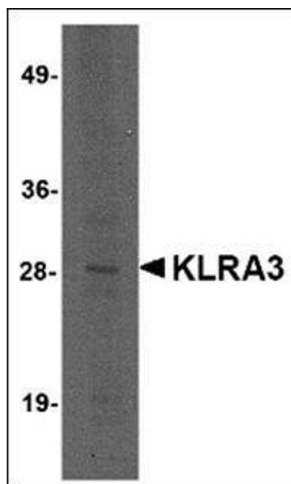
**Preservative:** Sodium azide

**Precaution of Use:** This product contains sodium azide: a POISONOUS AND HAZARDOUS SUBSTANCE which should be handled by trained staff only.

**Handling Advice:** Avoid repeated freezing and thawing.

**Storage:** 4 °C/-20 °C

**Storage Comment:** Store at 2 - 8 °C for up to one month or (in aliquots) at -20 °C for longer.



#### Western Blotting

**Image 1.** Western blot analysis of KLRA3 in mouse brain tissue lysate with this product at 2 µg/ml.