

Datasheet for ABIN500140
anti-LASS5 antibody (N-Term)[Go to Product page](#)

2 Images

Overview

Quantity:	0.1 mg
Target:	LASS5
Binding Specificity:	N-Term
Reactivity:	Human, Mouse, Rat
Host:	Rabbit
Clonality:	Polyclonal
Conjugate:	This LASS5 antibody is un-conjugated
Application:	Western Blotting (WB), Immunohistochemistry (Paraffin-embedded Sections) (IHC (p)), Enzyme Immunoassay (EIA)

Product Details

Immunogen:	LASS5 antibody was raised against a 18 amino acid peptide near the amino terminus of the human LASS5.
Isotype:	IgG
Specificity:	This antibody detects LASS5 at N-term. It may cross-react with the highly homologous LASS6.
Cross-Reactivity (Details):	Species reactivity (tested):Human, mouse, rat
Purification:	Peptide affinity chromatography

Target Details

Target:	LASS5
---------	-------

Target Details

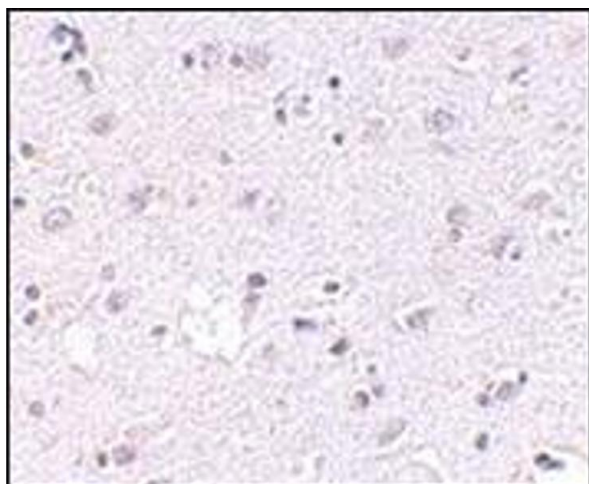
Alternative Name:	LASS5 (LASS5 Products)
Background:	<p>The LASS (longevity assurance homolog) family members represent a subgroup of the homeobox gene family and are highly conserved from yeasts to mammals. Six members of this family of proteins have been characterized (LASS1-6) and all are involved in ceramide synthesis during cell growth regulation and cancer differentiation. LASS5, also called Trh4, is a 392 amino acid endoplasmic reticulum, multi-pass membrane protein. Functioning as a dihydro-ceramide synthase, LASS5 is involved in the production of sphingolipids containing mainly one fatty acid donor (N-linked palmitoyl-ceramide) in a fumonisin B1-independent manner. It uses palmitoyl-CoA as an acyl donor and is involved in the synthesis of C14, C16 and C18-ceramide. LASS5 is the most abundantly expressed and predominant ceramide synthase isoform in lung epithelia. Recent studies show that LASS5 partially correct growth and apoptosis. Multiple isoforms of LASS5 are known to exist. Synonyms: LAG1 longevity assurance homolog 5, LASS5, TRAM homolog 4, TRH4, Translocating chain-associating membrane protein homolog 4</p>
Gene ID:	91012
NCBI Accession:	NP_671723
UniProt:	Q8N5B7

Application Details

Application Notes:	<p>ELISA. Western blot: 1 - 2 µg/mL. Immunohistochemistry on paraffin sections.</p> <p>Other applications not tested.</p> <p>Optimal dilutions are dependent on conditions and should be determined by the user.</p>
Restrictions:	For Research Use only

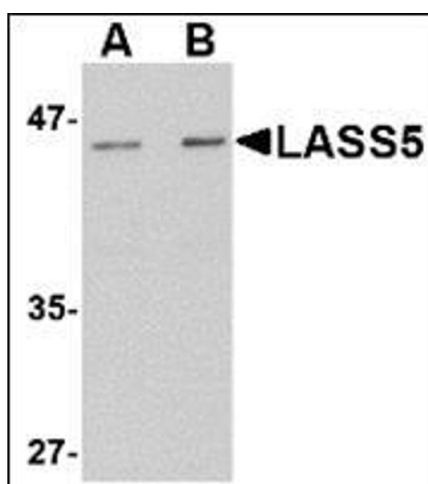
Handling

Buffer:	PBS containing 0.02 % sodium azide
Preservative:	Sodium azide
Precaution of Use:	This product contains sodium azide: a POISONOUS AND HAZARDOUS SUBSTANCE which should be handled by trained staff only.
Handling Advice:	Avoid repeated freezing and thawing.
Storage:	4 °C/-20 °C
Storage Comment:	Store at 2 - 8 °C for up to one month or (in aliquots) at -20 °C for longer.



Immunohistochemistry (Paraffin-embedded Sections)

Image 1. Immunohistochemistry of LASS5 in human brain tissue with this product at 2.5 µg/ml.



Western Blotting

Image 2. Western blot analysis of LASS5 in rat brain tissue lysate with this product at (A) 1 and (B) 2 µg/ml.