

Datasheet for ABIN500174  
**anti-SCARB2 antibody (C-Term)**[Go to Product page](#)

## 2 Images

## Overview

Quantity:	0.1 mg
Target:	SCARB2
Binding Specificity:	C-Term
Reactivity:	Human, Mouse
Host:	Rabbit
Clonality:	Polyclonal
Conjugate:	This SCARB2 antibody is un-conjugated
Application:	Western Blotting (WB), Immunohistochemistry (Paraffin-embedded Sections) (IHC (p)), Enzyme Immunoassay (EIA)

## Product Details

Immunogen:	LIMP2 antibody was raised against a 18 amino acid peptide from near the carboxy terminus of human LIMP2.
Isotype:	IgG
Specificity:	This antibody detects SCARB2 at C-term.
Cross-Reactivity (Details):	Species reactivity (tested):Human, mouse
Purification:	Peptide affinity chromatography

## Target Details

Target:	SCARB2
---------	--------

## Target Details

Alternative Name: SCARB2 ([SCARB2 Products](#))

Background: The lysosomal integral membrane protein 2 (LIMP2) is a heavily glycosylated type III transmembrane protein, the majority of which exists in the lumen of the lysosome and a cytoplasmic domain of approximately 20 amino acids. A deficiency of LIMP2 in mice causes uretic pelvic junction obstruction, deafness, and peripheral neuropathy associated with impaired vesicular trafficking and distribution of apically expressed proteins. More recently, LIMP2 was shown to act as a receptor to bind b-glucocerebrosidase, the enzyme defective in Gaucher disease, a lysosomal storage disorder. LIMP2-deficient mice showed missorted as well as secreted b-glucocerebrosidase, suggesting that LIMP2 also functions as the mannose-6-phosphate-independent trafficking receptor. Despite its predicted molecular weight, LIMP2 runs at approximately 80 - 85 kDa in SDS-PAGE. Synonyms: 85 kDa lysosomal membrane sialoglycoprotein, CD36 antigen-like 2, CD36L2, LGP85, LIMP II, LIMP2, LIMPII, Lysosome membrane protein 2, SR-BII, SRB2, Scavenger receptor class B member 2

Gene ID: 950

UniProt: [Q14108](#)

## Application Details

Application Notes: ELISA. Western blot. Immunohistochemistry on paraffin sections.  
Other applications not tested.  
Optimal dilutions are dependent on conditions and should be determined by the user.

Restrictions: For Research Use only

## Handling

Buffer: PBS containing 0.02 % sodium azide

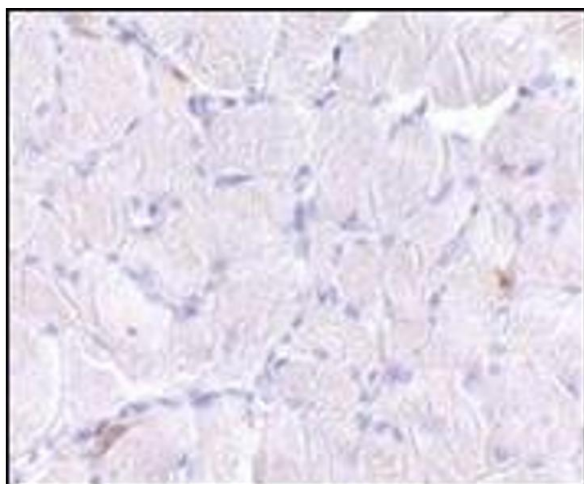
Preservative: Sodium azide

Precaution of Use: This product contains sodium azide: a POISONOUS AND HAZARDOUS SUBSTANCE which should be handled by trained staff only.

Handling Advice: Avoid repeated freezing and thawing.

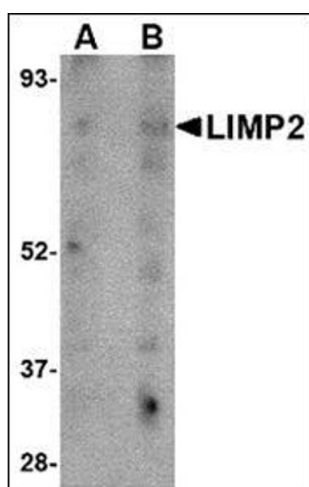
Storage: 4 °C/-20 °C

Storage Comment: Store at 2 - 8 °C for up to one month or (in aliquots) at -20 °C for longer.



#### Immunohistochemistry (Paraffin-embedded Sections)

**Image 1.** Immunohistochemistry of LIMP2 in human skeletal muscle tissue with this product at 10 µg/ml.



#### Western Blotting

**Image 2.** Western blot analysis of LIMP2 in human skeletal muscle tissue lysate with this product at (A) 1 and (B) 2 µg/ml.