

Datasheet for ABIN500262
anti-LY96 antibody (Center)

2 Images

[Go to Product page](#)

Overview

Quantity:	0.1 mg
Target:	LY96
Binding Specificity:	Center
Reactivity:	Human, Mouse, Rat
Host:	Rabbit
Clonality:	Polyclonal
Conjugate:	This LY96 antibody is un-conjugated
Application:	Western Blotting (WB), Immunohistochemistry (Paraffin-embedded Sections) (IHC (p)), Immunofluorescence (IF), Enzyme Immunoassay (EIA)

Product Details

Immunogen:	MD-2 antibody was raised against a peptide corresponding to amino acids near the middle region of human MD-2.
Isotype:	IgG
Cross-Reactivity (Details):	Species reactivity (tested): Human, mouse, rat
Purification:	Ion exchange chromatography

Target Details

Target:	LY96
Alternative Name:	MD-2 (LY96 Products)

Target Details

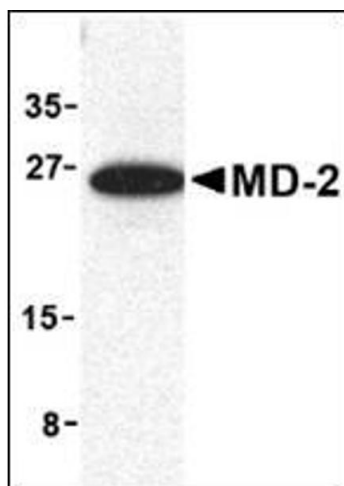
Background:	MD-2 is a member of the Toll/interleukin-1 receptor (TIR) family, a group of proteins that include the Toll-like receptors (TLRs) (1-3). TLRs are signaling molecules that recognize different pathogen-associated molecular patterns (PAMPs) and serve as an important link between the innate and adaptive immune responses (4). TLR4, the major signaling receptor for lipopolysaccharide (LPS), requires the binding of MD-2 to its extracellular region for maximal response to LPS (5,6). The specificity of this response is determined by the species of MD-2, e.g., human MD-2 can cause mouse TLR4 to react to LPS analogs that are normally antagonistic to human but not mouse TLR4 (7).Synonyms: ESOP-1, ESOP1, LY96, Lymphocyte antigen 96, MD2
NCBI Accession:	NP_056179
UniProt:	Q9Y6Y9
Pathways:	TLR Signaling , Activation of Innate immune Response , Cellular Response to Molecule of Bacterial Origin , Toll-Like Receptors Cascades

Application Details

Application Notes:	ELISA. Western blot: 0.5 to 2 µg/mL. Immunohistochemistry on paraffin sections. Other applications not tested. Optimal dilutions are dependent on conditions and should be determined by the user.
Restrictions:	For Research Use only

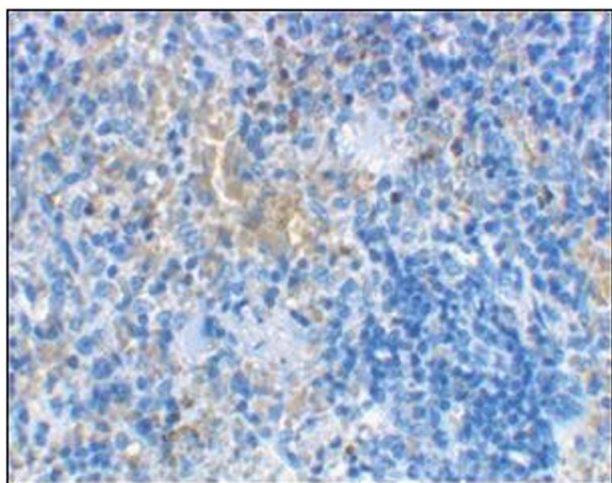
Handling

Buffer:	PBS containing 0.02 % sodium azide
Preservative:	Sodium azide
Precaution of Use:	This product contains sodium azide: a POISONOUS AND HAZARDOUS SUBSTANCE which should be handled by trained staff only.
Handling Advice:	Avoid repeated freezing and thawing.
Storage:	4 °C/-20 °C
Storage Comment:	Store at 2 - 8 °C for up to one month or (in aliquots) at -20 °C for longer.



Western Blotting

Image 1. Western blot analysis of MD-2 in mouse spleen cell lysate with this product at 1 µg/ml.



Immunohistochemistry (Paraffin-embedded Sections)

Image 2. Immunohistochemical staining of rat spleen cells using AP30552PU-N at 2 µg/ml.