

Datasheet for ABIN500272

**anti-METTL7A antibody (C-Term)**[Go to Product page](#)**1** Image

## Overview

Quantity:	0.1 mg
Target:	METTL7A
Binding Specificity:	C-Term
Reactivity:	Human, Mouse
Host:	Rabbit
Clonality:	Polyclonal
Conjugate:	This METTL7A antibody is un-conjugated
Application:	Western Blotting (WB), Enzyme Immunoassay (EIA)

## Product Details

Immunogen:	MettL7A antibody was raised against a 12 amino acid peptide near the carboxy terminus of human MettL7A.
Isotype:	IgG
Specificity:	This antibody detects METTL7A C-term. It is predicted to not cross-react with MettL7B.
Cross-Reactivity (Details):	Species reactivity (tested):Human, mouse
Purification:	Peptide affinity chromatography

## Target Details

Target:	METTL7A
Alternative Name:	METTL7A ( <a href="#">METTL7A Products</a> )

## Target Details

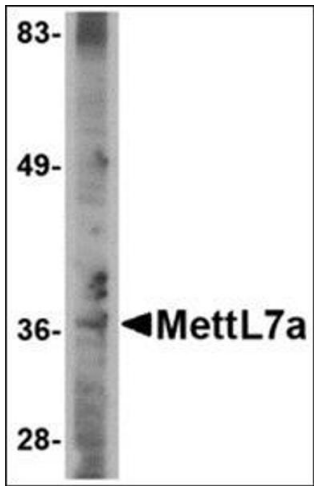
Background:	<p>MettL7A belongs to the methyltransferase superfamily. It is a probable methyltransferase.</p> <p>Methyltransferase is a type of transferase enzyme which transfers a methyl group from a donor to an acceptor. Often methylation occurs on nucleic bases in DNA or amino acids in protein structures. DNA methylation is often utilized to silence and regulate genes without changing the original DNA sequence. DNA methylation may be necessary for normal growth from embryonic stages in mammals. When mutant embryonic stem cells lacking the murine DNA methyltransferase gene were introduced to a germline of mice they caused a recessive lethal phenotype. Methylation may also be linked to cancer development as methylation of tumor suppressor genes promotes tumorigenesis and metastasis. At least two isoforms of MettL7A are known to exist.Synonyms: Methyltransferase-like protein 7A, PRO0066, UNQ1902/PRO4348</p>
Gene ID:	25840
NCBI Accession:	<a href="#">NP_054752</a>
UniProt:	<a href="#">Q9H8H3</a>

## Application Details

Application Notes:	<p>ELISA. Western blot: 2 - 4 µg/mL.</p> <p>Other applications not tested.</p> <p>Optimal dilutions are dependent on conditions and should be determined by the user.</p>
Restrictions:	For Research Use only

## Handling

Buffer:	PBS containing 0.02 % sodium azide
Preservative:	Sodium azide
Precaution of Use:	This product contains sodium azide: a POISONOUS AND HAZARDOUS SUBSTANCE which should be handled by trained staff only.
Handling Advice:	Avoid repeated freezing and thawing.
Storage:	4 °C/-20 °C
Storage Comment:	Store at 2 - 8 °C for up to one month or (in aliquots) at -20 °C for longer.



Western Blotting

**Image 1.** Western blot analysis of MettL7A in A-20 cell lysate with this product at 2 µg/ml.