

Datasheet for ABIN500276
anti-METTL7B antibody (C-Term)

2 Images

[Go to Product page](#)

Overview

Quantity:	0.1 mg
Target:	METTL7B
Binding Specificity:	C-Term
Reactivity:	Human, Mouse, Rat
Host:	Rabbit
Clonality:	Polyclonal
Conjugate:	This METTL7B antibody is un-conjugated
Application:	Western Blotting (WB), Immunohistochemistry (Paraffin-embedded Sections) (IHC (p)), Enzyme Immunoassay (EIA)

Product Details

Immunogen:	MettL7B antibody was raised against a 16 amino acid peptide near the carboxy terminus of human MettL7B.
Isotype:	IgG
Specificity:	This antibody detects METTL7B at C-term.
Cross-Reactivity (Details):	Species reactivity (tested):Human, mouse, rat
Purification:	Peptide affinity chromatography

Target Details

Target:	METTL7B
---------	---------

Target Details

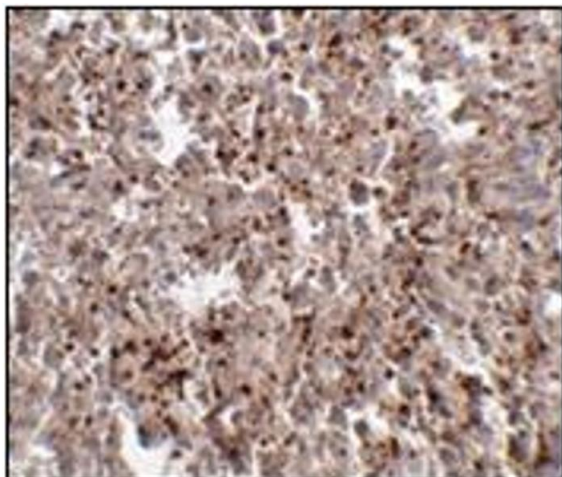
Alternative Name:	METTL7B (METTL7B Products)
Background:	<p>MettL7B belongs to the methyltransferase superfamily. It is a probable methyltransferase. Methyltransferase is a type of transferase enzyme which transfers a methyl group from a donor to an acceptor. Often methylation occurs on nucleic bases in DNA or amino acids in protein structures. DNA methylation is often utilized to silence and regulate genes without changing the original DNA sequence. DNA methylation may be necessary for normal growth from embryonic stages in mammals. When mutant embryonic stem cells lacking the murine DNA methyltransferase gene were introduced to a germline of mice they caused a recessive lethal phenotype. Methylation may also be linked to cancer development as methylation of tumor suppressor genes promotes tumorigenesis and metastasis. This MettL7B antibody is predicted to not cross-react with MettL7A. Synonyms: Methyltransferase-like protein 7B, UNQ594/PRO1180</p>
Gene ID:	196410
NCBI Accession:	NP_689850
UniProt:	Q6UX53

Application Details

Application Notes:	<p>ELISA. Western blot: 2 - 4 µg/mL. Immunohistochemistry on paraffin sections.</p> <p>Other applications not tested.</p> <p>Optimal dilutions are dependent on conditions and should be determined by the user.</p>
Restrictions:	For Research Use only

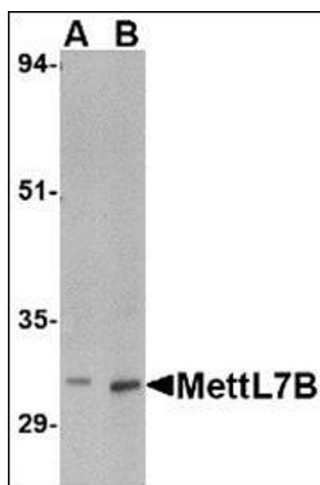
Handling

Buffer:	PBS containing 0.02 % sodium azide
Preservative:	Sodium azide
Precaution of Use:	This product contains sodium azide: a POISONOUS AND HAZARDOUS SUBSTANCE which should be handled by trained staff only.
Handling Advice:	Avoid repeated freezing and thawing.
Storage:	4 °C/-20 °C
Storage Comment:	Store at 2 - 8 °C for up to one month or (in aliquots) at -20 °C for longer.



Immunohistochemistry (Paraffin-embedded Sections)

Image 1. Immunohistochemistry of Mett7LB in human spleen tissue with this product at 2.5 µg/ml.



Western Blotting

Image 2. Western blot analysis of MettL7B in rat spleen tissue lysate with this product at (A) 2 and (B) 4 µg/ml.